

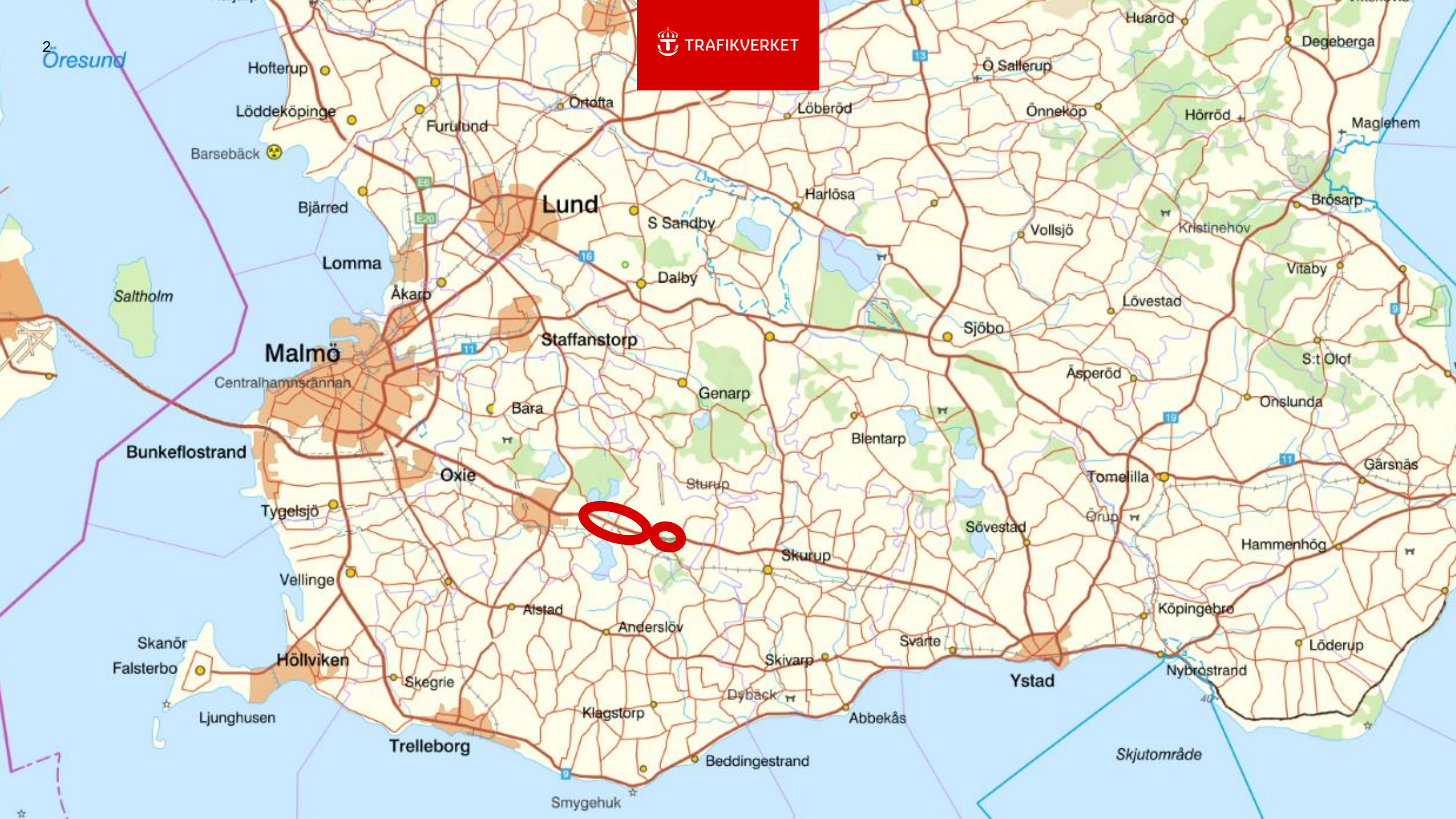
# E65 Svedala–Böringe–Lemmeströ Project





2. Öresund

TRAFIKVERKET





# Background

The E65 is an important commuter route between Ystad and Malmö and provides a connection to Malmö Airport. The road is of great regional, national and international importance, for example for heavy traffic to the port of Ystad and transit traffic to Bornholm from Copenhagen.

The road is currently a 2+1 road with a roundabout to route 813, which connects to Malmö Airport. There is currently insufficient capacity, with long traffic queues at peak travel time. The road is also prone to accidents, such as wildlife accidents, single vehicle accidents and rear-end collisions.

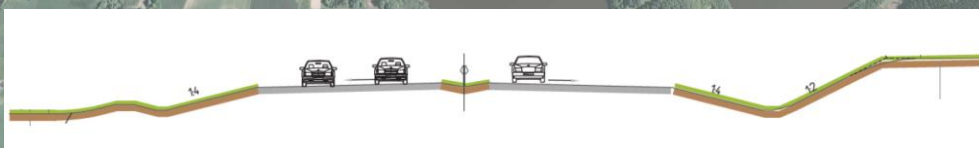
At Börringe there is poor road safety at the connections to E65. There is currently a bicycle path from the village of Börringe and eastwards which has a low standard.





# E65 Svedala–Böringe

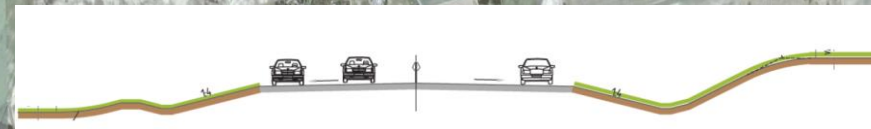
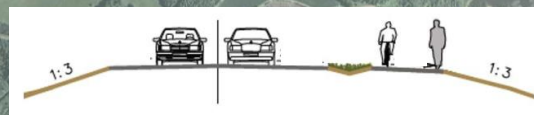
## New road construction and conversion



1,7 km widening of existing motorway, 110 km/h

2 km new motorway, 110 km/h

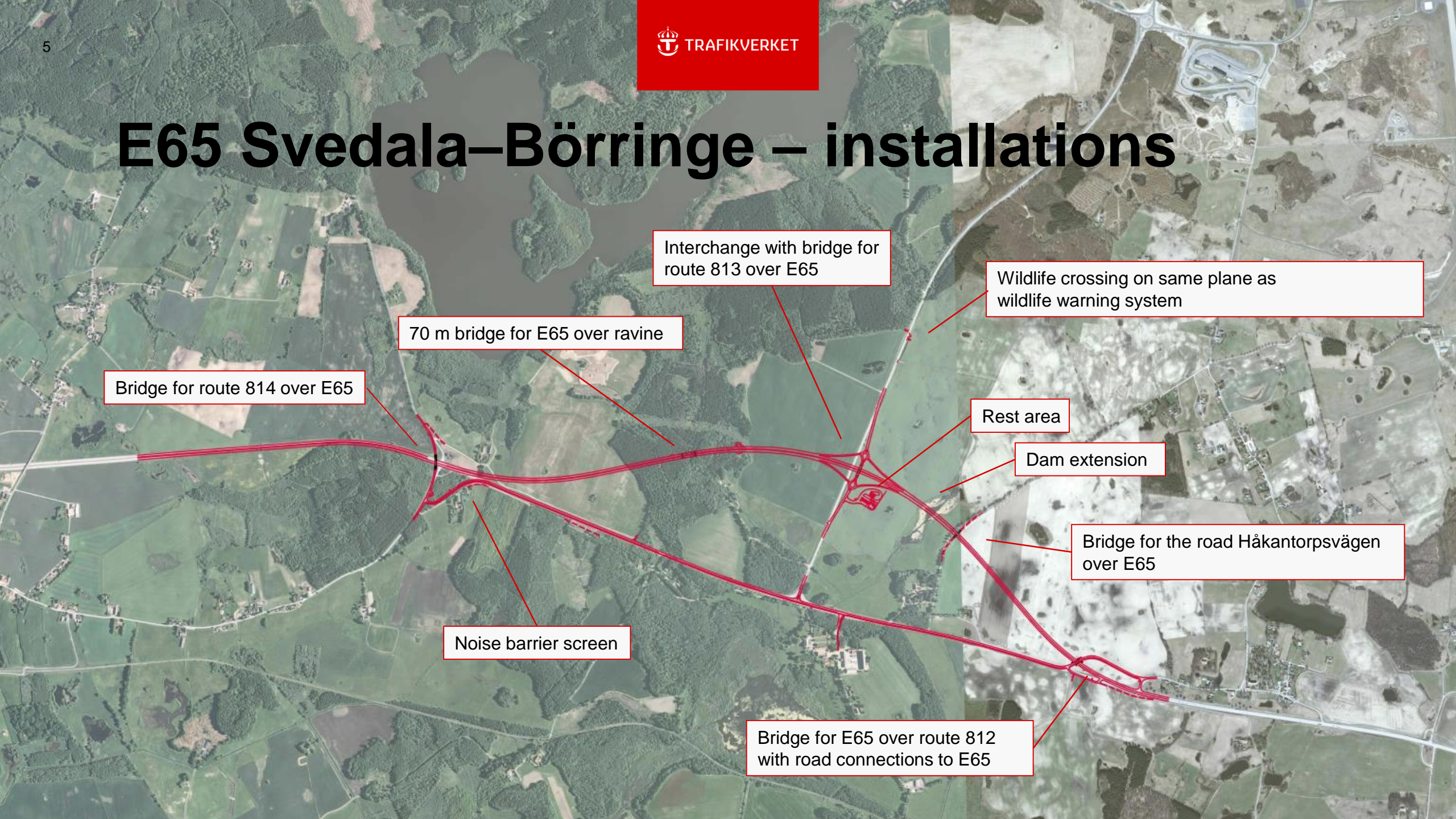
Conversion of existing E65 to 70 km/h road and a pedestrian and bicycle path



2 km new 2+2 road, 100 km/h



# E65 Svedala–Böringe – installations



Bridge for route 814 over E65

70 m bridge for E65 over ravine

Interchange with bridge for  
route 813 over E65

Wildlife crossing on same plane as  
wildlife warning system

Rest area

Dam extension

Bridge for the road Håkantorpsvägen  
over E65

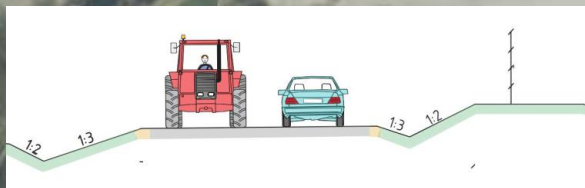
Noise barrier screen

Bridge for E65 over route 812  
with road connections to E65



# E65 Börringe–Lemmeströ

New road parallel to E65



Bridge over E65 with road connection to Slätterödsvägen and Havgårdsvägen

# Nature and wildlife – measures

The road will be built with the protection and safeguarding of wildlife in mind and road users will be protected from wildlife accidents. A number of measures and adaptations will be implemented, such as:

*Fauna fencing:* which is fencing that is installed deep into the ground so that rooting animals cannot get through and high enough to keep animals such as the red deer in the area from jumping over it.

*Wildlife jump-outs:* which is a built-in place in the fauna fencing where wildlife can get out if they have somehow gotten into the road area.

*Wildlife crossing:* on route 813, a crossing for wildlife will be constructed on the same plane as a wildlife warning system, which has sensors that will detect wildlife and illuminate warning lamps along the road.

*Fauna passage:* the road will be constructed over a ravine with a 70 m long bridge, where a lot of wildlife can and should be able to move about. The bridge and work on it shall be adapted to meet the best interests of the wildlife that moves about in the area.

The area is a home for frogs, which are protected species. Work affecting the frogs needs to be carried out between October and February. For the frogs, a barrier and a drum to control their migration path shall be constructed.





# New road

The project involves building a new road, both widen the existing road and build a new section on undeveloped land.

- 1,7 km widening the existing road, which is currently 2+1 lanes and has a speed limit of 100 km/h, to a motorway with a speed limit of 110 km/h.
- 2 km new motorway, built mostly on arable land
- 1,7 km new road 2+2 lanes, built mostly on arable land.
- 2 km smaller road which will run parallel to the existing E65.
- 3,5 km narrowing the existing road to a public regular road with speed limit of 70 km/h and a bicycle path parallel to the road.





# Bridges

Several bridges will be built as part of the project:

- One interchange with bridge for route 813 over E65.
- One bridge in a nature area which will be 70 m long, over a ravine.
- Two bridges crossing over E65, route 814 and Håkantorpsvägen.
- Two bridges with connection to surrounding roads.





# Rest area

A rest area shall be constructed at the interchange. The design of this will be developed through an architectural competition.

