



SAFER STAGE 6

A collaborative platform for research and knowledge exchange

SAFER

ROAD TRAFFIC INJURIES

nearly

1.3 million
DEATHS

& as many as

50 million
INJURIES
each year



ROAD TRAFFIC INJURIES

**LEADING
CAUSE OF DEATH**

for

**children
& youth**

aged 5-29 years



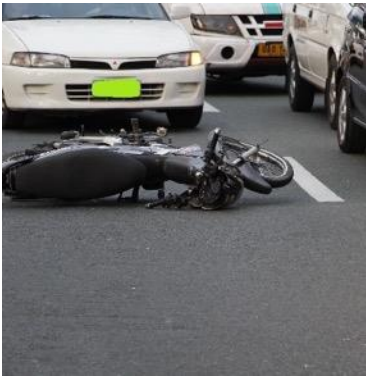
THE TRANSPORT SYSTEM WE WANT TO CONTRIBUTE TO IS

- Safe and trustworthy
- Climate neutral
- User focussed, inclusive and accessible to *all*



CHALLENGES WE NEED TO ADDRESS

In different ways, and where we can contribute in a proper way



1.3 million
people killed and
many more
injured



Large differences
globally and lack
of equity



Risky behaviour
and gaps in
traffic safety
knowledge



A rapidly
changing road
mobility
landscape



Keep road safety
on the political
agenda



WHERE DO WE COME FROM?



SAFER is part of a bigger societal project: the design and realisation of smart, sustainable transport systems in the cities and beyond.

THIS IS SAFER – KEY FACTS

- A world leading **competence centre and knowledge hub** for vehicle and traffic safety.
- Performs **collaborative excellent multi-stakeholder research** with close to 50 partners from the industry, academia and society.
- Contribute to the creation of a **safe, sustainable transport system**.
- A **research platform** where partners can meet, build and share research and knowledge.
- Gives access to the **unique traffic safety research competence** within the SAFER network.
- **Creates knowledge and value** beyond what a single partner can achieve on its own.
- 17 years of successful research:
 - More than 400 fulfilled projects
 - Close to 1200 publications
 - About 575 active researchers



WHERE DO WE GO?

SAFER's Vision and Mission



Our Vision:
A road transport
system safe for *all*.



Our Mission

We are bringing people together,
conducting research and leveraging
knowledge to enable safe sustainable
mobility.



OUR RESEARCH SCOPE

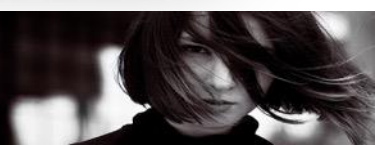
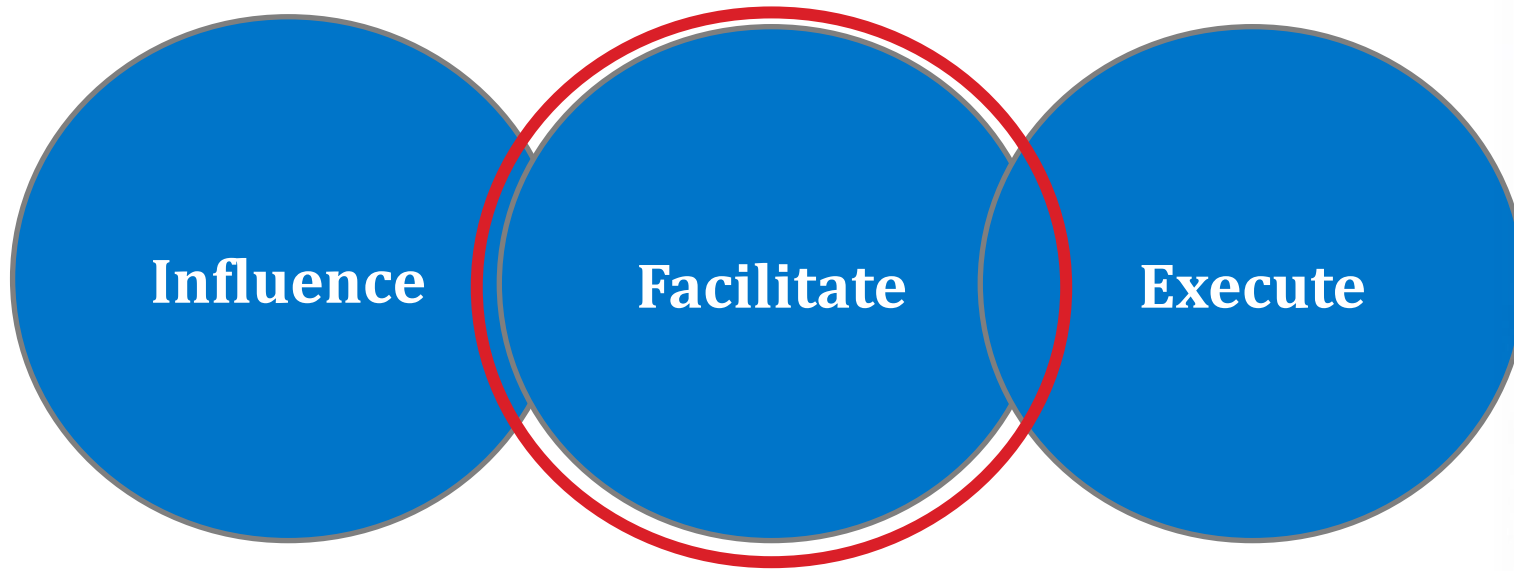
SAFER's research has a *human centric approach* and includes *road traffic*, for example, pedestrians, cyclists, various vehicles and goods services.

We cover a "complete-travel-perspective", *from door to door*, in which a *human is interacting with a vehicle in the road traffic environment*.



OUR STRATEGY

To support our vision to save lives in traffic





OUR
COLLABORATIVE
RESEARCH
AGENDA



SAFER

THE SAFE SYSTEM
PRINCIPLE APPROACH

SAFE INFRASTRUCTURE

Infrastructure providing conditions needed to travel at maximum speed limit, e.g. guard rails and separation from other road users

SAFE VEHICLES
AND SAFE SPEEDS

Complying with speed limits, use of preventative safety systems and adaptive crashworthiness for occupants and road users

SAFE ROAD USERS

Human tolerance to blunt force

SAFE SYSTEM PRINCIPLES AT SAFER

At SAFER, we have a dedicated research team, led by the Swedish Transport Administration, focusing on the specific research questions:

- What does a **transportation system** that anticipates and accommodates human errors and prevents fatalities or serious injuries look like?
- How do we **design vehicles and infrastructures** that are within human tolerance, that accommodate the **behaviour** of humans and organisations?



OUR IMPACT AREAS

Where SAFER has and will have a very strong position



Human body
and mind

Safety
performance
evaluation

Safety
principles of
products,
services and
infrastructure



SAFER IN THE SWEDISH ECO SYSTEM



SAFER'S INTERNATIONAL ENGAGEMENT

What we want to achieve through international contacts:

- Learn from the best
- Leverage international public funding
- Project brokerage
- Influencing the upcoming programmes
- Influence future standardization, where suitable
- Support our partners' international business development
- Share the Swedish way of cooperation, where suitable



WHAT WE DO TOGETHER

to support our vision to save lives in traffic



**HOST THE
PROJECT
PORTFOLIO**

**CONTRIBUTE IN
PARTNERSHIP
ACTIVITIES**





HOST THE
PROJECT
PORTFOLIO

THE SAFER PROJECT PORTFOLIO

The key to research excellence and successful dissemination

- More than **400 projects** from the start in 2006
- Around **50** ongoing projects
- About **575** engaged researchers
- Close to **1200 publications**

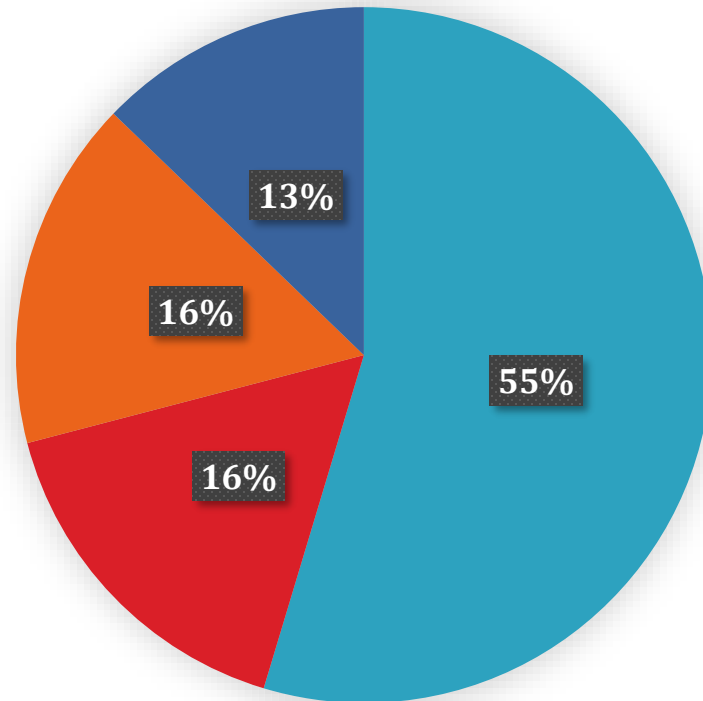


HOST THE
PROJECT
PORTFOLIO

FUNDING SOURCES

for our project portfolio!

Projects



- **FFI/VINNOVA**
- **EU**
- **SAFER Pre-Study Funding**
- **Other:**
 - Chalmers AOA Transport
 - Consortium financed
 - Energimyndigheten
 - KK-Stiftelsen
 - Norwegian Public Roads Administration
 - SAFER Core
 - Skyltfonden
 - Swedish Transport Administration
 - The Knowledge Foundation
 - Open Research at AstaZero Program

*In 2022, the project value sums up to **1848** MSEK for all project partners and **558** MSEK for the Swedish partners.*

Project portfolio May 2023



SAFER's IDEA EXPLORATION PROGRAM

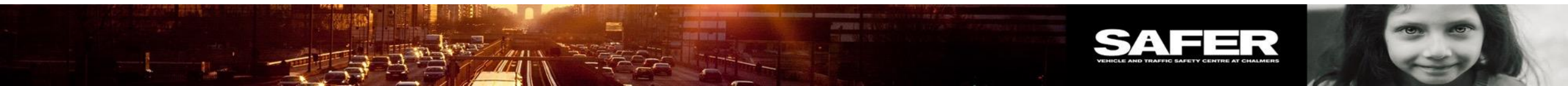
PURPOSE

Pre-studies on emerging or entirely new topics and strategic areas are needed to develop SAFER according to partner needs. Funding will proactively stimulate **project generation** to maximize the benefits of our multi-disciplinary platform and obtain a broad commitment, both between partners and within research areas.

The funding is for getting started with **strategic knowledge creation** that can be leveraged e.g., by using **the unique, new competence as a basis for national funding or an entry ticket to prestigious international collaborations.**

We also welcome proposals that are of a different nature, for instance for finalization of publications from a completed project or investigation of a new area.

Simply put, projects that lead SAFER forward and contribute to the continued **development of our joint collaboration platform.**



CONTRIBUTE
IN
PARTNERSHIP
ACTIVITIES

PARTNERSHIP ACTIVITIES

Along with the project portfolio, SAFER carries out a number of other partnership collaboration activities.

Catalyst for project
creation and
consortia
building

Create and
utilize funding
opportunities

Knowledge
dissemination

Connected
Research
Resources

Building and
utilising a value-
enhancing
ecosystem

Networking &
community
building

Contributing to
the global
research
agenda

Global
awareness

International
engagement



CONNECTED RESEARCH RESOURCES UNDER THE SAFER UMBRELLA

As a SAFER partner you get, through projects, access to SAFER's connected research resources. Also, expertise to use these is available within the community. Hence, easier, better and more efficient research!

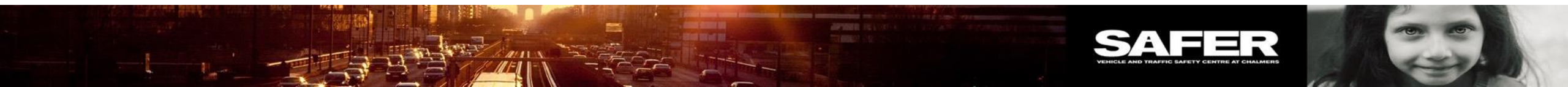
- SAFER open innovation arena and office environment (SAFER)
- SAFER Naturalistic Driving Data Platform (SAFER)
- Revere research lab for active safety and autonomous driving (Chalmers)
- AstaZero real-world proving ground (RISE)
- Driving simulators (e.g. VTI's SIM IV)
- SAFER's Human Body model
- Stora Holm Test Track
- The SAFER Data catalogue



CURRENT PARTNERS

- Agreat
- Afry
- Aptiv
- AstaZero
- ASTUS AB
- Asymptotic
- Autoliv Development
- BETA CAE
- Bookman Urban Visibility
- City of Gothenburg
- Consenz
- Cycleurope
- CEVT
- Chalmers Industriteknik
- Chalmers University of Technology
- Combitech
- DuWill AB
- Einride
- Folksam
- Halmstad University
- Hövding
- If Insurance
- Institute of Transport Economics (TØI)
- Jönköping University
- Knightec
- Malmeken AB
- NTF Väst
- NEVS
- Pionate AB
- QRTECH
- Qualcomm (prev Arriver)
- RISE
- Scania
- Smart Eye
- Svanberg & Svanberg AB
- Swedish National Road and Transport Research Institute (VTI)
- Swedish Transport Administration
- Swedish Transport Agency
- Trivector
- University of Borås
- University of Gothenburg
- University of Lund
- University of Skövde
- Veoneer (will become Magna Sweden)
- Viscando
- Voi
- Volvo Car Corporation
- Volvo Group
- Zenseact

Ongoing dialogue with about 10 additional potential partners



World-leading hub for knowledge development in traffic safety

Meet, learn, develop, contribute!

- Be part of the bigger purpose of **saving lives, reducing injuries** and creating a sustainable transport system.
- **Diversity** across research disciplines is a source for **creativity and innovation**.
- **Knowledge catalyst!**
 - Get access to a collaborative multi-stakeholder research portfolio.
 - Participate in project creation activities and get support with applications.
 - Find funding opportunities and support
 - SAFER affiliation increases credibility and we have a strong track record in research proposal hit rates.
- **Knowledge dissemination and utilisation**
 - Get inspiration and knowledge through SAFER seminars and conferences.
 - Strengthened competitiveness
- **Influence!**
 - Clear possibility to influence on the national and international arena, e.g. calls, policy, legislation.
- **Research resources**
 - Simplified access to relevant connected research resources.
- Access to a broader **ecosystem**.





Let's save
lives
together!