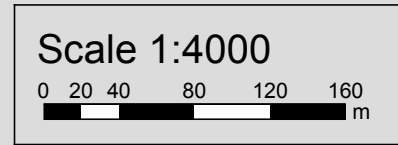
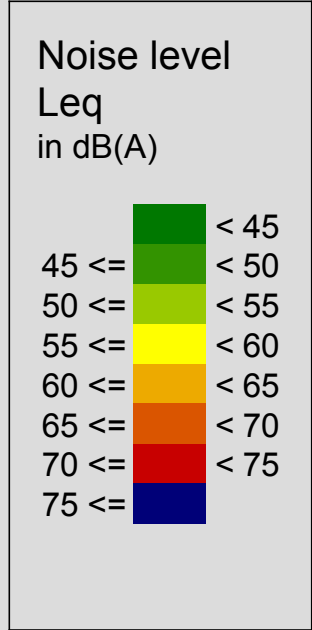
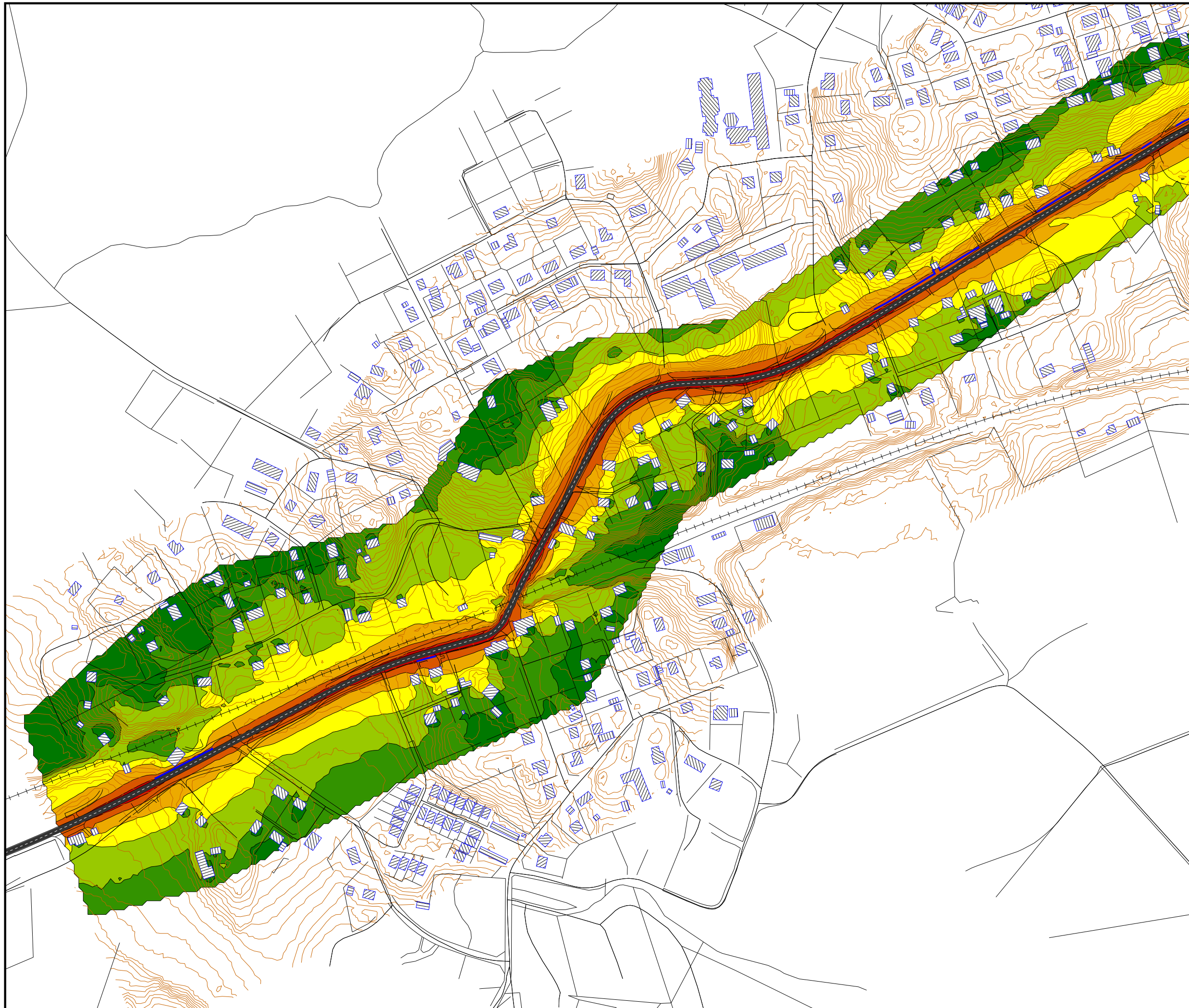


Vägplan Väg 57 Gnesta  
Sträckan genom Mönbo, del 1  
2030  
Ekvivalenta ljudnivåer i dB(A)

Med befintliga skärmar  
Run name:  
Mönbo\_ekv\_2030\_20130207\_7  
Delsträcka km 5/000 - 6/500





Vägplan Väg 57 Gnesta

Sträckan genom Mönbo, del 2

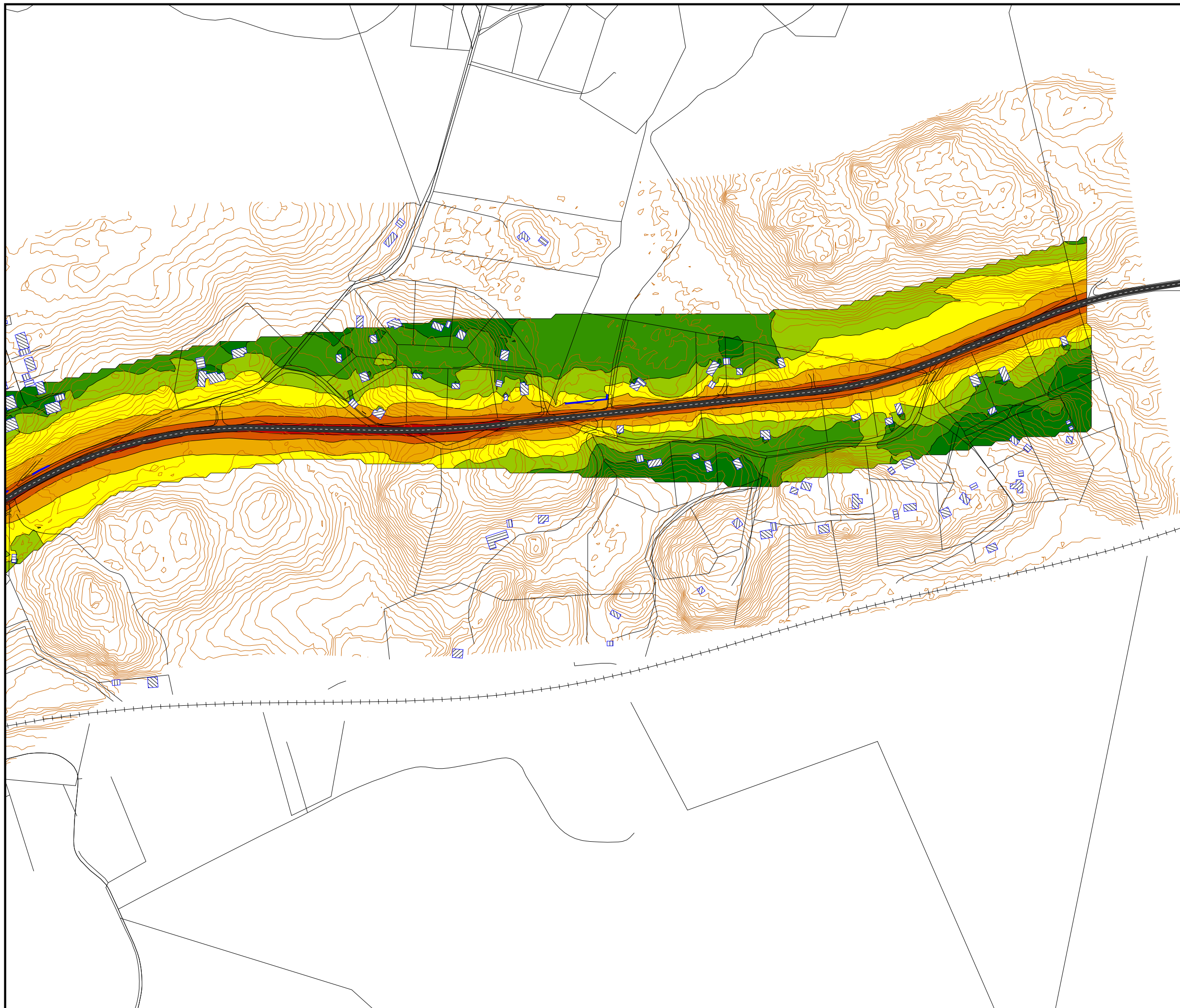
2030

Ekvivalenta ljudnivåer i dB(A)

Med befintliga skärmar

Run name:  
Mönbo\_ekv\_2030\_20130207\_7

Delsträcka 6/500 - 7/700

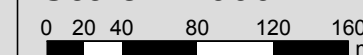


Noise level  
Leq  
in dB(A)

< 45	Green
45 <=	Light Green
50 <=	Yellow-Green
55 <=	Yellow
60 <=	Orange
65 <=	Red-Orange
70 <=	Red
75 <=	Dark Blue



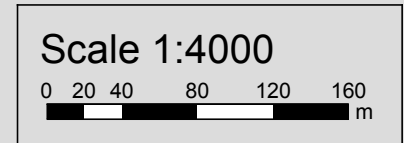
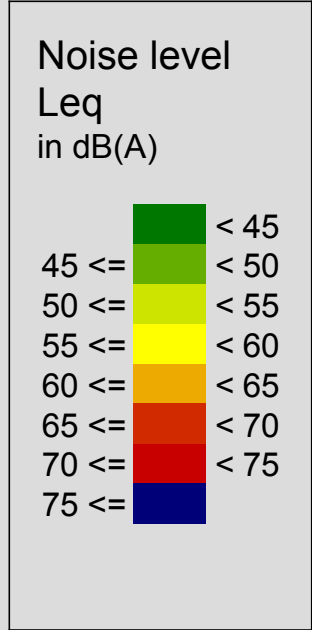
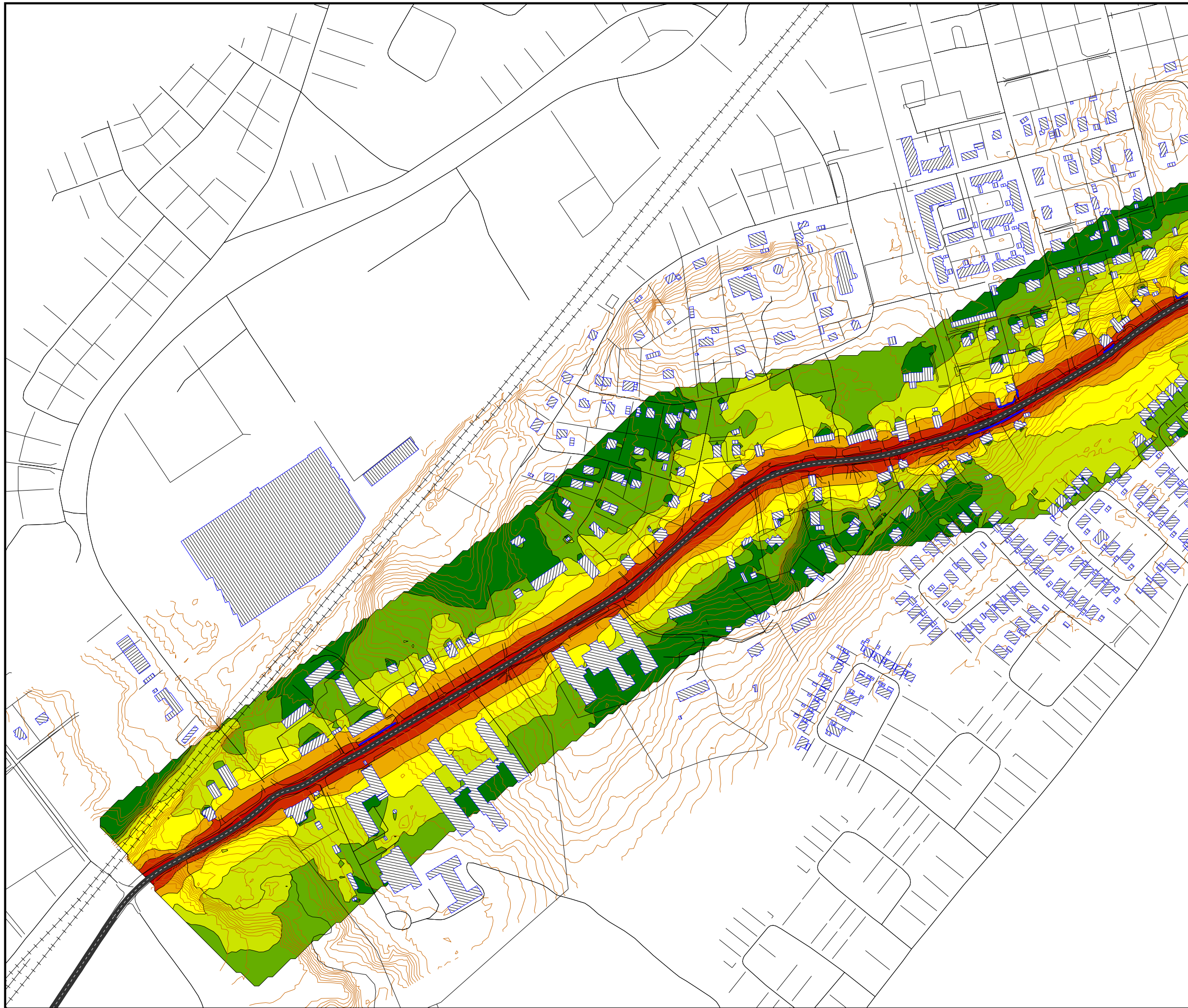
Scale 1:4000





Vägplan Väg 57 Gnesta  
Sträckan genom Järna, del 1  
2030  
Ekvivalenta ljudnivåer i dB(A)

Med befintliga skärmar  
Run name:  
Jarna\_ekv\_2030\_20130207\_11  
Delsträcka 14/600 - 15/900





Vägplan Väg 57 Gnesta

Sträckan genom Järna, del 2

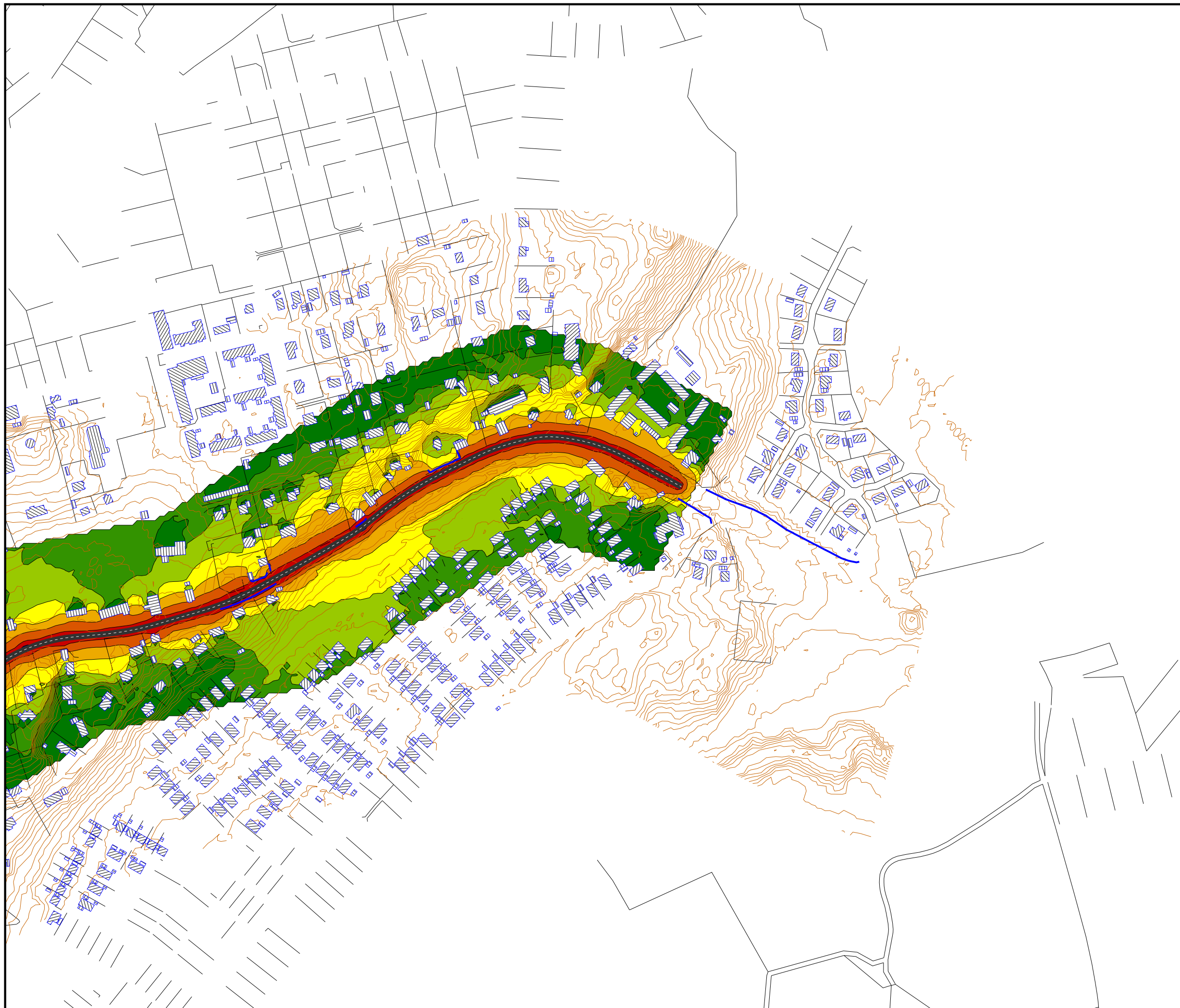
2030

Ekvivalenta ljudnivåer i dB(A)

Med befintliga skärmar

Run name:  
Jarna\_ekv\_2030\_20130207\_11

Delsträcka 15/400 - 16/200



Noise level  
Leq  
in dB(A)

< 45	Green
45 <=	Light Green
50 <=	Yellow-Green
55 <=	Yellow
60 <=	Orange
65 <=	Red-Orange
70 <=	Red
75 <=	Blue



Scale 1:4000

