

# Custom infrastructure in larger cities

Webinar 2019-10-15



**TRAFIKVERKET**

# What do we mean by customised infrastructure?

Making exceptions from the traditional road design practices to facilitate transport efficiency in a larger area, by enabling transport efficient urban planning.

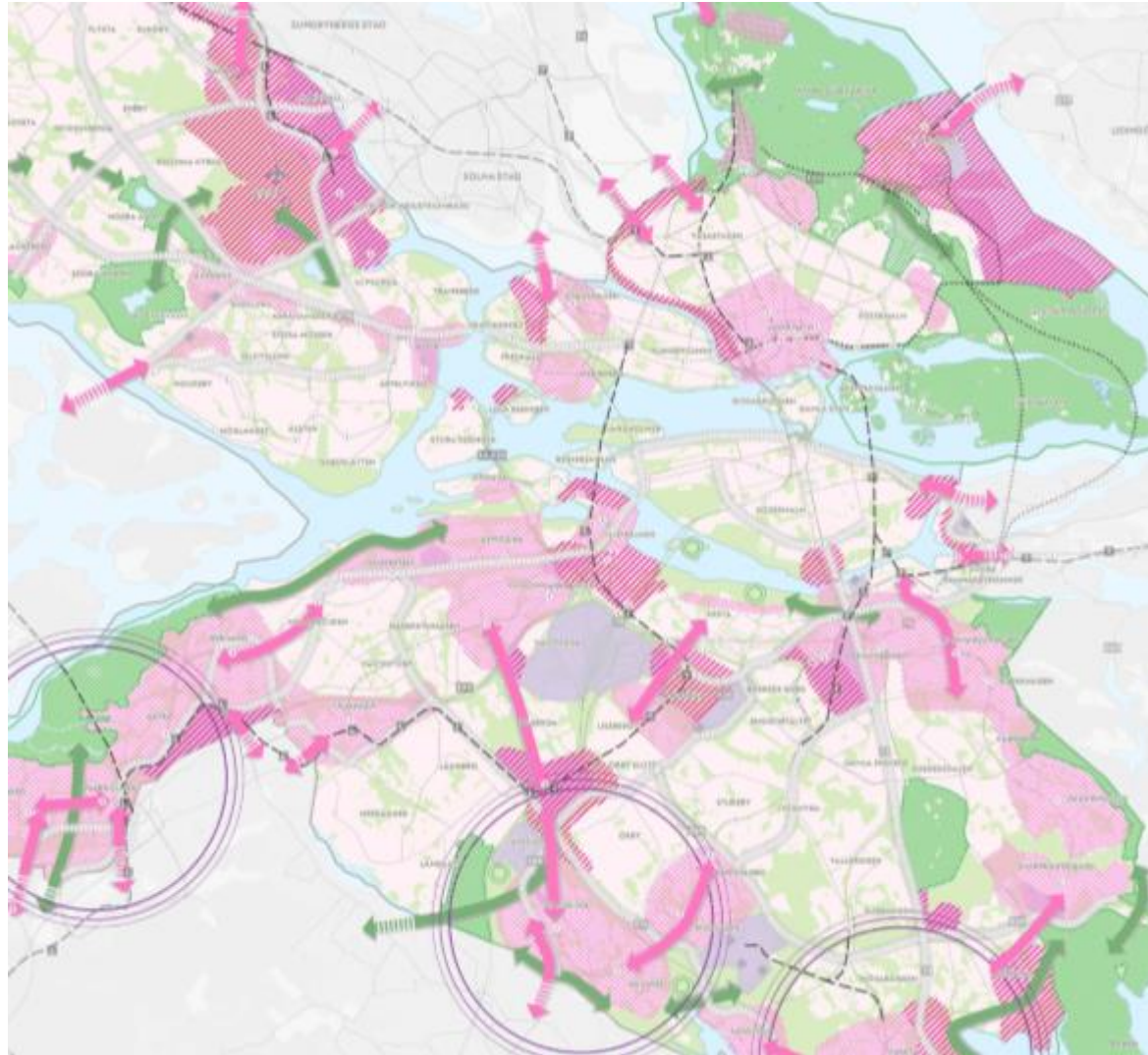
# Custom infrastructure guidelines project

- There is a lot of pressure on the Swedish Transport Administration from the municipalities.
- The Swedish Transport Administration in Stockholm: Not possible to significantly reduce traffic congestion by building more roads. Instead, we need to make the best of the current road system (and optimise other transport modes).
- A project was initiated.

## 73 roads with national interest



## Master plan – grey = "urban roads"



- The aim was to create guidelines for:
  - Which roads needs to be separated to secure high capacity and resilience in rush hour.
  - Which roads can be customised to allow for a more transport efficient transport system overall.

# Background documentation

## Transport system

- Which *functions* must the road section provide.
  - Long-distance transports/commuting?
  - Transports of dangerous goods?
  - Connections to important ports and terminals etc.?

## Urban development

- Strategic city plans
  - Clear land use planning
  - Strategic mobility planning
  - A regional outlook

# Choose direction in two steps (step 1)

Road administration should set rough boundaries for what can be allowed from a national standpoint.

- Passability and accessibility must be secured for the largest roads.
- More detailed system analysis for complex networks.
- Transit-oriented development should lead to higher transport efficiency



# Choose direction in two steps (step 2)

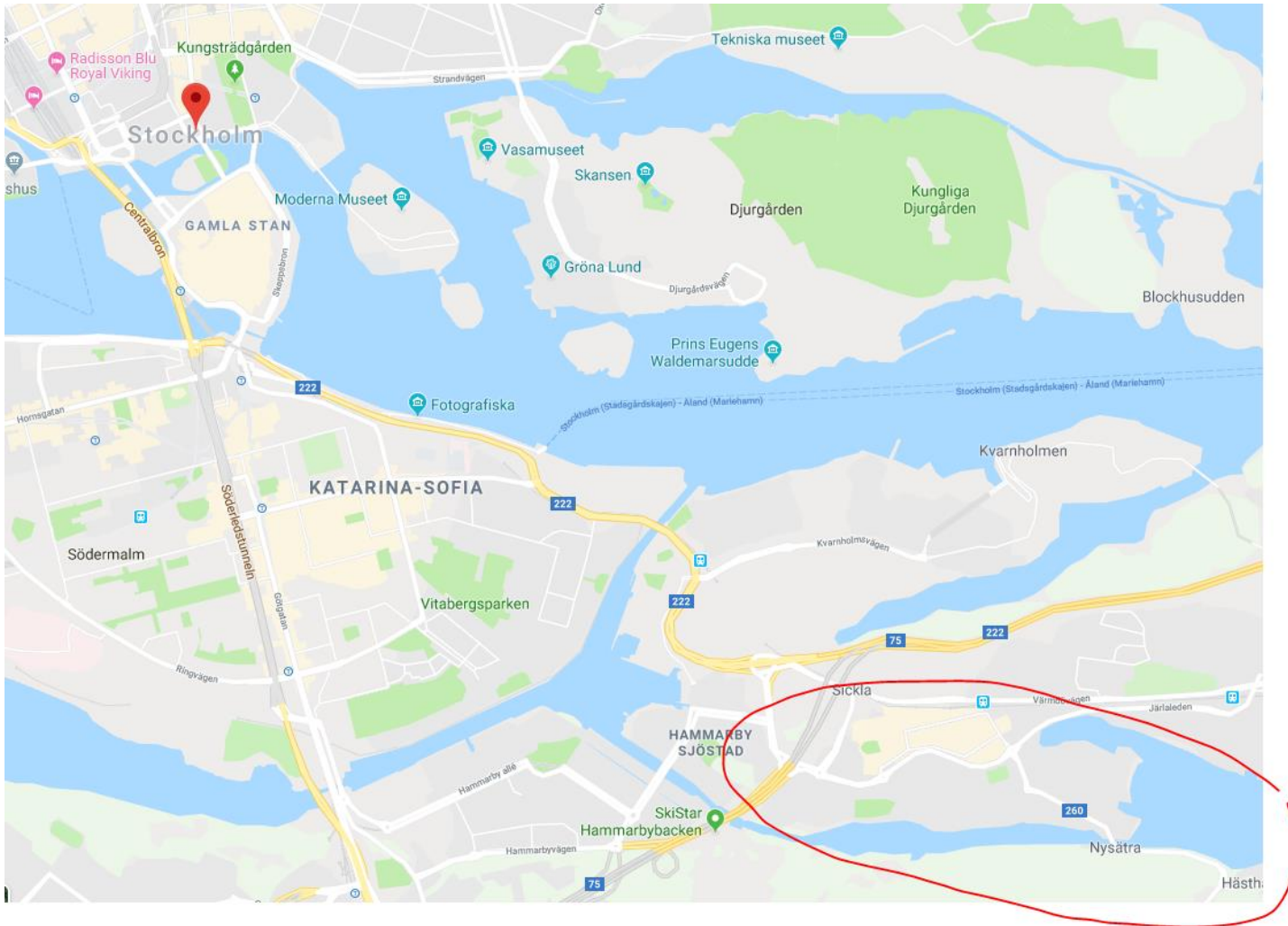
## Local impacts

- Health impacts (road noise and air quality)
- Social sustainability
- Potential for new housing
- Etc.

When these two steps of analysis have been carried out, a basic direction can be decided on.

Costs and benefits needs to be calculated throughout the process.

# Example: Road 260 Sickla



# Example: Sickla



# Concluding remarks

- Early cooperation is needed
- It is not possible to make decisions without proper background material
- Possibilities for positive effects on both local and national level