

Dialogue with the market

Locks in Trollhätte canal, March 2024



Agenda of the meeting

- Introduction and presentation
- Purpose with the dialogue
- Presentation of the projects
- Presentation of the contractor
- Information and dialogue
- General questions
- Conclusions



Purpose with the dialogue

The purpose with the dialogue is to:

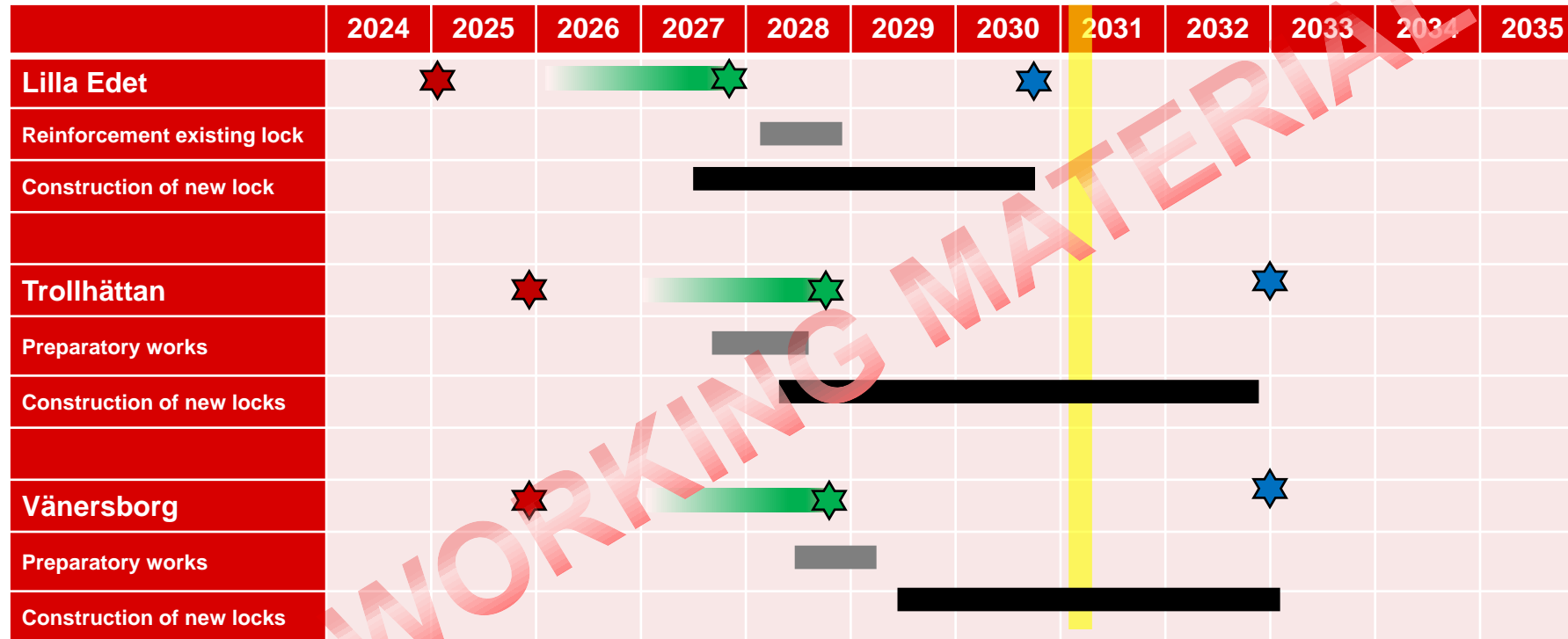
- Inform about the projects and the upcoming procurements
- Take part of the suppliers' experiences in order to form the upcoming contracts and procurements in the best possible way
- Receive valuable input to our orientation proposal and the upcoming decisions to be made by the board of the Swedish Transport Administration

The aim of the meeting is furthermore to gain a constructive dialogue between the parties, which means that:

- The presented information can be changed in a later stage. Any offers should be based on the published tender documents
- The Swedish Transport Administration will take part of and consider the contractor's ideas, but it's not guaranteed that they will be implemented in the upcoming procurements



Master time plan



Lilla Edet

Earthworks and reinforcement

- Soil removal and reinforcement by lime cement columns
- Start of construction 2027
- SEK 400—500 million

Lock and fairway

- Construction of lock including chamber, gates, jetty guides, dredging, temporary structures etc.
- Start of construction 2027
- SEK >1 000 million

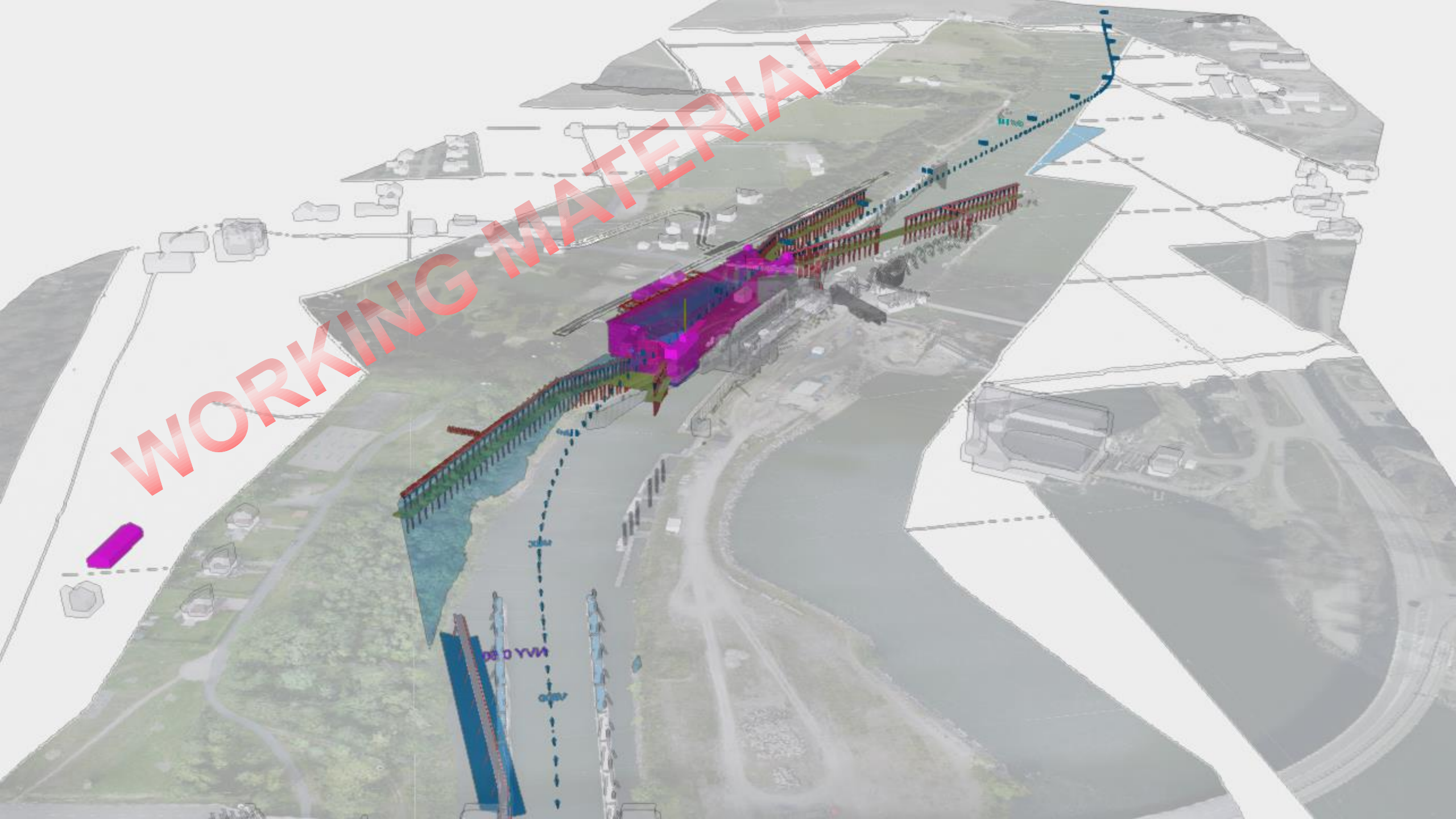
Sport field

- Soccer field, club house, stands, lighting etc.
- Start of construction 2026
- SEK 30 million

Securing existing lock

- Start of construction 2032
- SEK 40 million

WORKING MATERIAL



ARBETSMATERIAL



ARBETSMATERIAL

Lilla Edet

Slope

Excavation	270 000	m ³
Lime cement columns	150 000	m
Cable rerouting	1 500	m

Lock

RD piles	9 000	m ²	
Excavation within sheet piles	120 000	m ³	(which of 25 000 m ³ rocks)
Concrete	50 000	m ³	
Steel	300	ton	(which of approx 50 ton stainless)
Steering system			
Jetty guides	650	m	

Dredging

Clay	81 000	m ³
Moraine	66 000	m ³



Trollhättan

Lock and fairway

- Construction of lock including chamber, gates, jetty guides, dredging, temporary structures etc.
- Start of construction 2029
- SEK 2 100 million

Rock excavation, fairway

- Rock excavation
- Start of construction 2028
- SEK 400 million

Securing existing lock

- Start of construction 2032
- SEK 70 million

Widening of existing (rock) channel

- Rock excavation (limited working periods due to ongoing maritime traffic), jetty guides including installations
- Start of construction 2028
- SEK 50 million

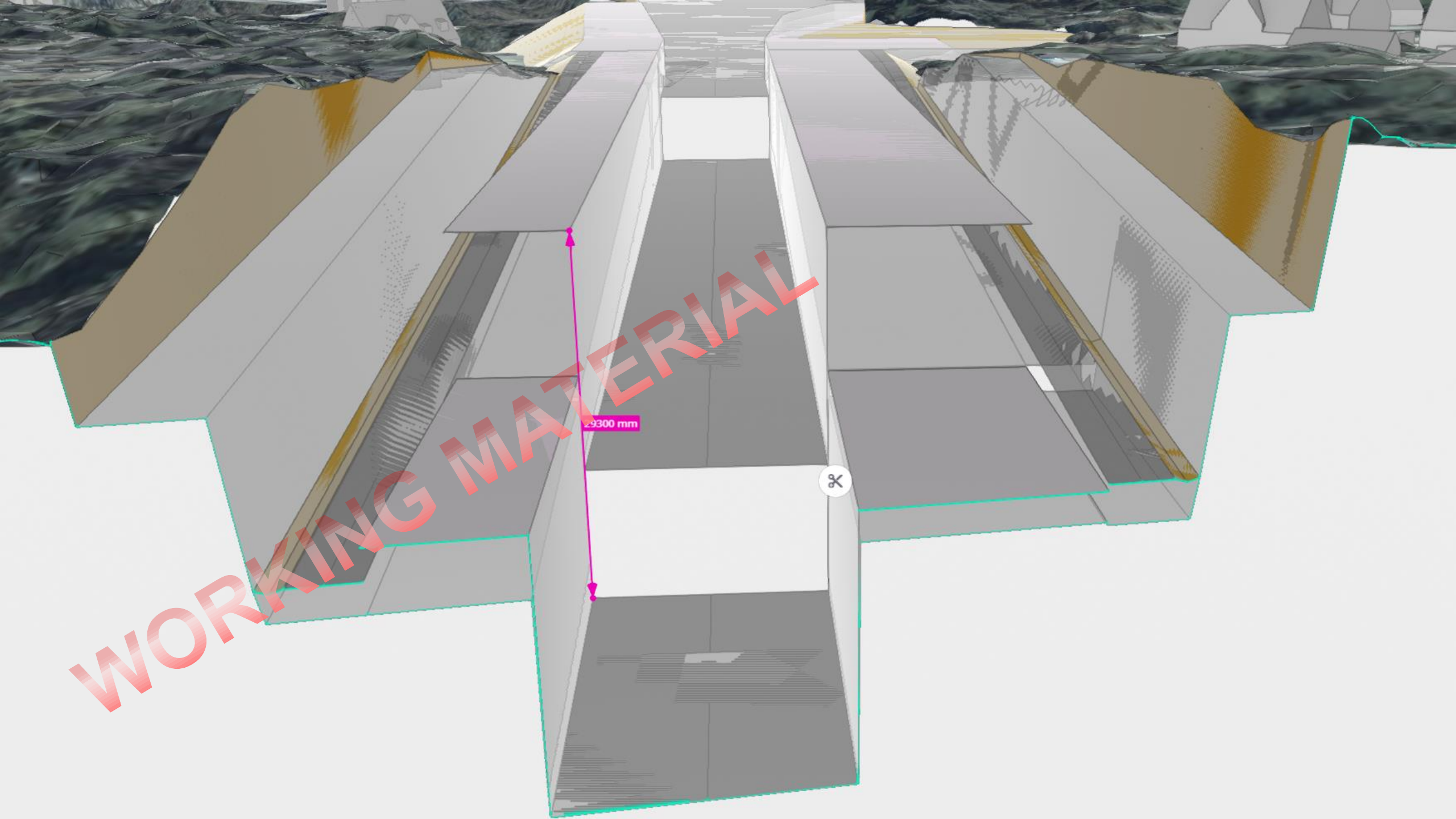
Preparatory works

- Bascule bridge crossing existing channel, temporary construction roads, mobilisation areas, other relevant infrastructure
- Start of construction 2027
- SEK 200 million

WORKING MATERIAL



WORKING MATERIAL



29300 mm



WORKING MATERIAL



WORKING MATERIAL

Trollhättan

Excavation	150 000	m3
Rocks	650 000	m3
Cable rerouting	1 500	m
Rocks in the channel	80 000	m3
Lock		
Sheet piles	2 000	m2
Concrete	70 000	m3
Steel	500	ton (which of approx 80 tons stainless)
Steering system		
Jetty guides and quays	1 100	m
Bascule bridge	2	pcs (200 and 600 m2)
Dredging		
Clay	78 000	m3
Rocks	25 000	3



Vänernsborg

Lock

- Rock excavation, channel, gates, guiding joints, dredging etc.
- SEK 1 000 million
- RFP Q3 2027
- Start of construction Q3 2028

Preparatory works

- Construction roads, mobilisation areas, other relevant infrastructure etc.
- SEK 20 million
- RFP Q1 2027
- Start of construction Q4 2027

Securing existing lock

- RFP 2031
- Start of construction 2032

Vänersborg



Vänernsborg

Excavation	35 000 m ³
Cable rerouting	1 000 m
Construction roads	10 000 m

Lock

RD piles	9 000 m ²
Excavation within sheet piles	120 000 m ³ (which of 25 000 m ³ is rocks)
Concrete	50 000 m ³
Steel	300 ton (which of approx 50 ton is stainless)
Steering system	
Guiding joints	500 m

Dredging

Clay	130 000 m ³
Moraine	40 000 m ³
Rocks	13 000 m ³



Presentation of the contractor

Your thoughts concerning what makes this a successful project, maximum 10 minutes



Business orientation excavation contracts

Trollhättan

- Rock excavation
- Approx. SEK 400 million

Bonus and penalty:

- Scheduled times for delivery
- Environmental impact

Lilla Edet

- Soil removal and reinforcement by lime cement columns
- Approx. SEK 400 — 500 million

Bonus and penalty:

- Environmental impact

Type of contract:

Construction contract according to AB04 — General Conditions of Contract for Building, Civil Engineering and Building Services

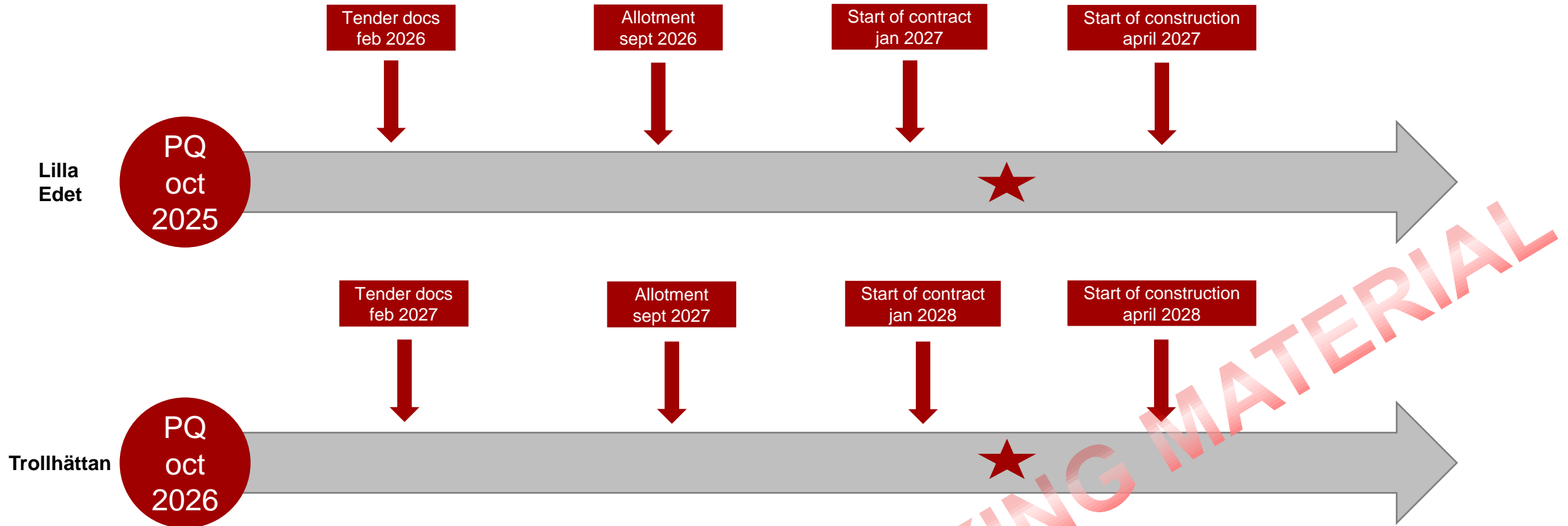
Form of remuneration:

Fixed price based on a bill of quantities with adjustable amounts

The Swedish transport administration provides a recipient destination for the masses



Preliminary timeplan for earthworks



- Time for calculation 6 months (included prequalification)
- Establishment 2 months

★ Environmental judgement and decision for start of construction in February 2027 Lilla Edet och February 2028 Trollhättan

WORKING MATERIAL

Business orientation lock contracts

Trollhättan

- Construction of lock including chamber, gates, jetty guides, dredging, temporary structures etc.
- Approx. SEK 2 100 million

Lilla Edet

- Construction of lock including chamber, gates, jetty guides, dredging, temporary structures etc.
- Over SEK 1 000 million

Type of contract:

- ECI with consultant contract ABK09 in phase 1 and design and construct contract ABT06 in phase 2

Form of remuneration:

- Current account with a fixed fee or a percentage fee, based on a agreed target cost
- A demarcation list clarifying what's included in the fee
- Price list with frequent recurring resources



Business orientation lock contracts

Bonus*:

- Collaboration between contracted parties and between contractors
- Climate and environmental innovation (Life cycle cost, climate-smart production methods)
- Jointly set deadlines
- Time and cost savings regarding temporary geotechnical constructions
- Efficient and safe execution

Penalty*:

- Jointly set deadlines
- Consideration of ongoing shipping
- Environmental impact
- Reduced production of power (TWh)



* In addition to the guidelines of Trafikverket

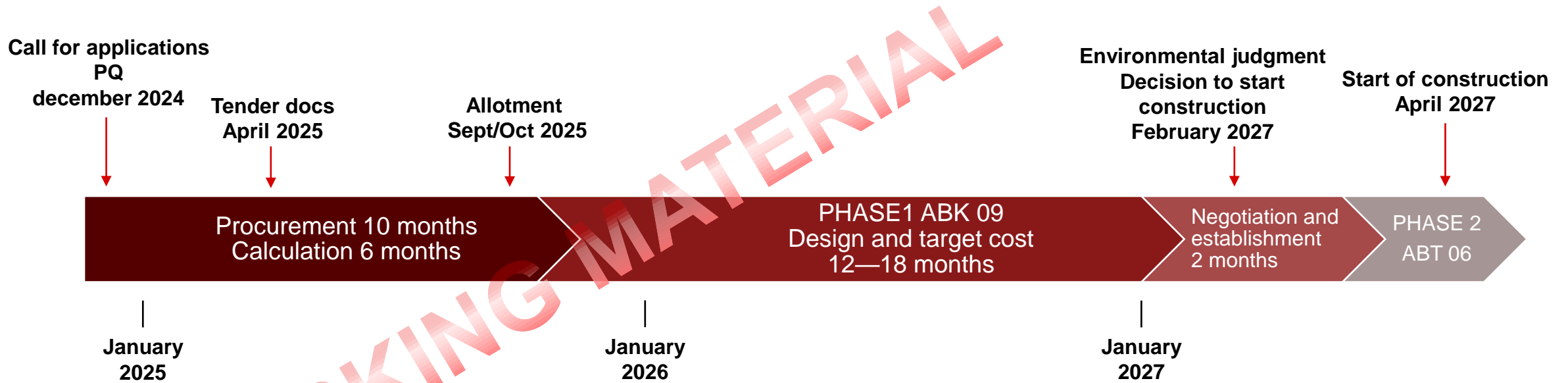
Business orientation lock contracts

Evaluation on added value regarding:

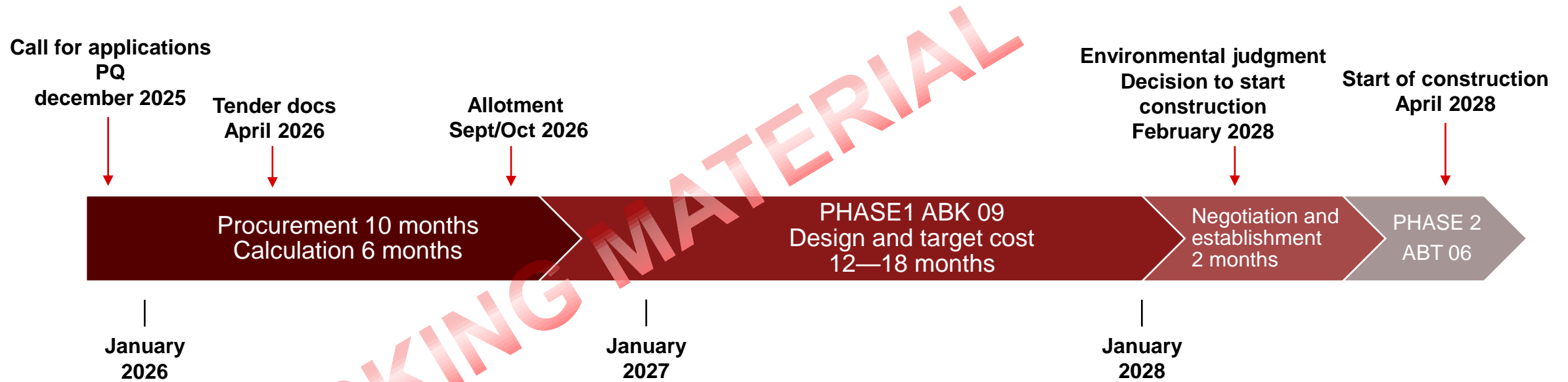
- The SMART-model
- Implementationdescription
- Environmental impact
 - Impact on ongoing shipping
- Key figures/maintained organisation
- Cooperation/collaboration
- Cost control and efficiency



Preliminary timeplan for the lockcontract in Lilla Edet



Preliminary timeplan for the lockcontract in Trollhättan



Preparatory contract Trollhättan

<i>Included works:</i>	Bascule bridge crossing existing channel, temporary construction roads, mobilisation areas, other relevant infrastructure
<i>Sum of contract:</i>	SEK 200 million
<i>Type of contract:</i>	Design and build according to ABT06
<i>Start of construction:</i>	Spring year 2027, construction period 1 year (environmental judgment)
<i>Form of remuneration:</i>	Fixed price



WORKING MATERIAL

Thank you for your interest!

General questions and conclusions

- Contract in relation to start of construction
- Environmental judgement
- Insurances

