

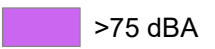

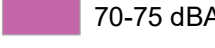

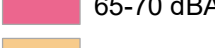

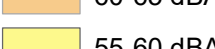
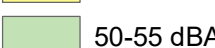
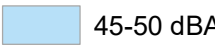


**VP E4 DAGLÖSTEN - LJUSVATTNET**

Bullerutbredning, ljudutbredning för nuläge 2023

Datum: 2023-03-09

Karta 1 av 4

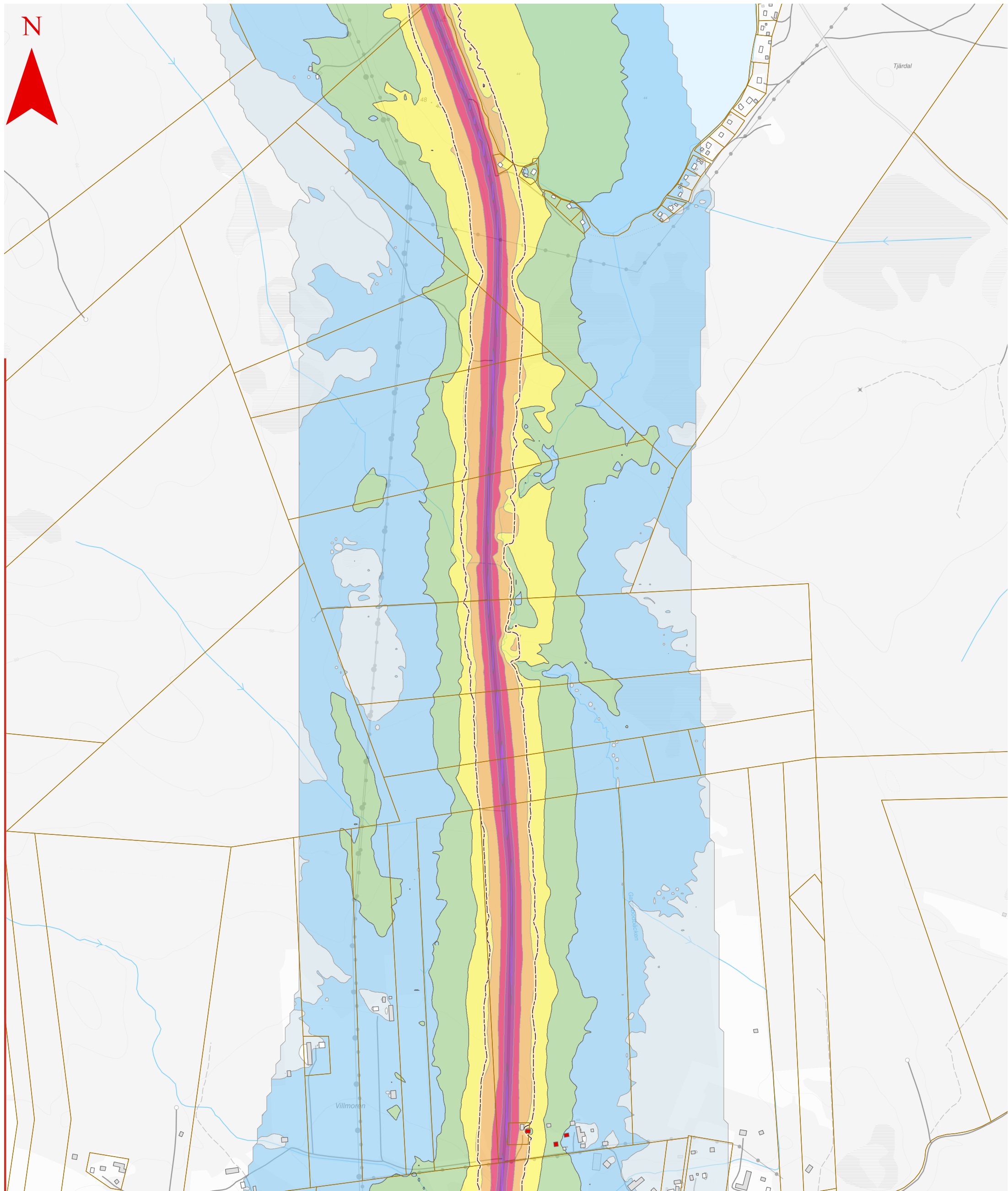
Ekvivalent ljudutbredning,  
2 meter över mark

- |   |           |  |                                |
|---|-----------|--|--------------------------------|
|  | >75 dBA   |  | 70 dBA max                     |
|  | 70-75 dBA |  | <b>Byggnader</b><br>Bostadshus |
|  | 65-70 dBA |  | Bullerberörd                   |
|  | 60-65 dBA |  |                                |
|  | 55-60 dBA |  |                                |
|  | 50-55 dBA |  |                                |
|  | 45-50 dBA |  |                                |
|  | 40-45 dBA |  |                                |



Skala: 1:7 500





**VP E4 DAGLÖSTEN - LJUSVATTNET**

Bullerutbredning, ljudutbredning för nuläge 2023

Datum: 2023-03-09

Karta 2 av 4

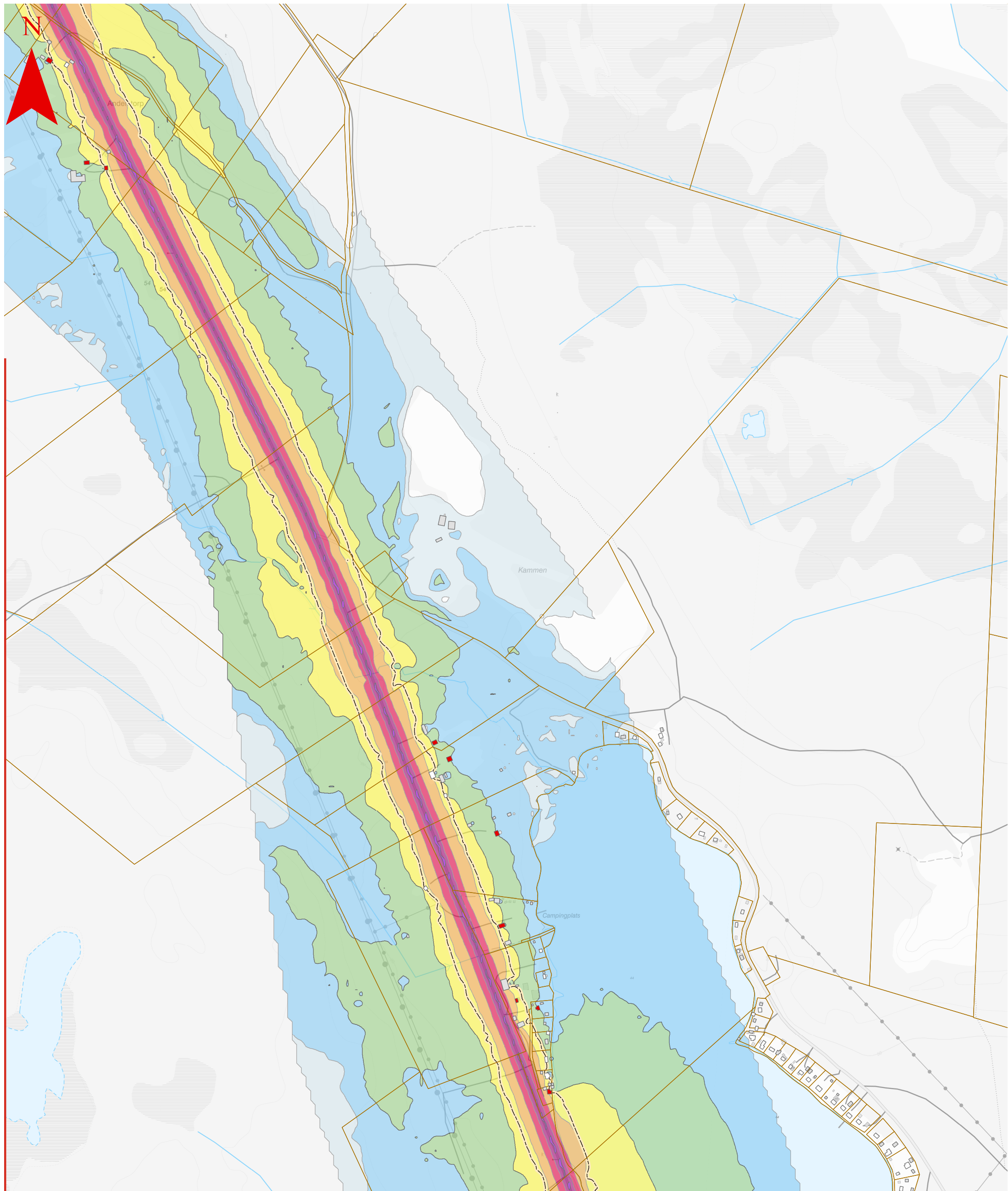
Ekvivalent ljudutbredning,  
2 meter över mark

- >75 dBA
  - 70-75 dBA
  - 65-70 dBA
  - 60-65 dBA
  - 55-60 dBA
  - 50-55 dBA
  - 45-50 dBA
  - 40-45 dBA
- 70 dBA max
  - Byggnader**
  - Bostadshus
  - Bullerberörd



Skala: 1:7 500





### VP E4 DAGLÖSTEN - LJUSVATTNET

Bullerutbredning, ljudutbredning för nuläge 2023

Datum: 2023-03-09

Karta 3 av 4

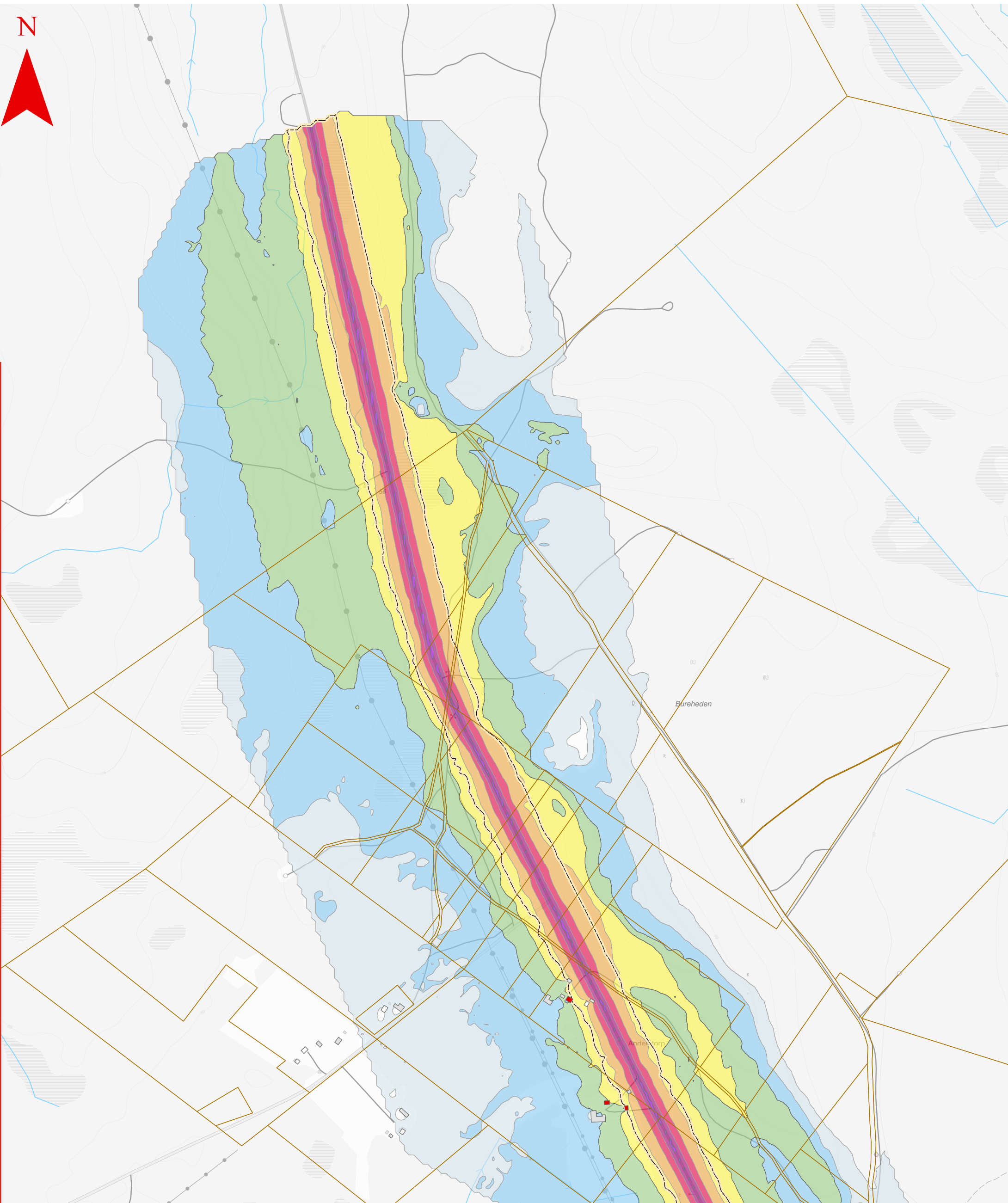
Ekvivalent ljudutbredning,  
2 meter över mark

- >75 dBA
  - 70-75 dBA
  - 65-70 dBA
  - 60-65 dBA
  - 55-60 dBA
  - 50-55 dBA
  - 45-50 dBA
  - 40-45 dBA
- 70 dBA max
  - Byggnader**
  - Bostadshus
  - Bullerberörd



Skala: 1:7 500





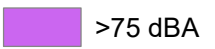

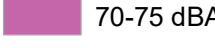

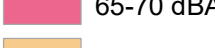

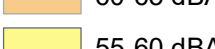
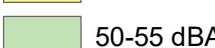
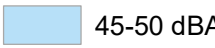


### VP E4 DAGLÖSTEN - LJUSVATTNET

Bullerutbredning, ljudutbredning för nuläge 2023

Datum: 2023-03-09

Karta 4 av 4

Ekvivalent ljudutbredning,  
2 meter över mark

- |   |           |  |                                |
|---|-----------|--|--------------------------------|
|  | >75 dBA   |  | 70 dBA max                     |
|  | 70-75 dBA |  | <b>Byggnader</b><br>Bostadshus |
|  | 65-70 dBA |  | Bullerberörd                   |
|  | 60-65 dBA |  |                                |
|  | 55-60 dBA |  |                                |
|  | 50-55 dBA |  |                                |
|  | 45-50 dBA |  |                                |
|  | 40-45 dBA |  |                                |



# TRAFIKVERKET

Skala: 1:7 500

