

Supplier information February 11 & 12 2021

E6.21 Lundbyleden, Streets at Backaplan,
Bohusbanan and Brunnsbo station

E6.21 Lundbyleden, Streets at Backaplan, Bohusbanan and Brunnsbo station

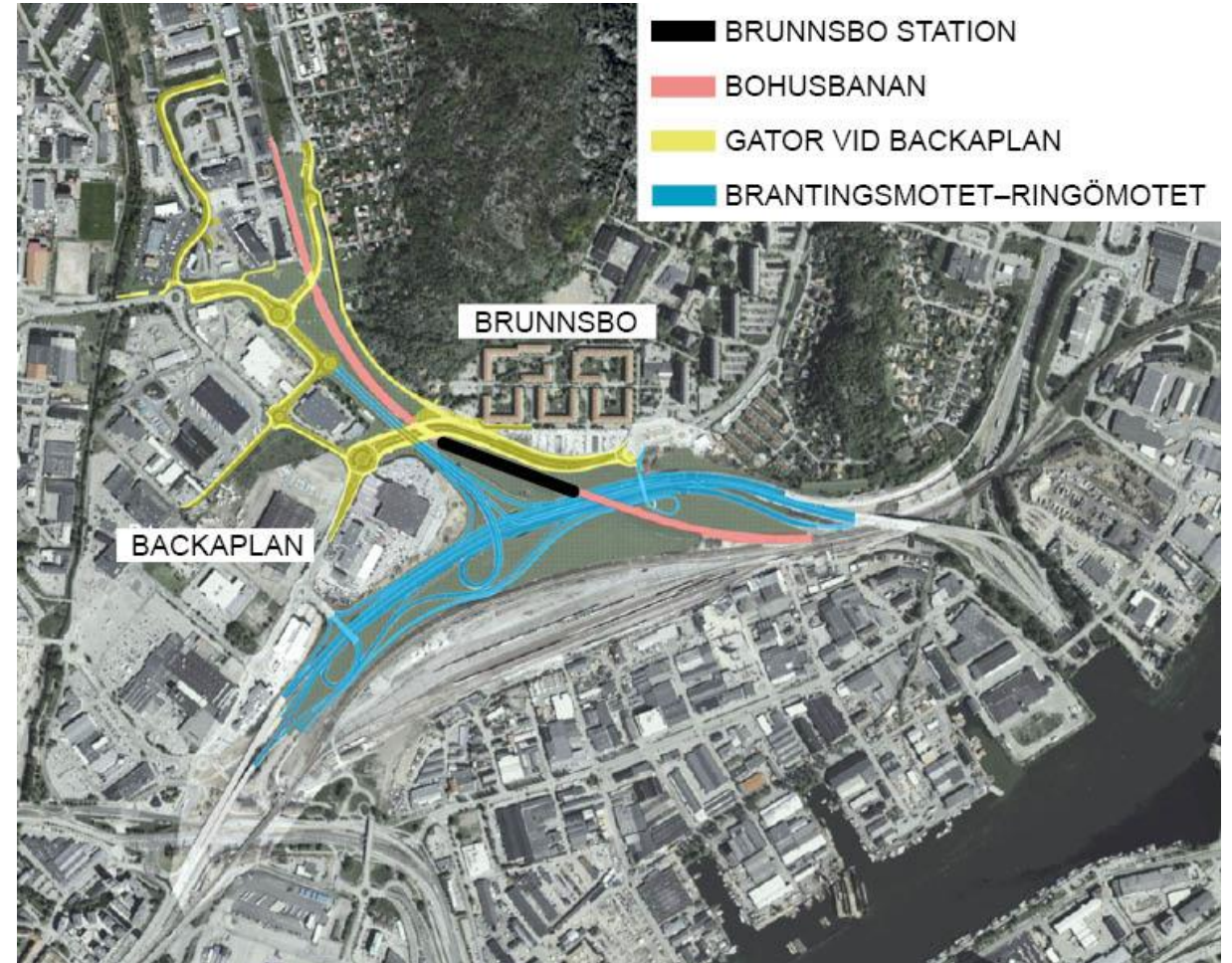
Presentation of the project and the upcoming procurement of construction contract

Jan Olofsson

Project manager, Trafikverket



The estimated worth of the construction works - > MSEK 1000



Description

Where: Gothenburg city, Västra Götalands Län.

Road E6.21 Lundbyleden the part Brantingsmotet–Ringömotet, Streets at Backaplan and Bohusbanan at Brunnsbo.

What: Lundbyleden will be adjusted by rebuilding three interchanges: One existing interchange is adjusted, one is demolished and one is completely new.

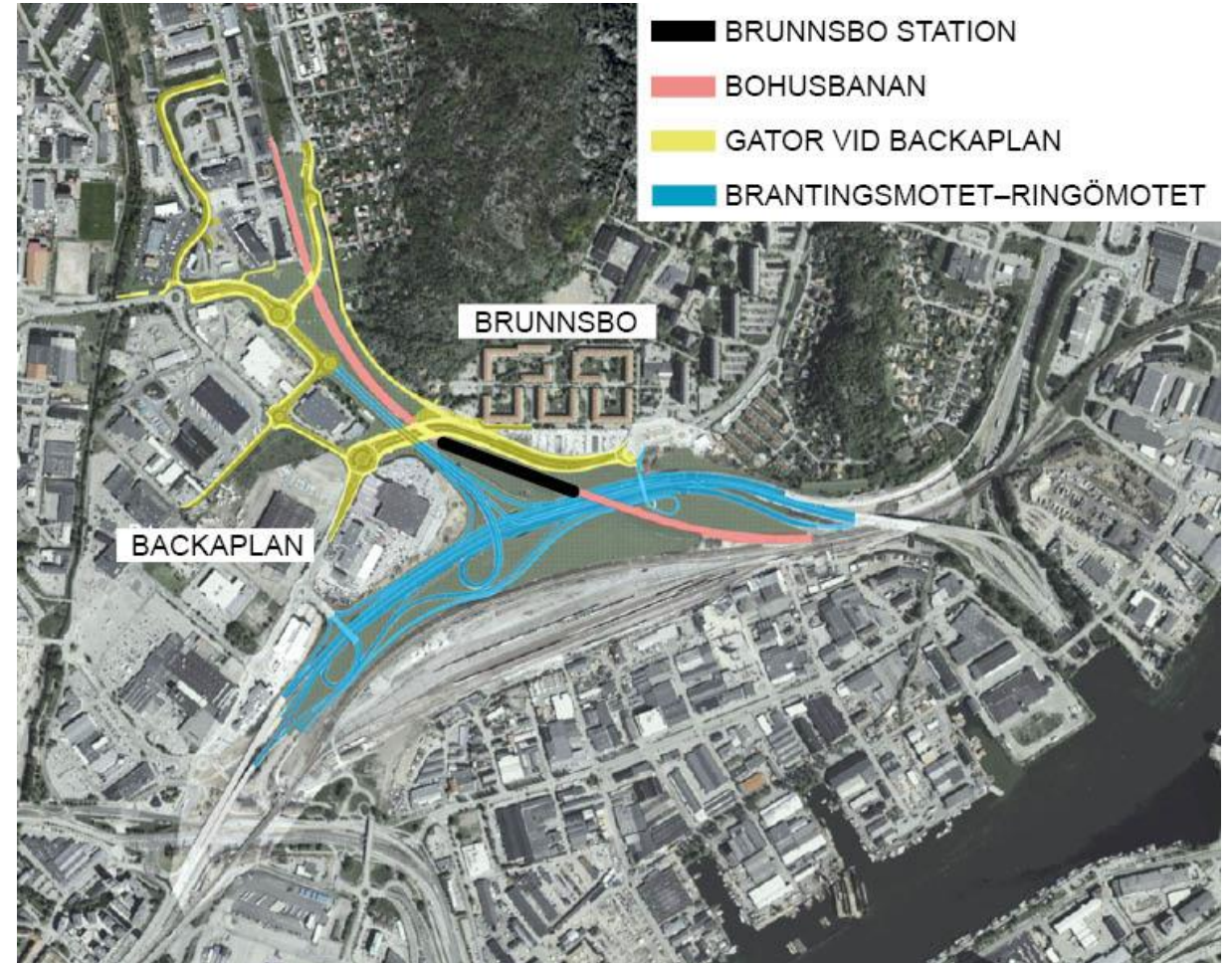
Streets by Backaplan are rebuilt and adjusted for an improved flow of traffic and further urban development.

Bohusbanan will be expanded to double-track including a new train station for commuters at Brunnsbo.

Why: To increase traffic safety and the connection to the local road network.

To adapt Lundbyleden to the ongoing densification with residential, retail and other businesses along Norra Älvstranden and Backaplan, and to new infrastructure projects.

In order to decrease the sensitivity to disturbances, Bohusbanan will be rebuilt to double-track past Brunnsbo. In connection with the above we will also build a new train station for commuters at Brunnsbo, to make it easier to commute to other parts of and Gothenburg.



Description

Where: Gothenburg city, Västra Götalands Län.

Road E6.21 Lundbyleden the part Brantingsmotet–Ringömotet, Streets at Backaplan and Bohusbanan at Brunnsbo.

What: Lundbyleden will be adjusted by rebuilding three interchanges: One existing interchange is adjusted, one is demolished and one is completely new.

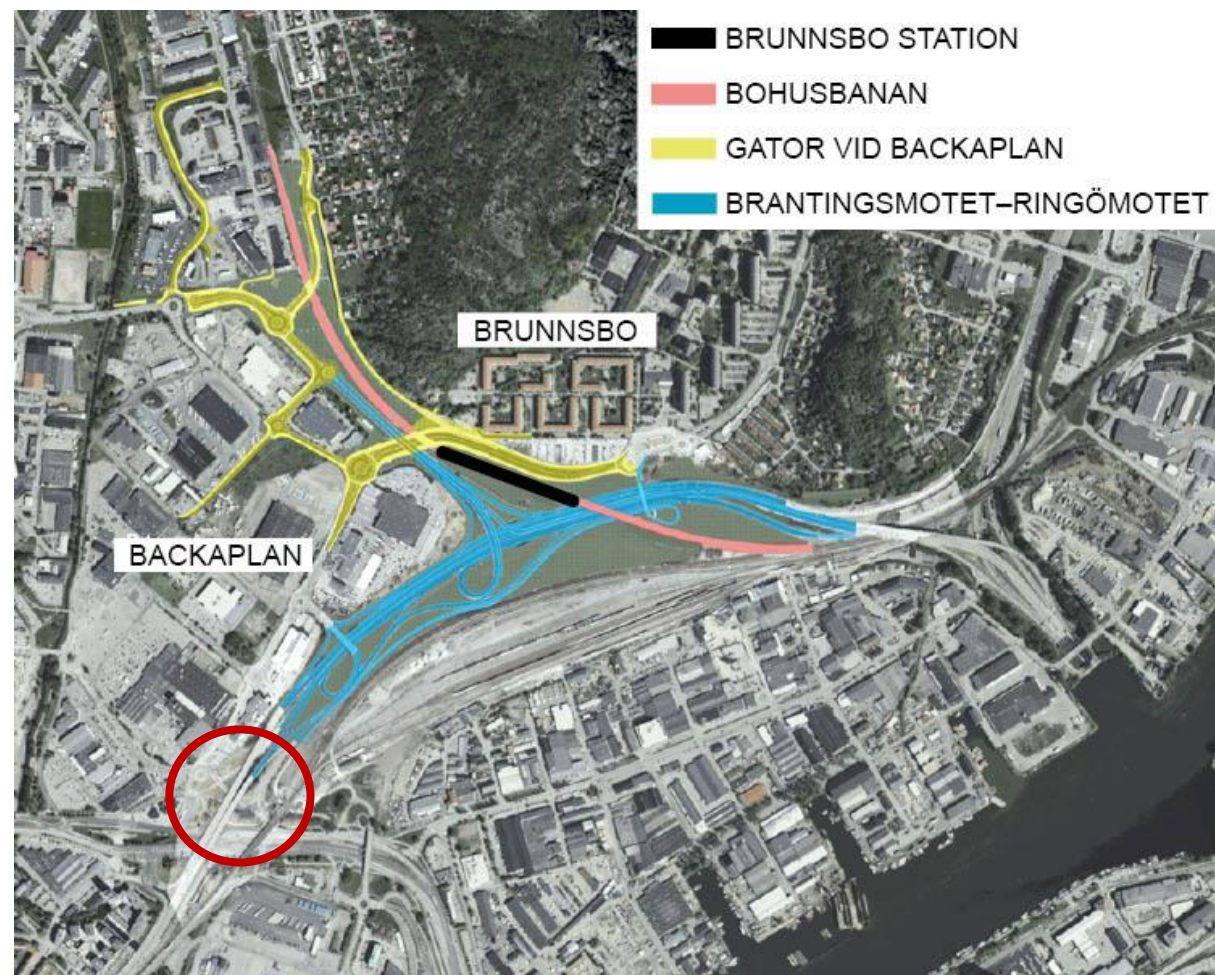
Streets by Backaplan are rebuilt and adjusted for an improved flow of traffic and further urban development.

Bohusbanan will be expanded to double-track including a new train station for commuters at Brunnsbo.

Why: To increase traffic safety and the connection to the local road network.

To adapt Lundbyleden to the ongoing densification with residential, retail and other businesses along Norra Älvstranden and Backaplan, and to new infrastructure projects.

In order to decrease the sensitivity to disturbances, Bohusbanan will be rebuilt to double-track past Brunnsbo. In connection with the above we will also build a new train station for commuters at Brunnsbo, to make it easier to commute to other parts of and Gothenburg.



Description

Where: Gothenburg city, Västra Götalands Län.

Road E6.21 Lundbyleden the part Brantingsmotet–Ringömotet, Streets at Backaplan and Bohusbanan at Brunnsbo.

What: Lundbyleden will be adjusted by rebuilding three interchanges: One existing interchange is adjusted, one is demolished and one is completely new.

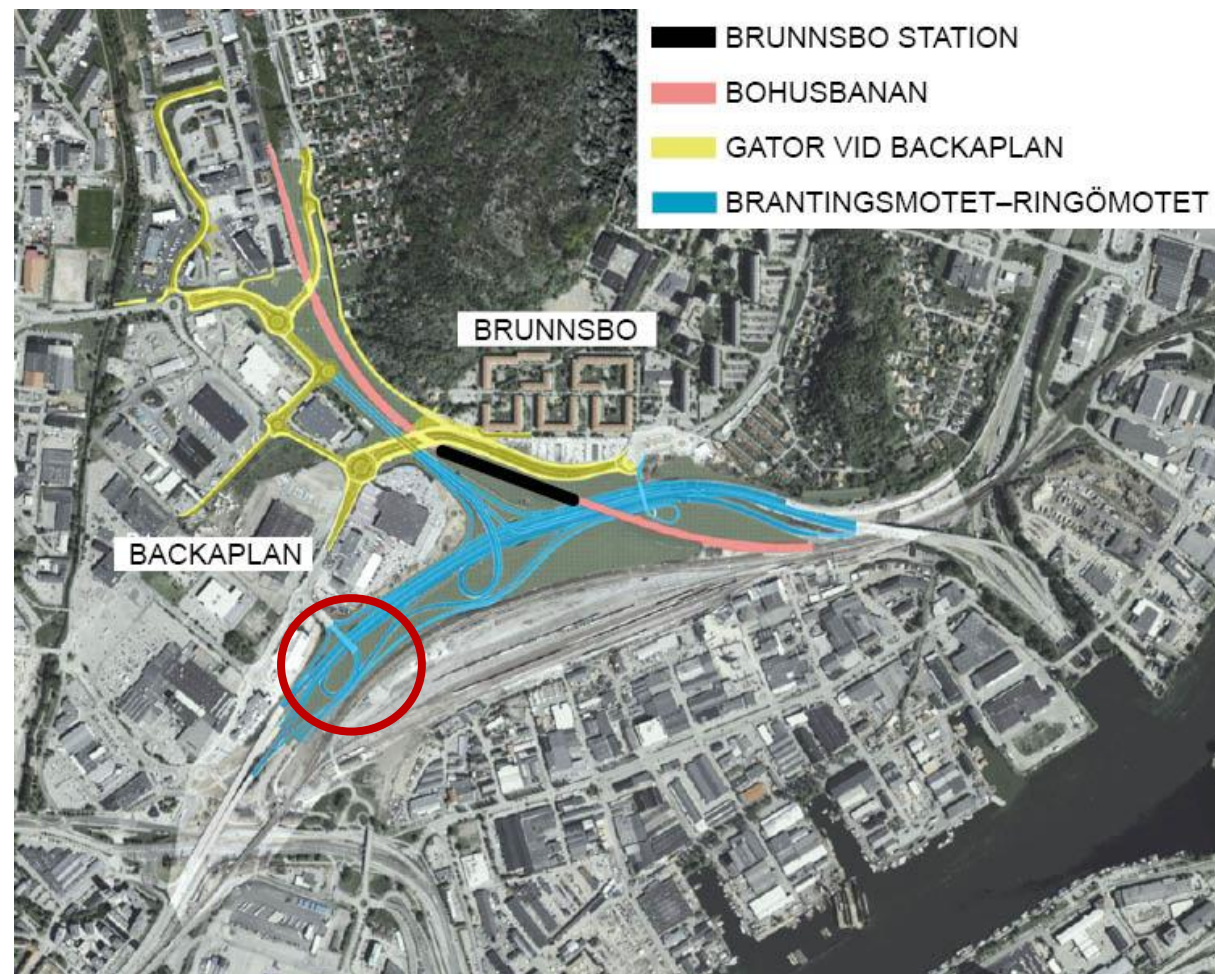
Streets by Backaplan are rebuilt and adjusted for an improved flow of traffic and further urban development.

Bohusbanan will be expanded to double-track including a new train station for commuters at Brunnsbo.

Why: To increase traffic safety and the connection to the local road network.

To adapt Lundbyleden to the ongoing densification with residential, retail and other businesses along Norra Älvstranden and Backaplan, and to new infrastructure projects.

In order to decrease the sensitivity to disturbances, Bohusbanan will be rebuilt to double-track past Brunnsbo. In connection with the above we will also build a new train station for commuters at Brunnsbo, to make it easier to commute to other parts of and Gothenburg.



Description

Where: Gothenburg city, Västra Götalands Län.

Road E6.21 Lundbyleden the part Brantingsmotet–Ringömotet, Streets at Backaplan and Bohusbanan at Brunnsbo.

What: Lundbyleden will be adjusted by rebuilding three interchanges: One existing interchange is adjusted, one is demolished and one is completely new.

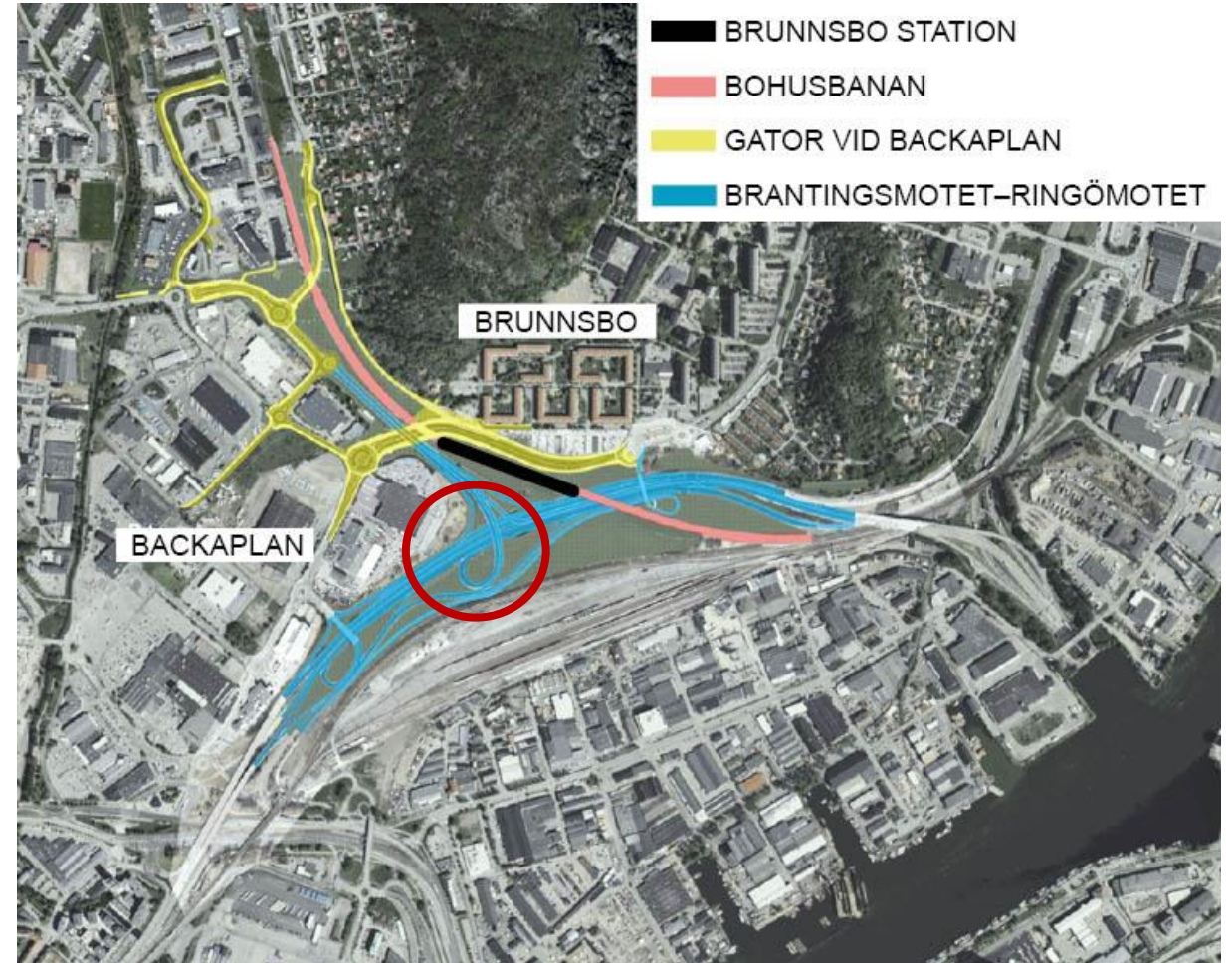
Streets by Backaplan are rebuilt and adjusted for an improved flow of traffic and further urban development.

Bohusbanan will be expanded to double-track including a new train station for commuters at Brunnsbo.

Why: To increase traffic safety and the connection to the local road network.

To adapt Lundbyleden to the ongoing densification with residential, retail and other businesses along Norra Älvstranden and Backaplan, and to new infrastructure projects.

In order to decrease the sensitivity to disturbances, Bohusbanan will be rebuilt to double-track past Brunnsbo. In connection with the above we will also build a new train station for commuters at Brunnsbo, to make it easier to commute to other parts of and Gothenburg.



Description

Where: Gothenburg city, Västra Götalands Län.

Road E6.21 Lundbyleden the part Brantingsmotet–Ringömotet, Streets at Backaplan and Bohusbanan at Brunnsbo.

What: Lundbyleden will be adjusted by rebuilding three interchanges: One existing interchange is adjusted, one is demolished and one is completely new.

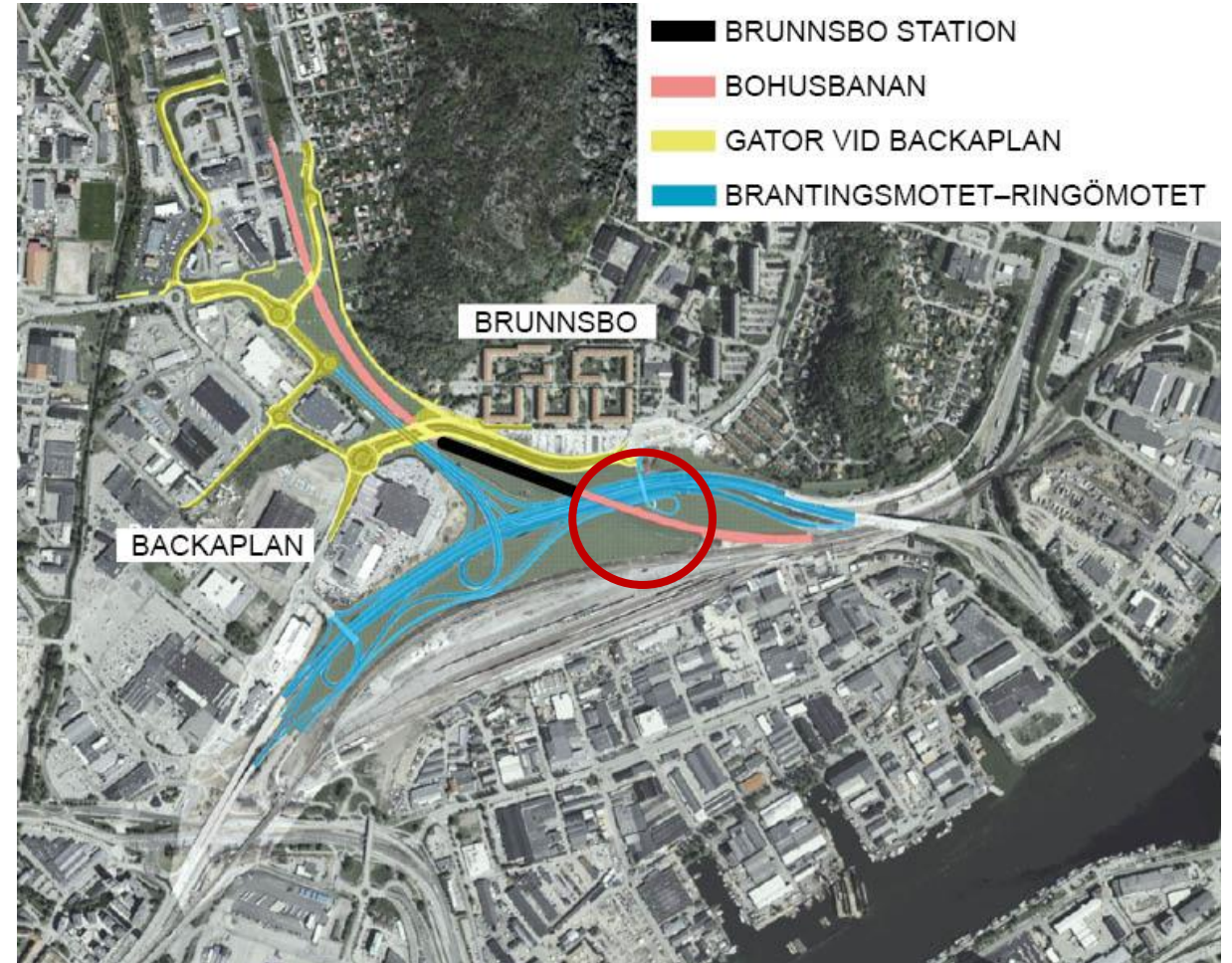
Streets by Backaplan are rebuilt and adjusted for an improved flow of traffic and further urban development.

Bohusbanan will be expanded to double-track including a new train station for commuters at Brunnsbo.

Why: To increase traffic safety and the connection to the local road network.

To adapt Lundbyleden to the ongoing densification with residential, retail and other businesses along Norra Älvstranden and Backaplan, and to new infrastructure projects.

In order to decrease the sensitivity to disturbances, Bohusbanan will be rebuilt to double-track past Brunnsbo. In connection with the above we will also build a new train station for commuters at Brunnsbo, to make it easier to commute to other parts of and Gothenburg.



Description

Where: Gothenburg city, Västra Götalands Län.

Road E6.21 Lundbyleden the part Brantingsmotet–Ringömotet, Streets at Backaplan and Bohusbanan at Brunnsbo.

What: Lundbyleden will be adjusted by rebuilding three interchanges: One existing interchange is adjusted, one is demolished and one is completely new.

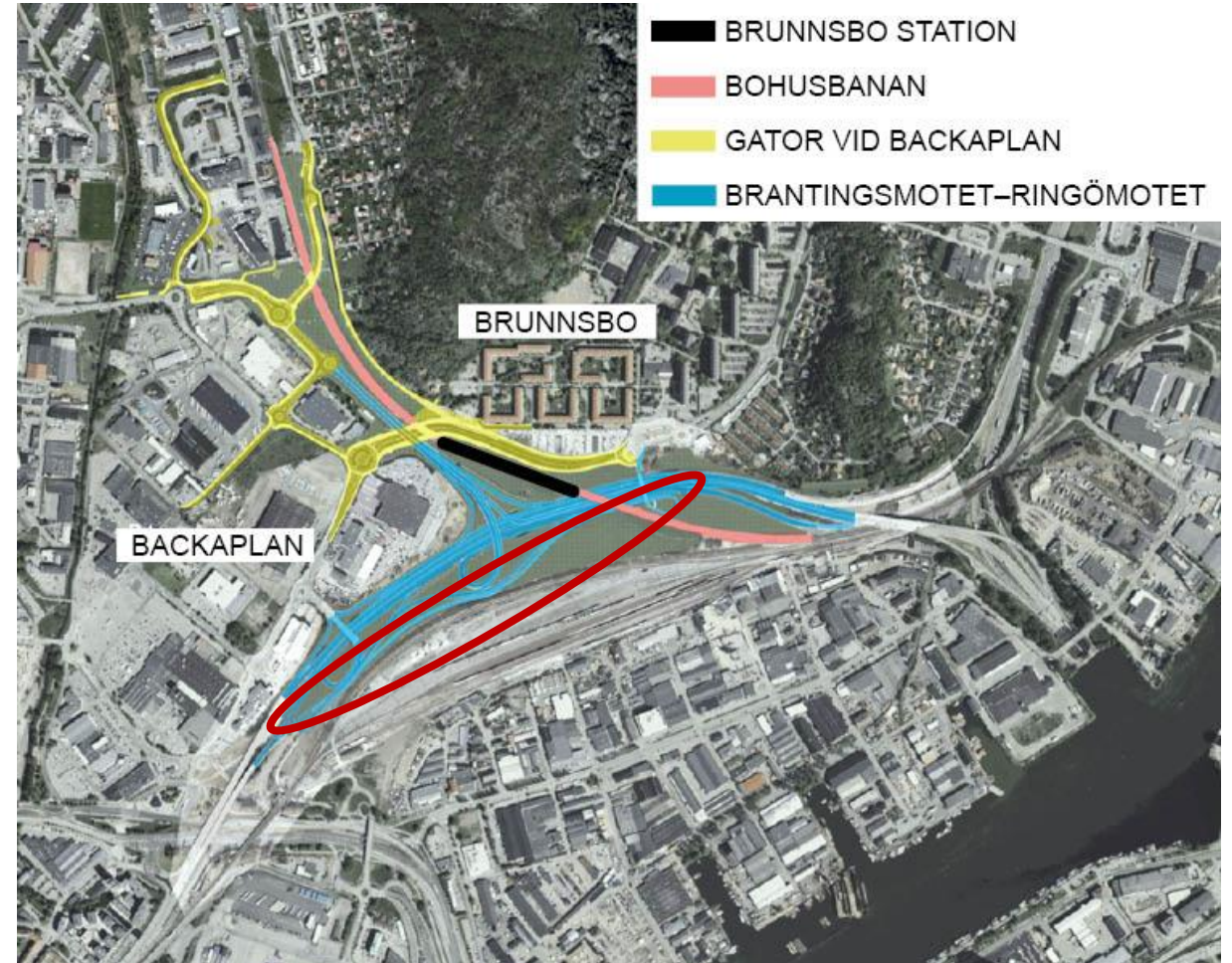
Streets by Backaplan are rebuilt and adjusted for an improved flow of traffic and further urban development.

Bohusbanan will be expanded to double-track including a new train station for commuters at Brunnsbo.

Why: To increase traffic safety and the connection to the local road network.

To adapt Lundbyleden to the ongoing densification with residential, retail and other businesses along Norra Älvstranden and Backaplan, and to new infrastructure projects.

In order to decrease the sensitivity to disturbances, Bohusbanan will be rebuilt to double-track past Brunnsbo. In connection with the above we will also build a new train station for commuters at Brunnsbo, to make it easier to commute to other parts of and Gothenburg.



Description

Where: Gothenburg city, Västra Götalands Län.

Road E6.21 Lundbyleden the part Brantingsmotet–Ringömotet, Streets at Backaplan and Bohusbanan at Brunnsbo.

What: Lundbyleden will be adjusted by rebuilding three interchanges: One existing interchange is adjusted, one is demolished and one is completely new.

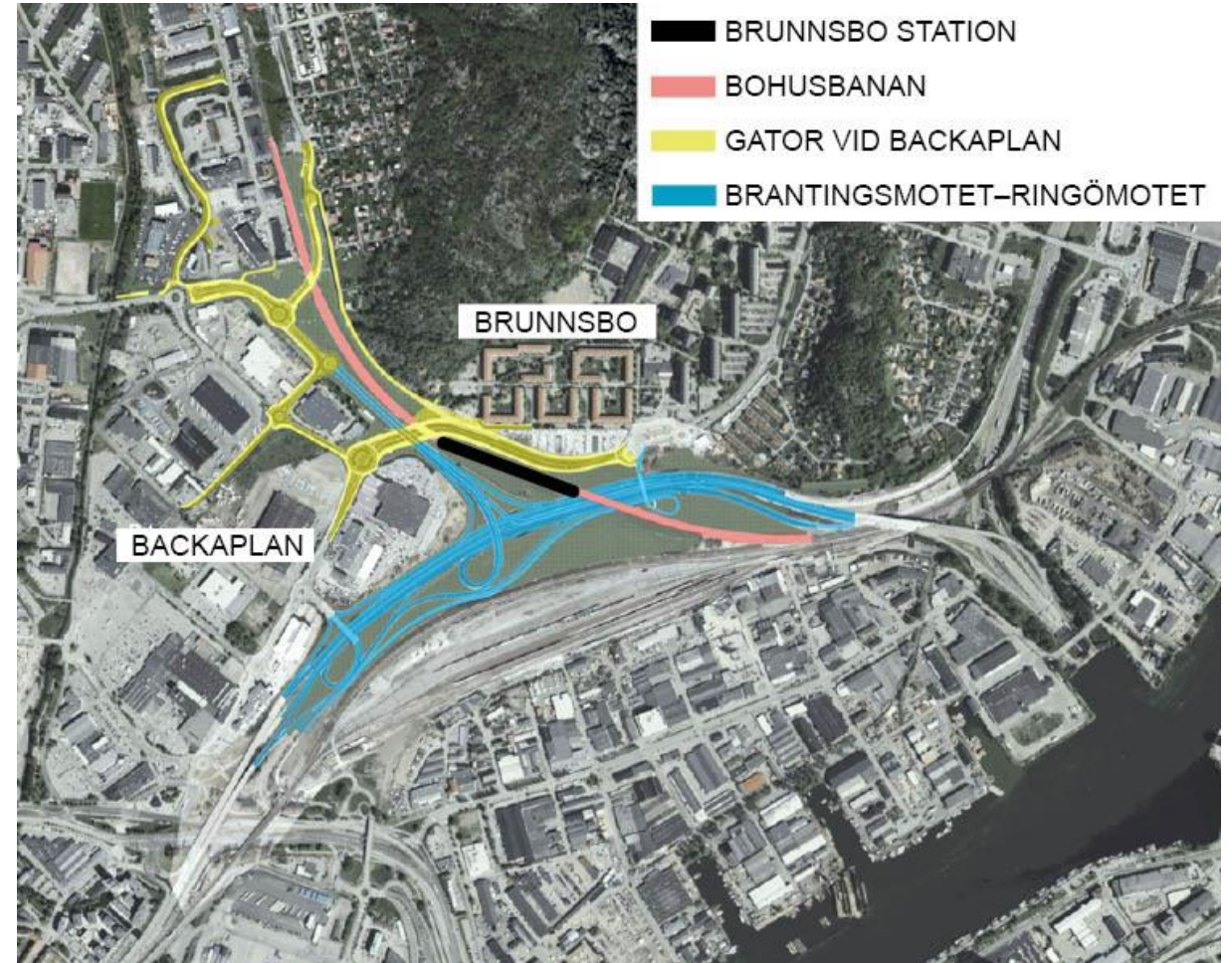
Streets by Backaplan are rebuilt and adjusted for an improved flow of traffic and further urban development.

Bohusbanan will be expanded to double-track including a new train station for commuters at Brunnsbo.

Why: To increase traffic safety and the connection to the local road network.

To adapt Lundbyleden to the ongoing densification with residential, retail and other businesses along Norra Älvstranden and Backaplan, and to new infrastructure projects.

In order to decrease the sensitivity to disturbances, Bohusbanan will be rebuilt to double-track past Brunnsbo. In connection with the above we will also build a new train station for commuters at Brunnsbo, to make it easier to commute to other parts of and Gothenburg.



Description

Where: Gothenburg city, Västra Götalands Län.

Road E6.21 Lundbyleden the part Brantingsmotet–Ringömotet, Streets at Backaplan and Bohusbanan at Brunnsbo.

What: Lundbyleden will be adjusted by rebuilding three interchanges: One existing interchange is adjusted, one is demolished and one is completely new.

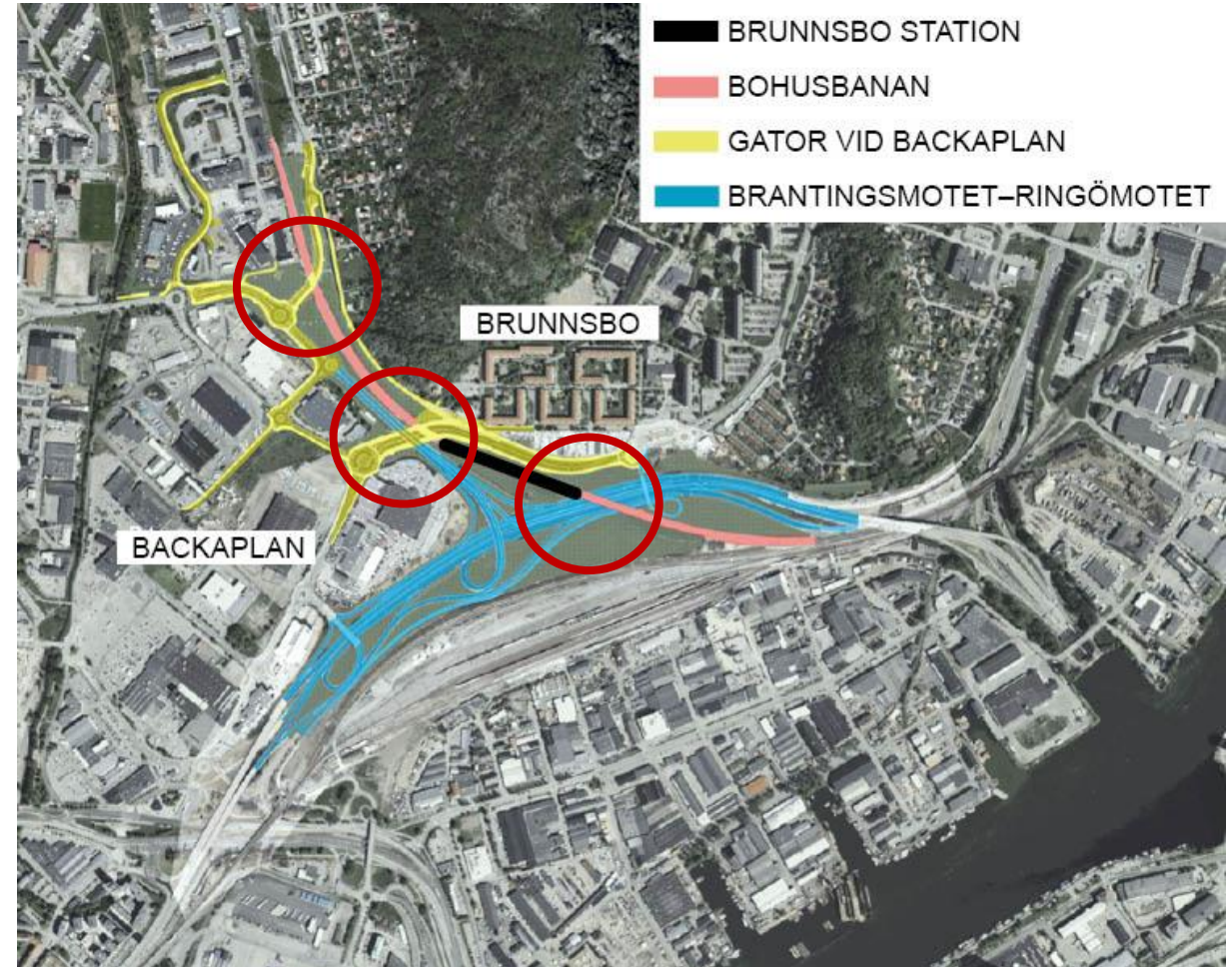
Streets by Backaplan are rebuilt and adjusted for an improved flow of traffic and further urban development.

Bohusbanan will be expanded to double-track including a new train station for commuters at Brunnsbo.

Why: To increase traffic safety and the connection to the local road network.

To adapt Lundbyleden to the ongoing densification with residential, retail and other businesses along Norra Älvstranden and Backaplan, and to new infrastructure projects.

In order to decrease the sensitivity to disturbances, Bohusbanan will be rebuilt to double-track past Brunnsbo. In connection with the above we will also build a new train station for commuters at Brunnsbo, to make it easier to commute to other parts of and Gothenburg.



Description

Where: Gothenburg city, Västra Götalands Län.

Road E6.21 Lundbyleden the part Brantingsmotet–Ringömotet, Streets at Backaplan and Bohusbanan at Brunnsbo.

What: Lundbyleden will be adjusted by rebuilding three interchanges: One existing interchange is adjusted, one is demolished and one is completely new.

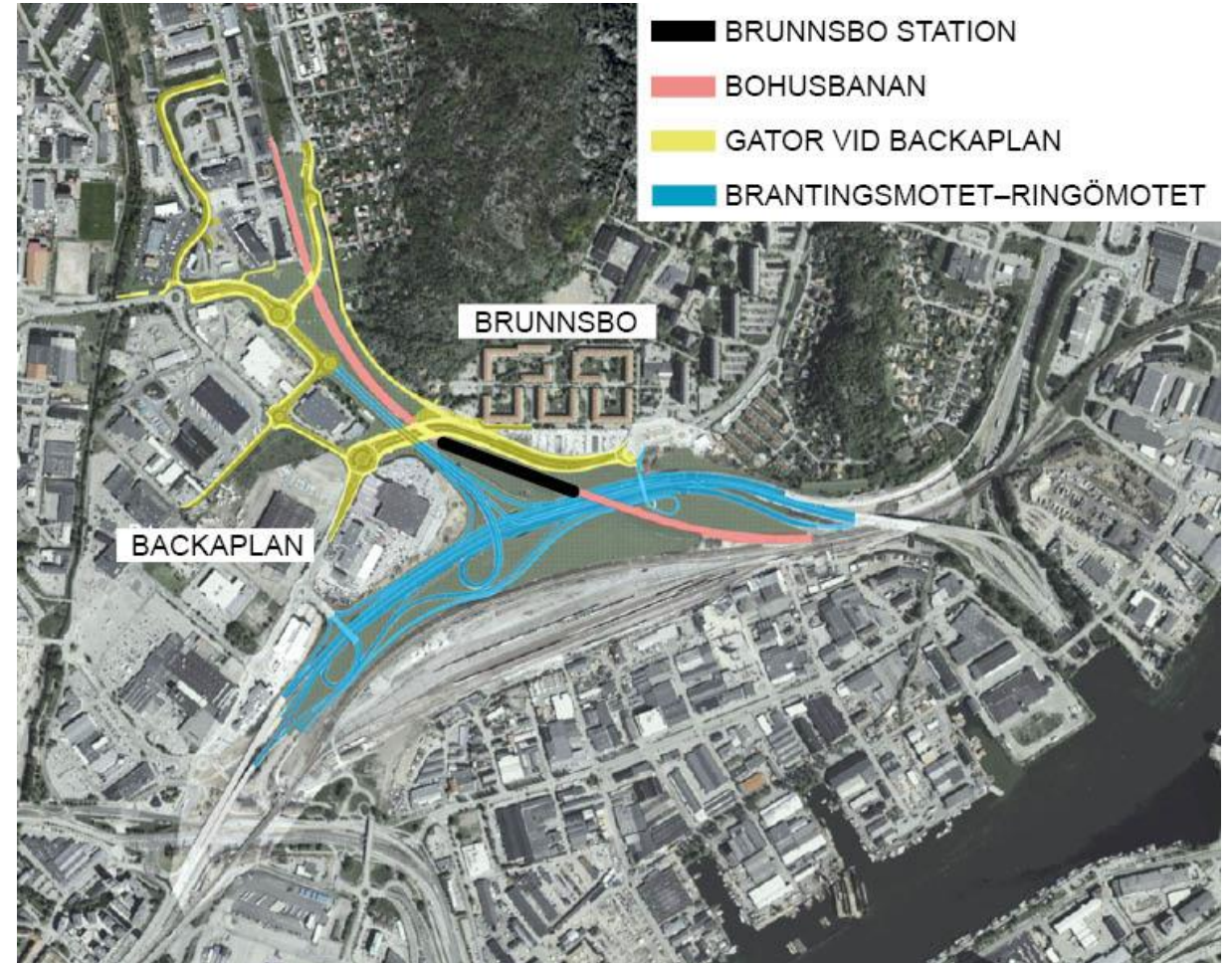
Streets by Backaplan are rebuilt and adjusted for an improved flow of traffic and further urban development.

Bohusbanan will be expanded to double-track including a new train station for commuters at Brunnsbo.

Why: To increase traffic safety and the connection to the local road network.

To adapt Lundbyleden to the ongoing densification with residential, retail and other businesses along Norra Älvstranden and Backaplan, and to new infrastructure projects.

In order to decrease the sensitivity to disturbances, Bohusbanan will be rebuilt to double-track past Brunnsbo. In connection with the above we will also build a new train station for commuters at Brunnsbo, to make it easier to commute to other parts of and Gothenburg.



Bridges

Structures	Length in m	Width in m	Bridge span
Road bridge over Lundbyleden at Kvillemotet	123	15,5	4
Ramp bridge at Kvillemotet	145	6	6
Road bridge over Backavägen	63	17	2
Railway bridge over Lundbyleden Designed as two parallel railway bridges	165	14	5
Railway bridge over Backavägen Designed as two parallel railway bridges	110	14	4
Railway bridge over Lillhagsvägen Designed as two parallel railway bridges	60	14	2
Pedestrian and bicycle bridge over Lundbyleden	59	5	2

Worth noting

The client will provide receiving facilities for surplus masses.

New model for index calculation.

The contractor will be offered payment in advance.

The BEST-part (track, electrification, signalling and telecommunication) will be a controlled technical solution.

Evaluation criteria is lowest price.

Time schedule

Planned publication of tender documents for the design & build contract:
May 2021

Project reviews are planned to be held: June 7–11 2021

Planned tender period for submitting tender design & build contract:
May 2021–November 2021

Planned start of contract: February 2022

Planned completion: 2027

Questions and answers during the information

Question 1: Is it going to be a prequalification?

Answer: No.

Question 2: The interface between the provided controlled technical solution and the existing railway, is it part of the scope?

Answer: No, the interface is handled within the technical solution and provided by the client, but the functional requirements within the design and build scope has to be adapted to the controlled technical solution.

Question 3: Is the railway bridge over Lundbyleden going to be demolished and replaced?

Answer: Yes, it will be demolished and replaced.

Questions and answers during the information

Question 4: In the overview of the bridges (picture 13) regarding parallel bridges, the length in meter, is it the total length of both bridges or is it the length of each bridge?

Answer: It is the length of each bridge.

Question 5: Is there any part of the design that are completed?

Answer: Yes, the controlled technical solution is completed.

Question 6: Is it an Early Contractor Involvement contract?

Answer: No.

Questions and answers during the information

Question 7: What is the evaluation criteria of the tender?

Answer: Lowest price.

Question 8: Is the temporary traffic solution during the design and build phase part of the design and build contract?

Answer: The solution is part of the design and build contract and the requirements will be described in the tender documents.

Question 9: What about the value of the project?

Answer: The value of the construction works is estimated to be more than MSEK 1000.

Thank you!

