

**E4 Kongberget-
Gnarp**

Vyer ur VR modell

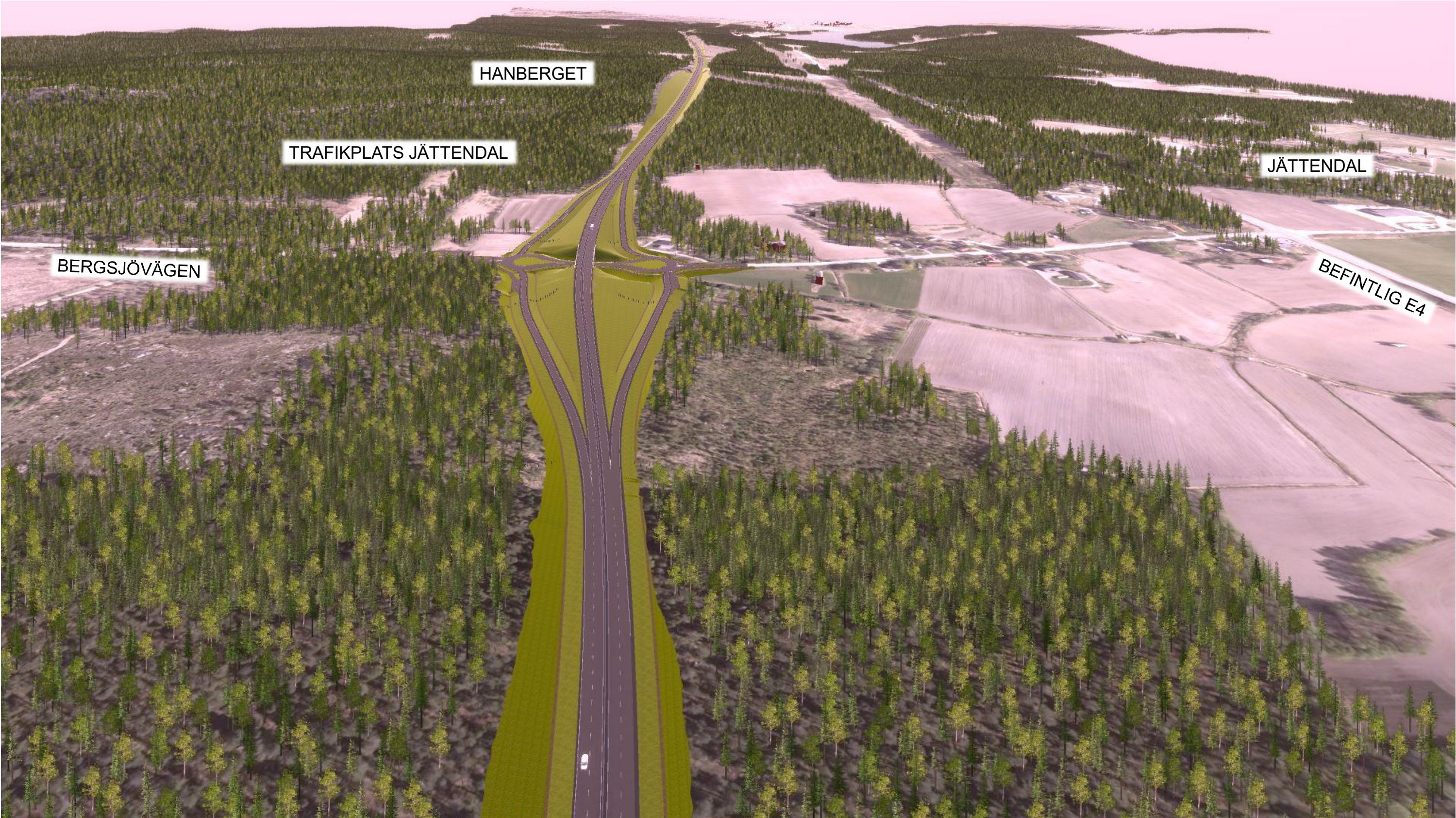
Från söder mot norr

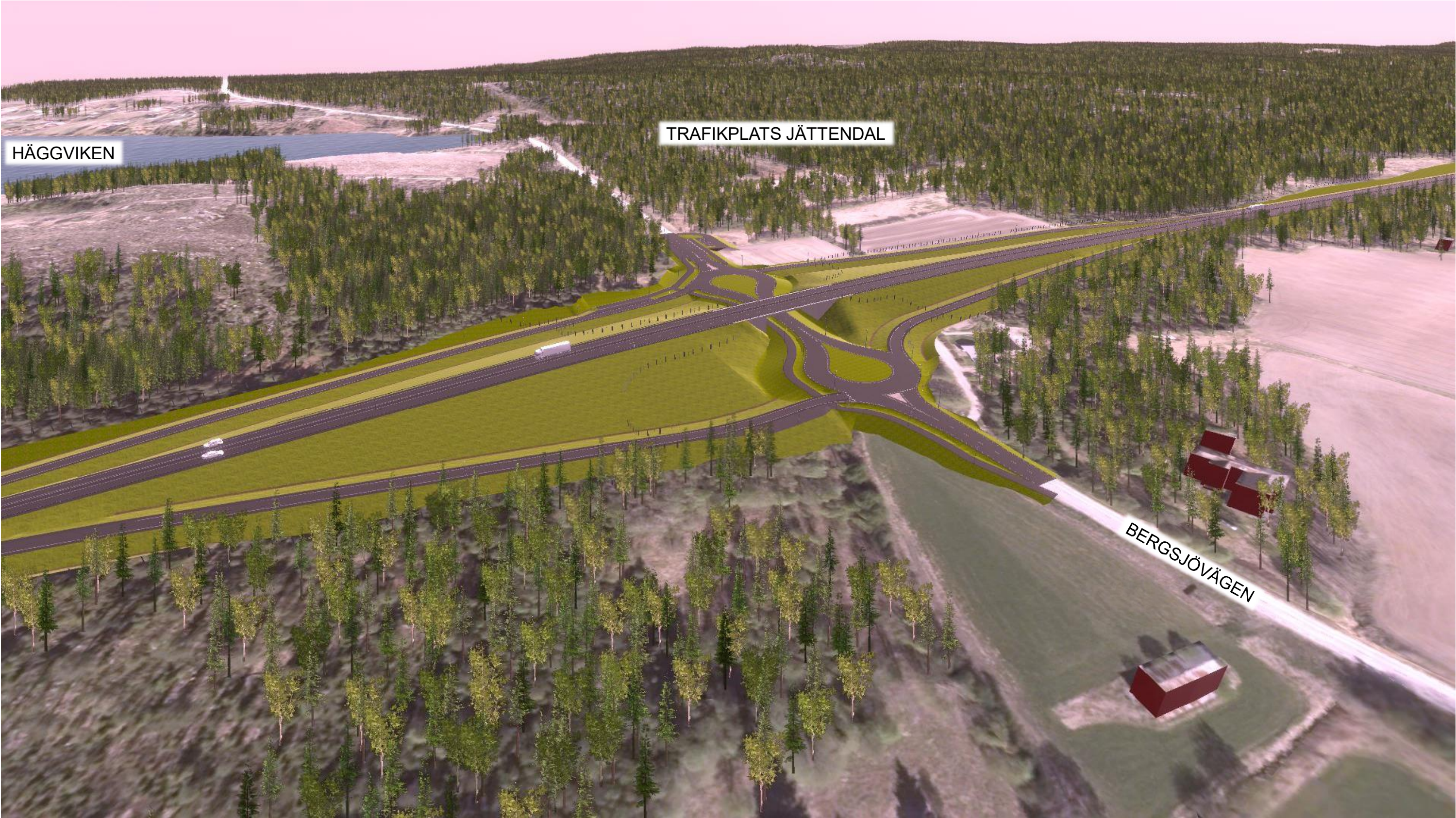
Del 2



TRAFIKVERKET

2021-06-21





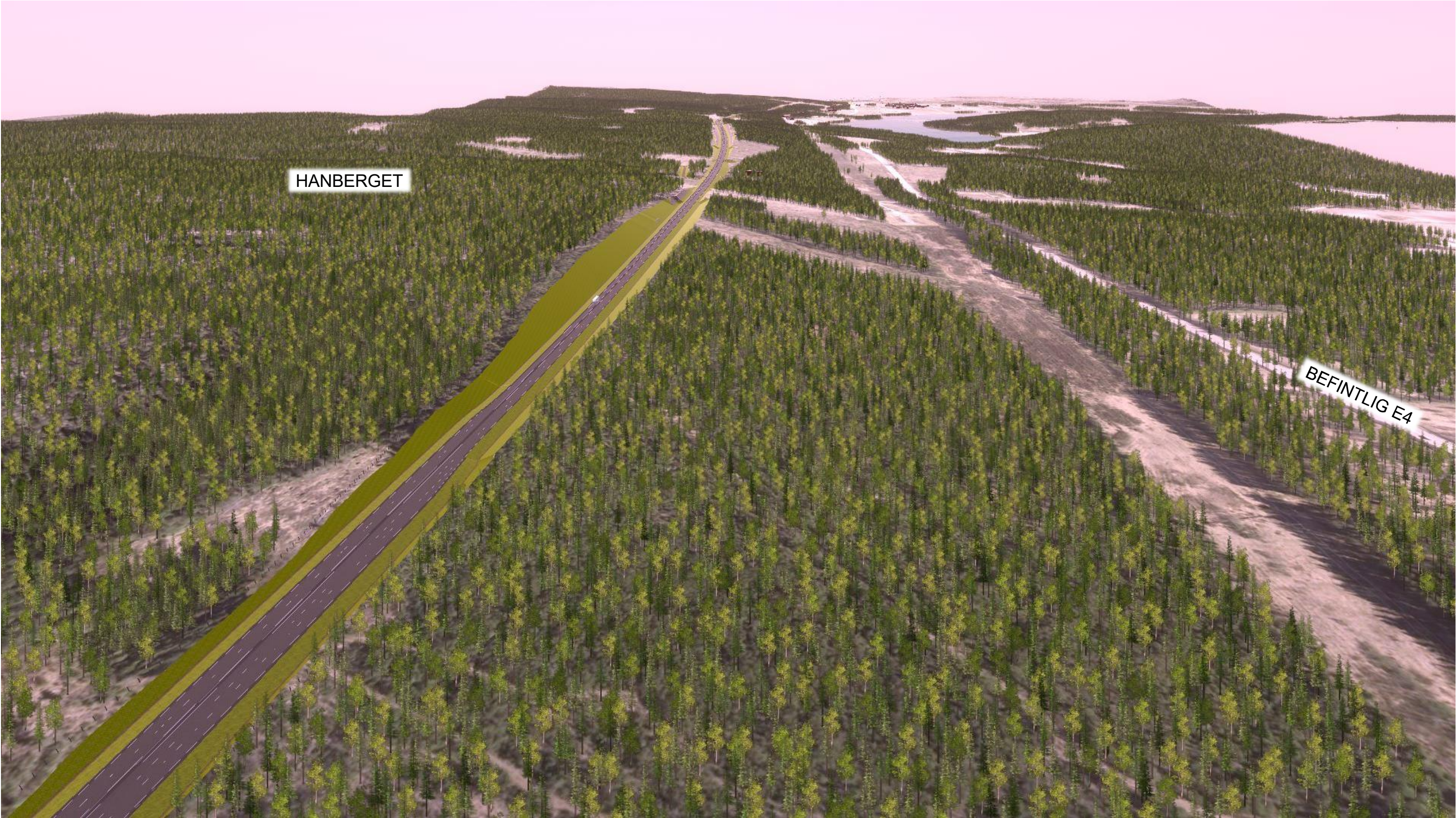
Sekt 12/500-13/000, Trafikplats Jättendal. Bergsjövägen mot öster

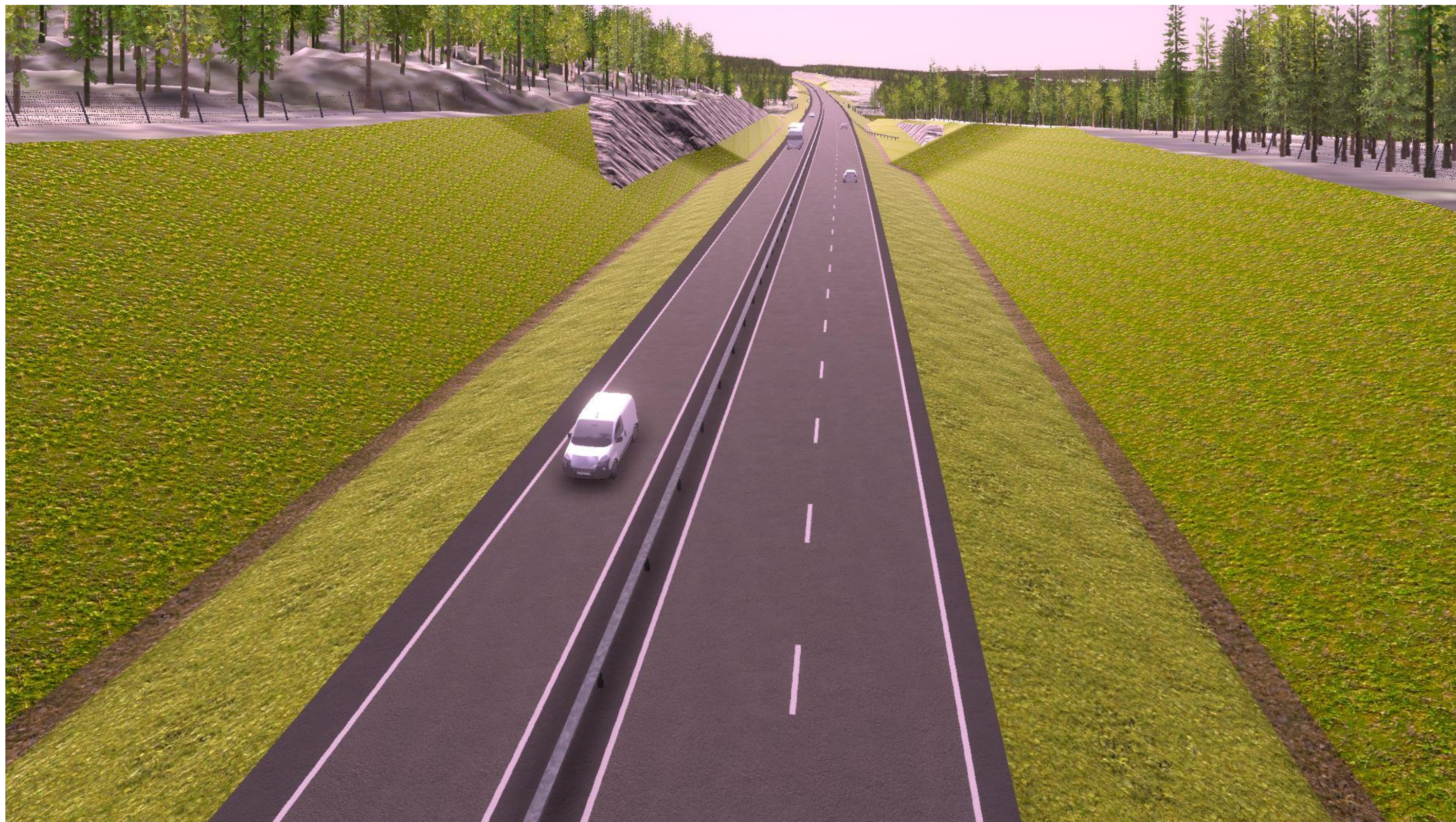


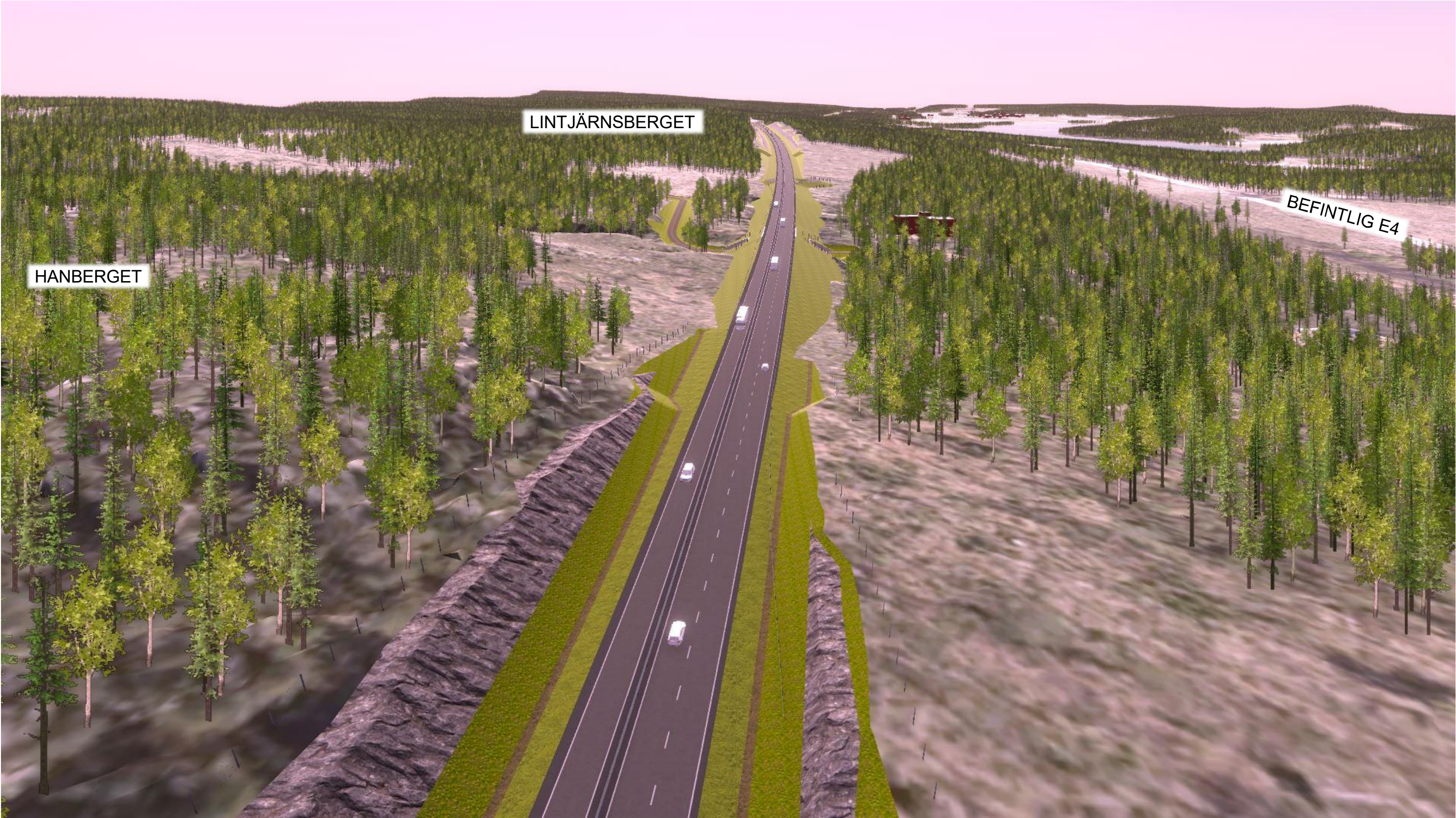
Sekt 12/500-13/000, Trafikplats Jättendal mot norr

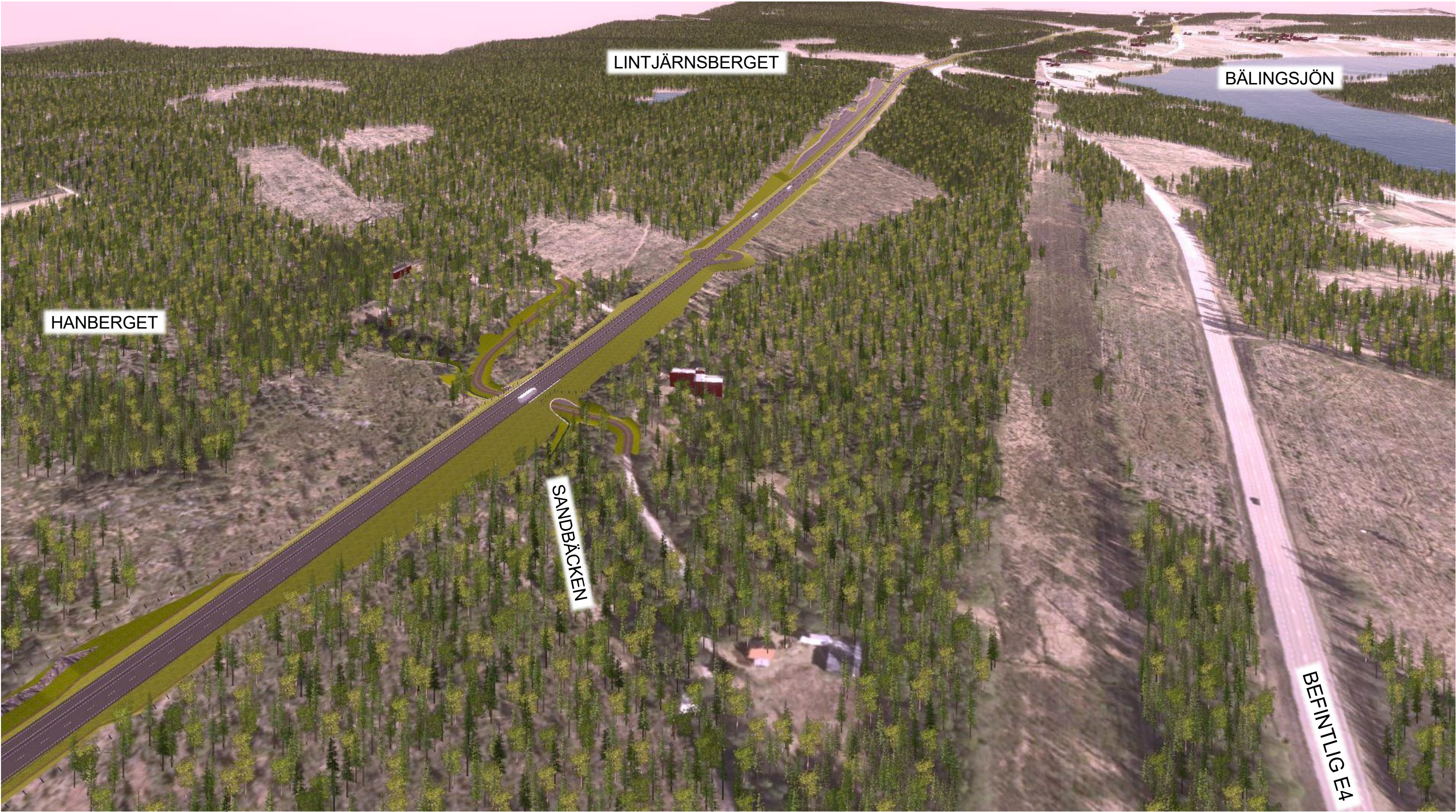


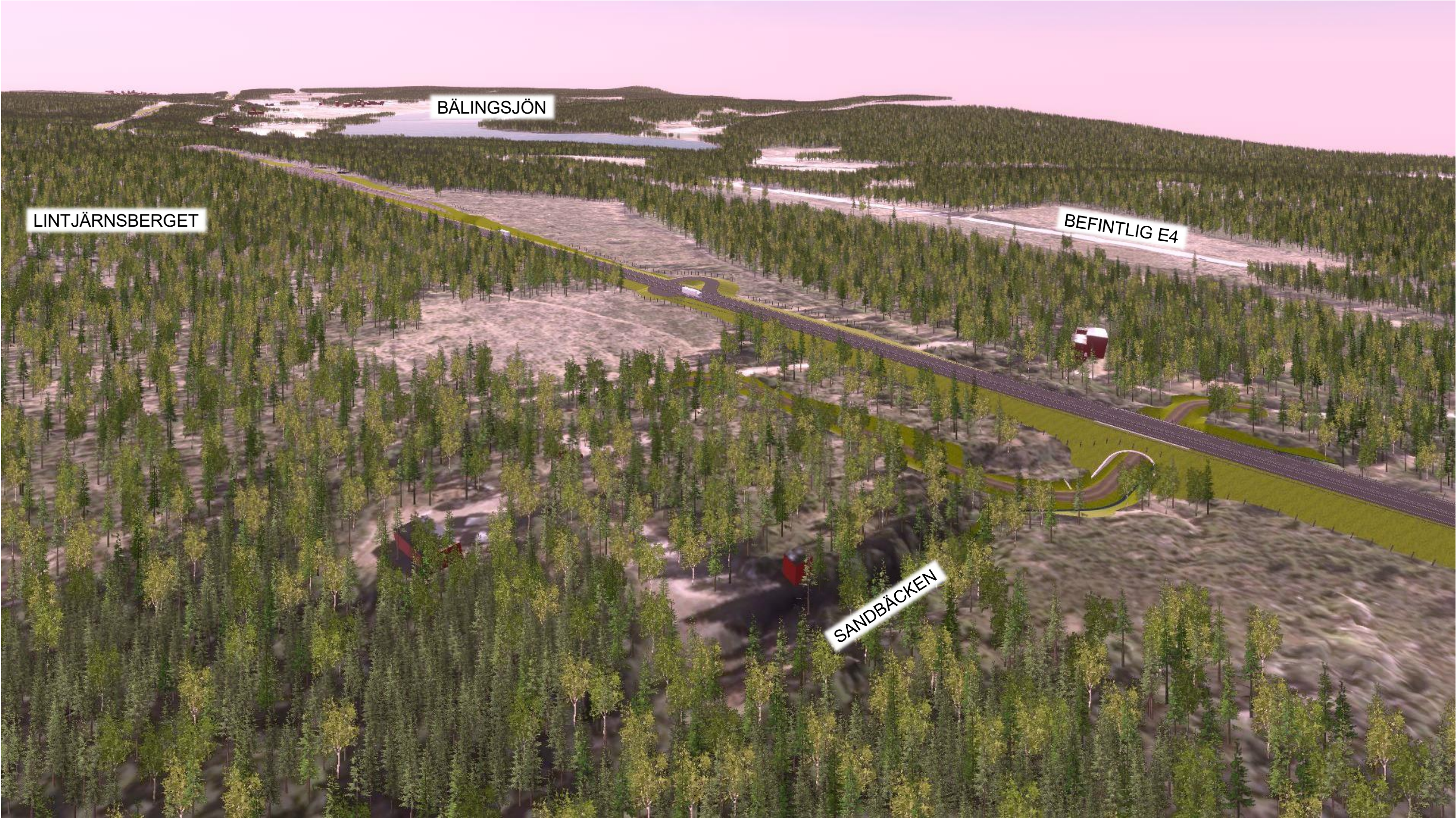


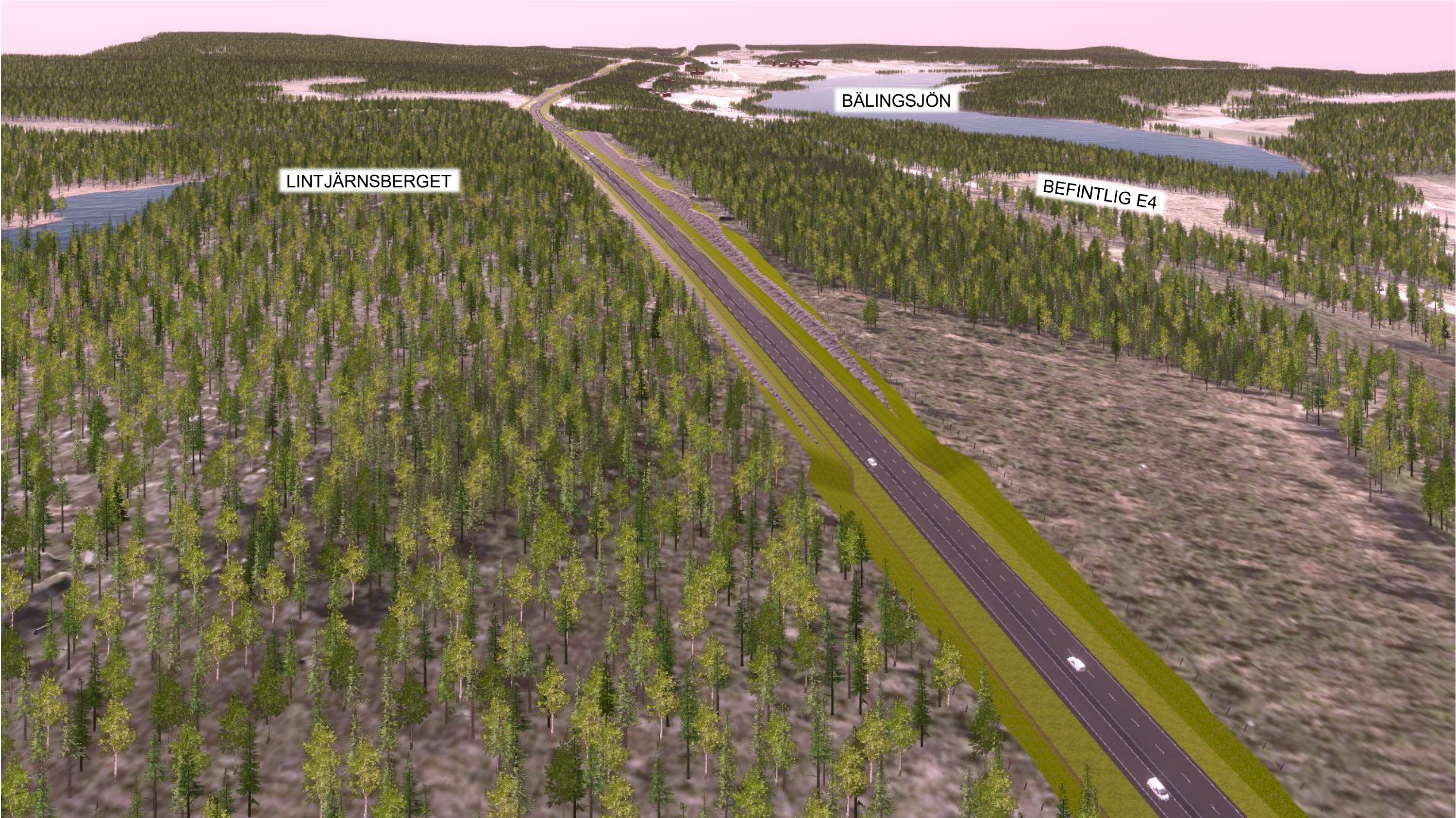






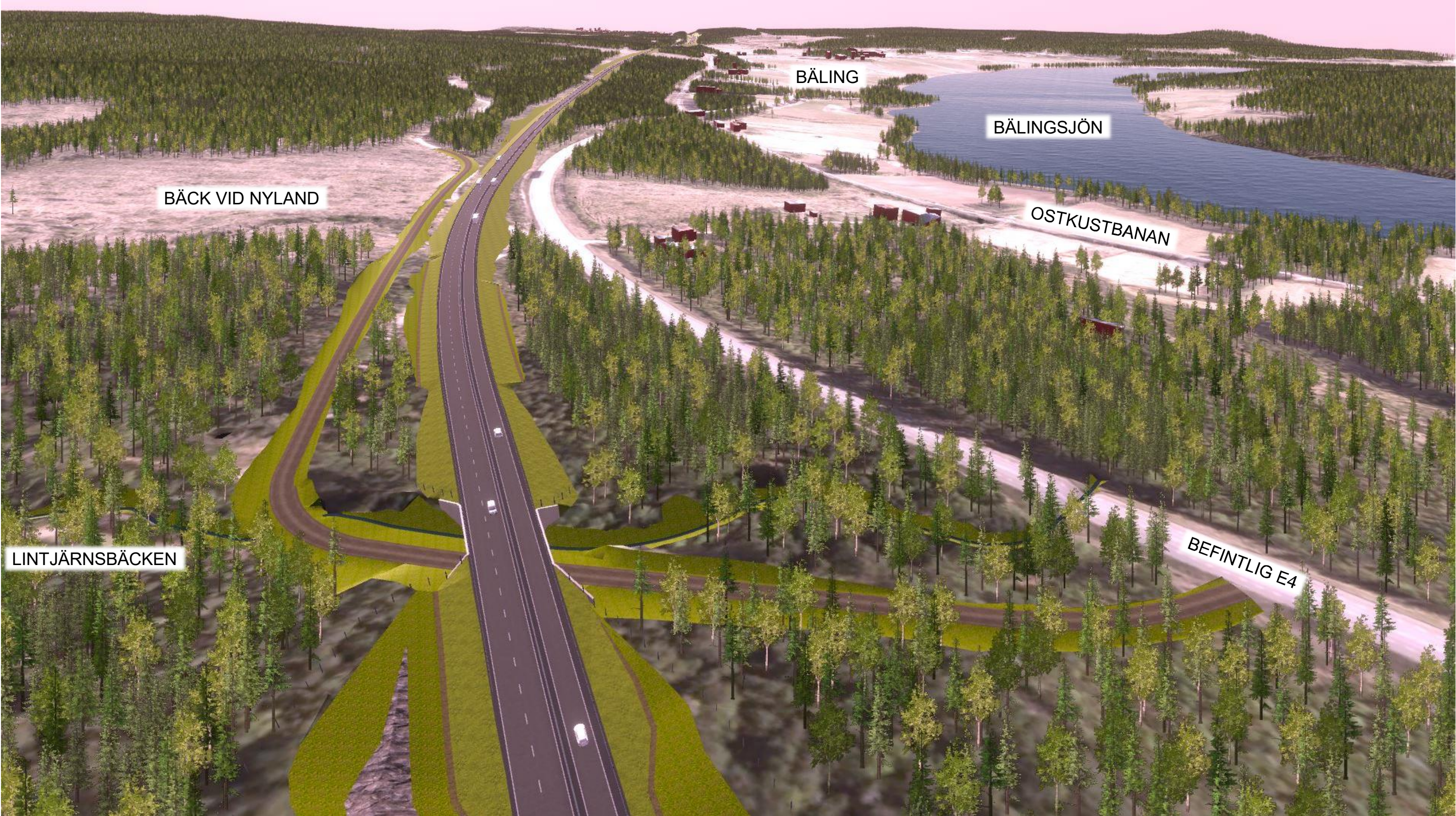






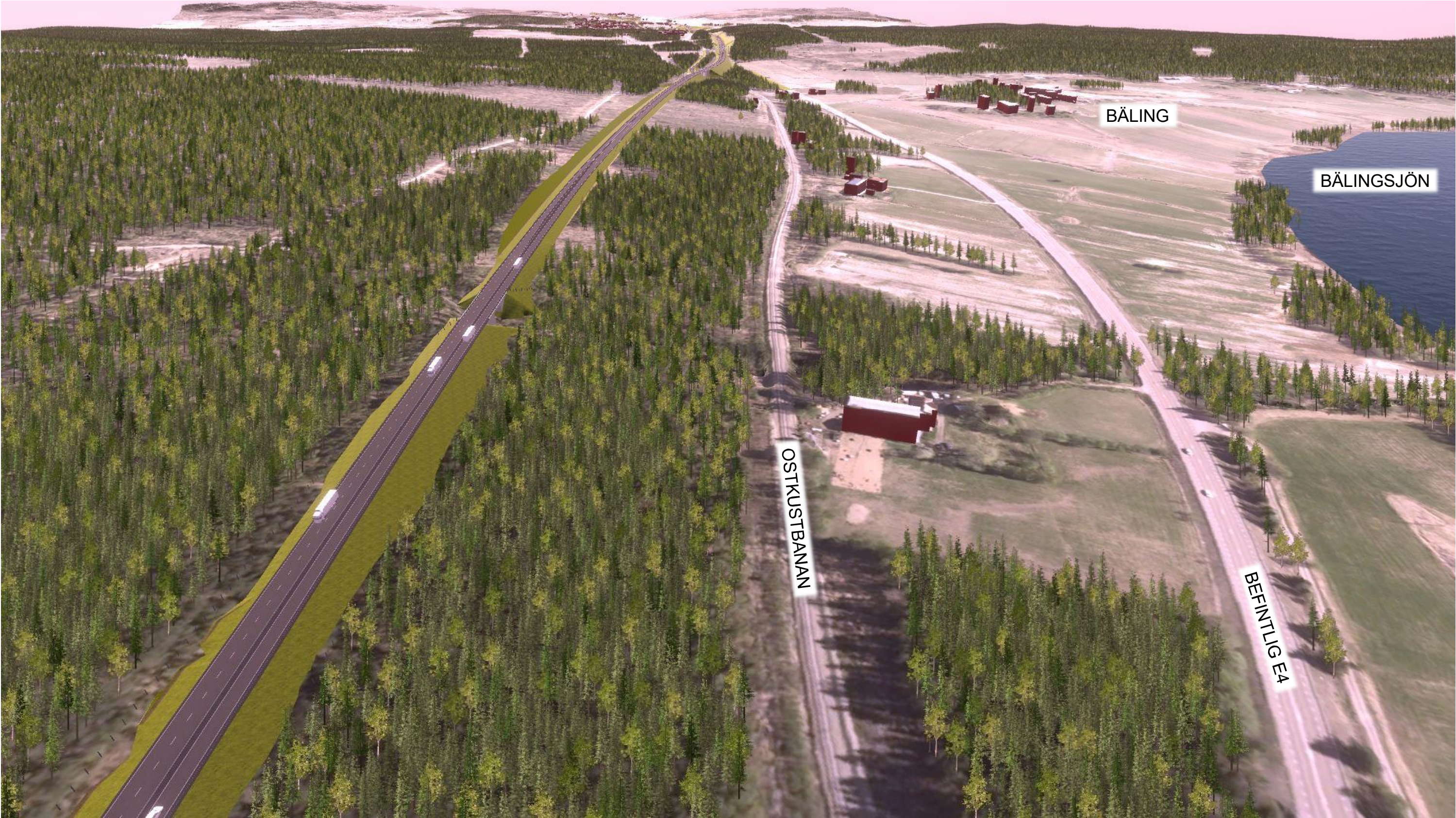




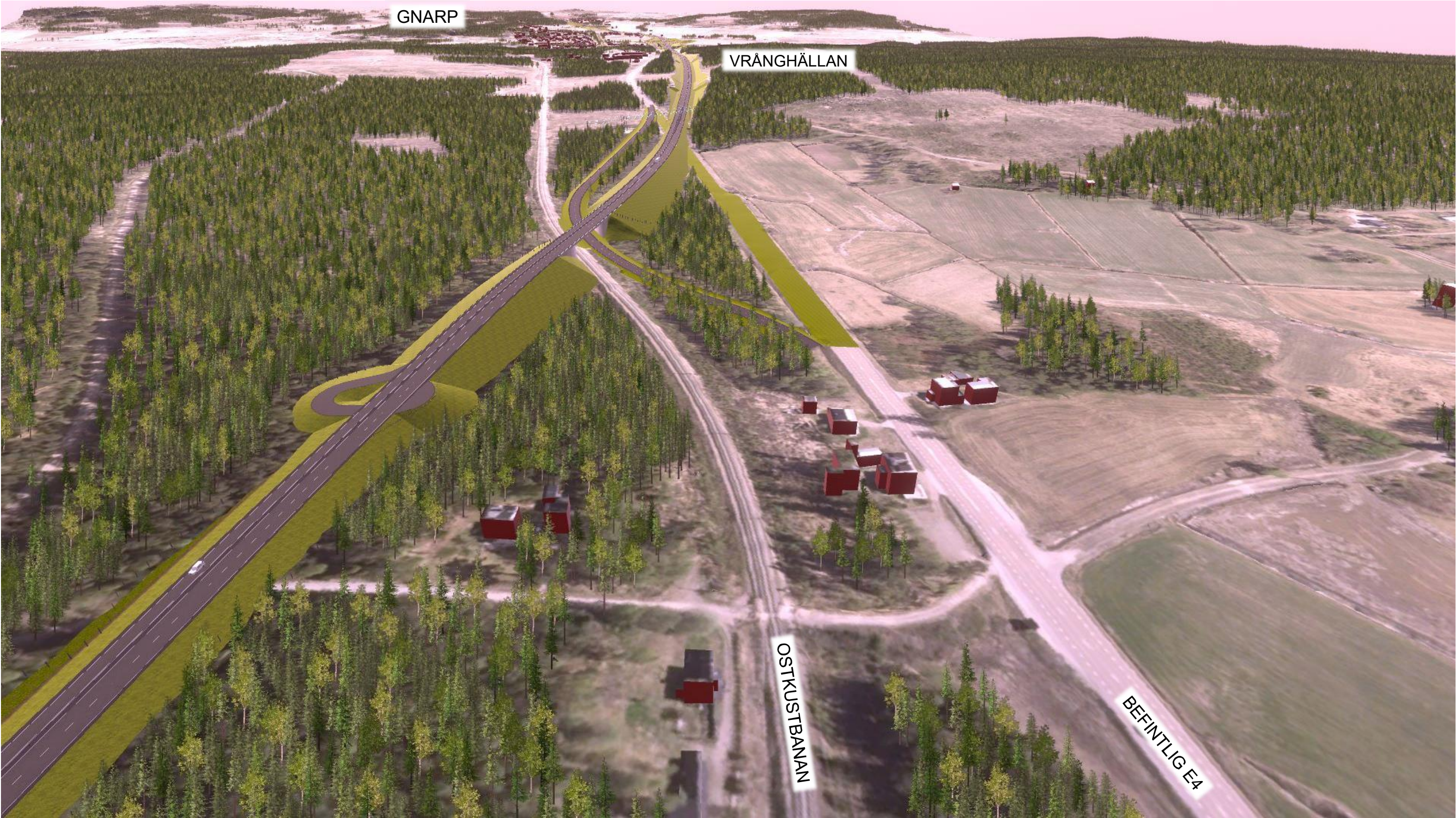




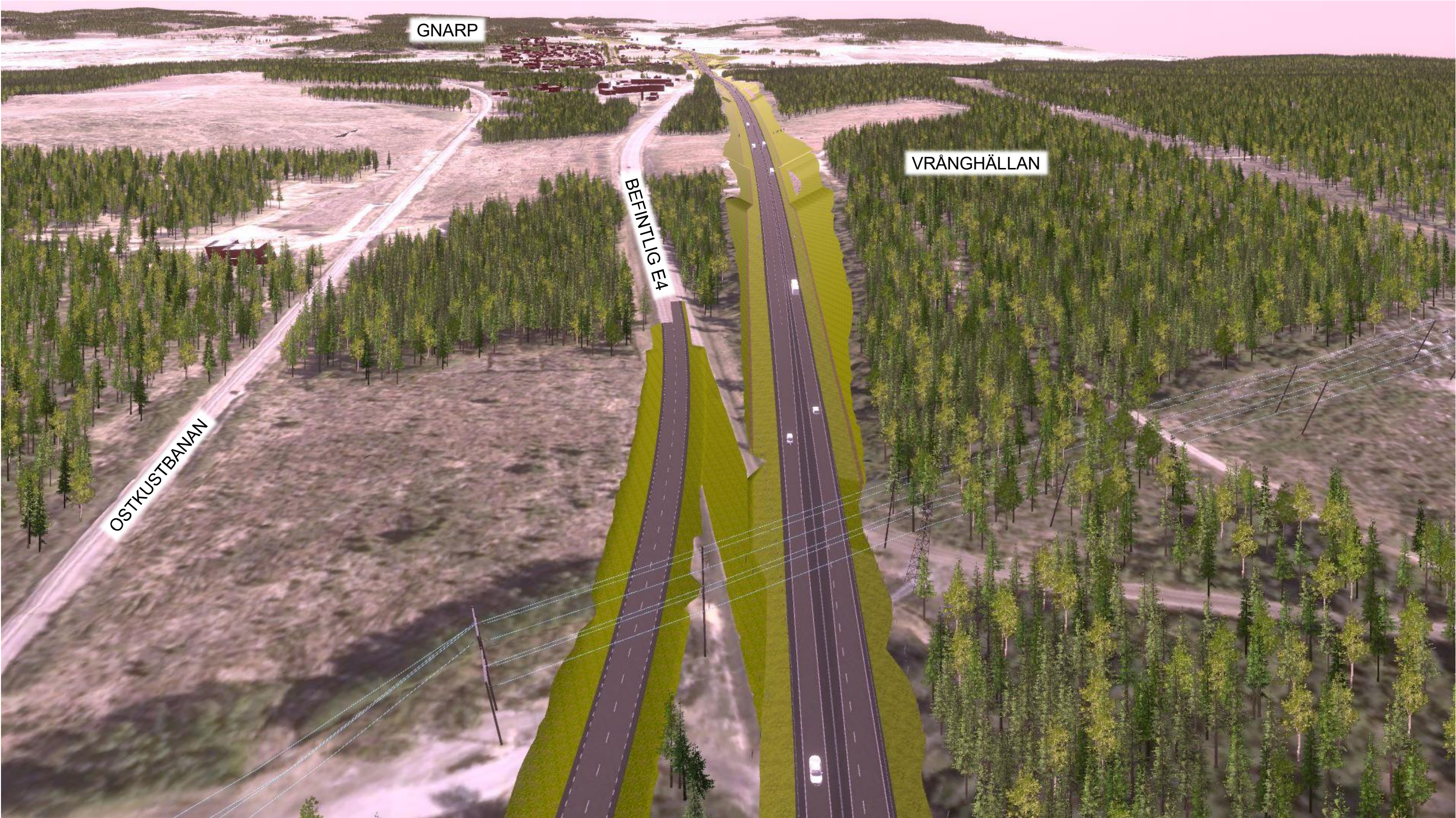
Sekt 17/500-18/000

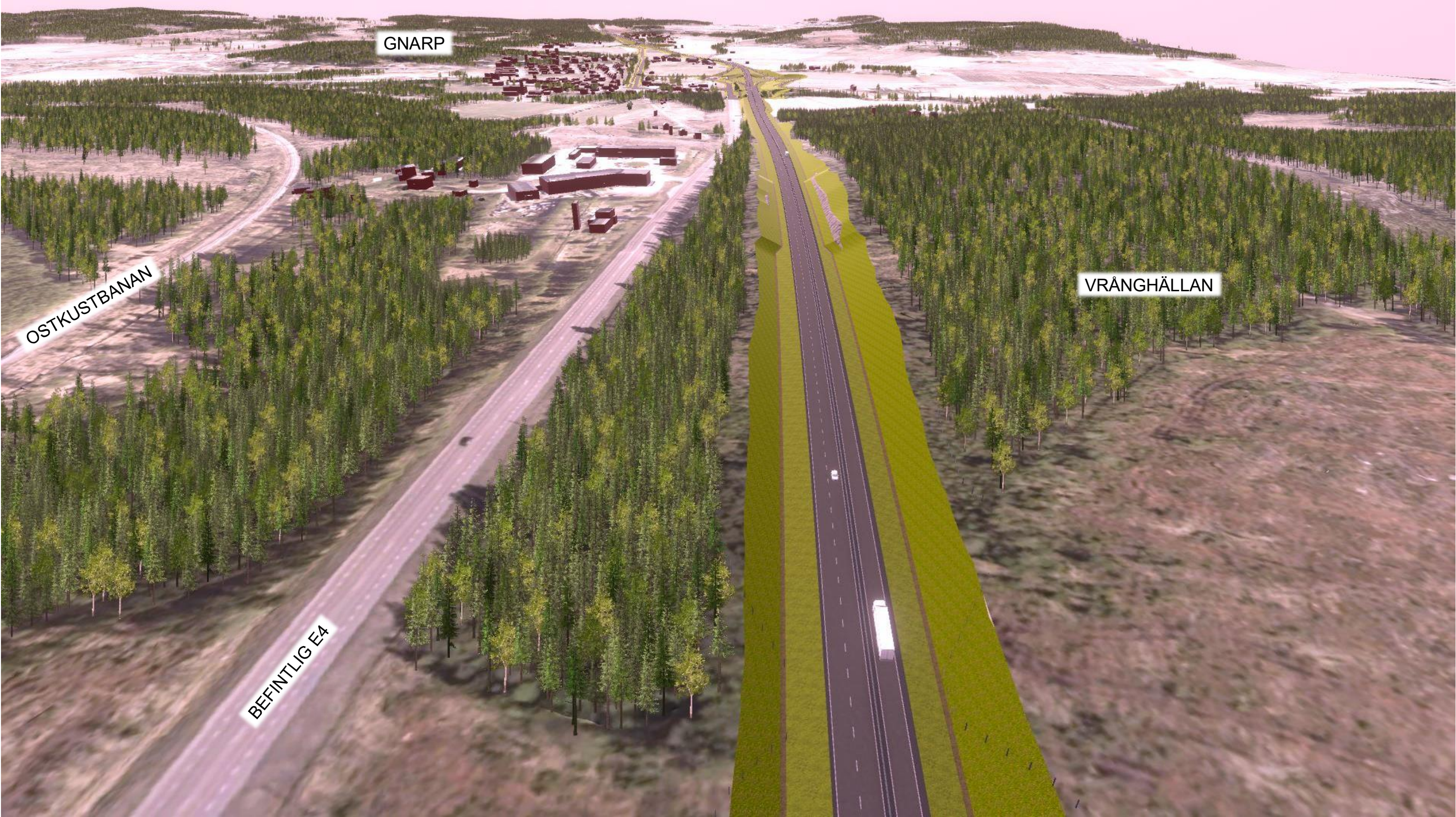


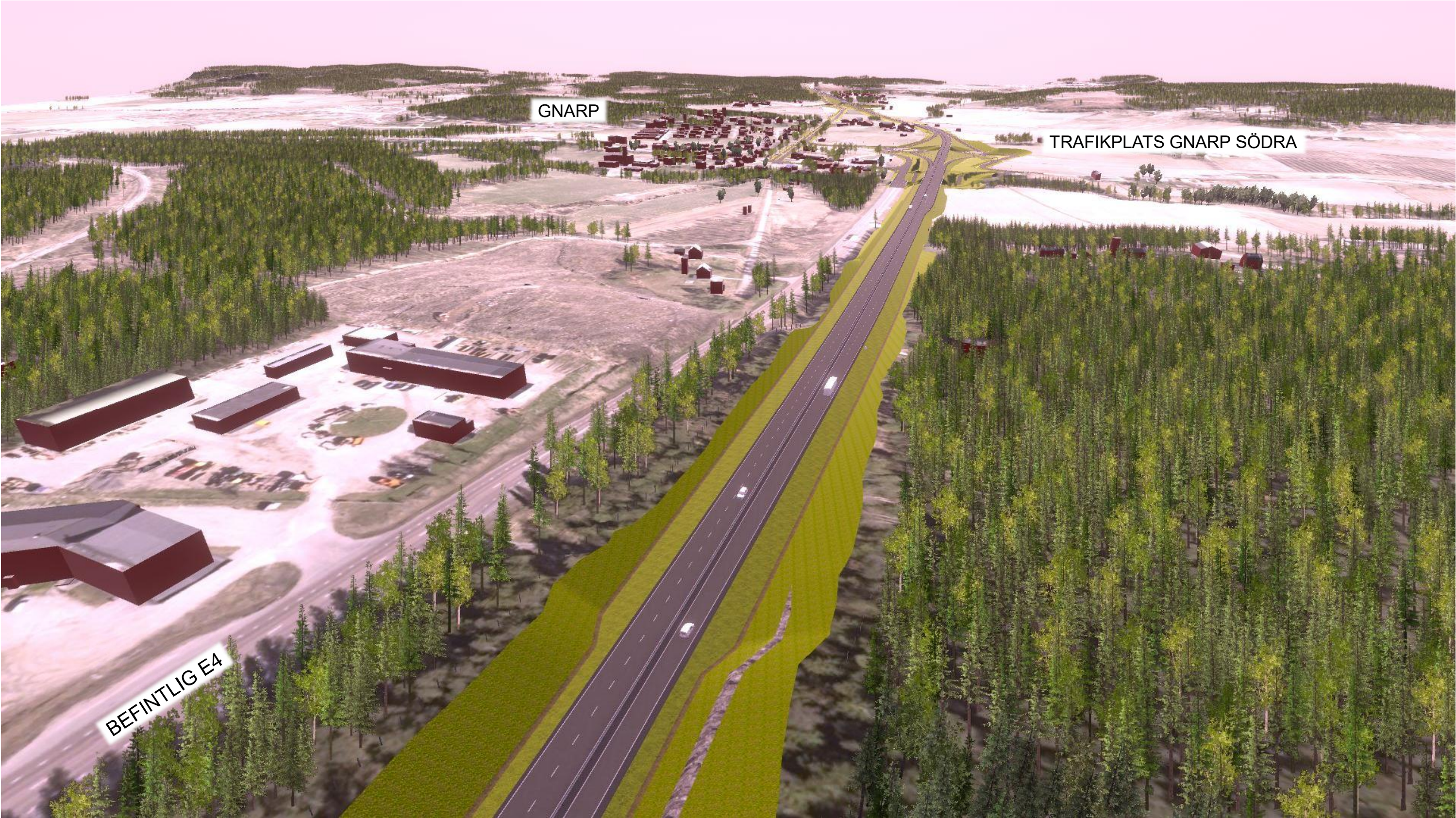
Sekt 18/000-18/500









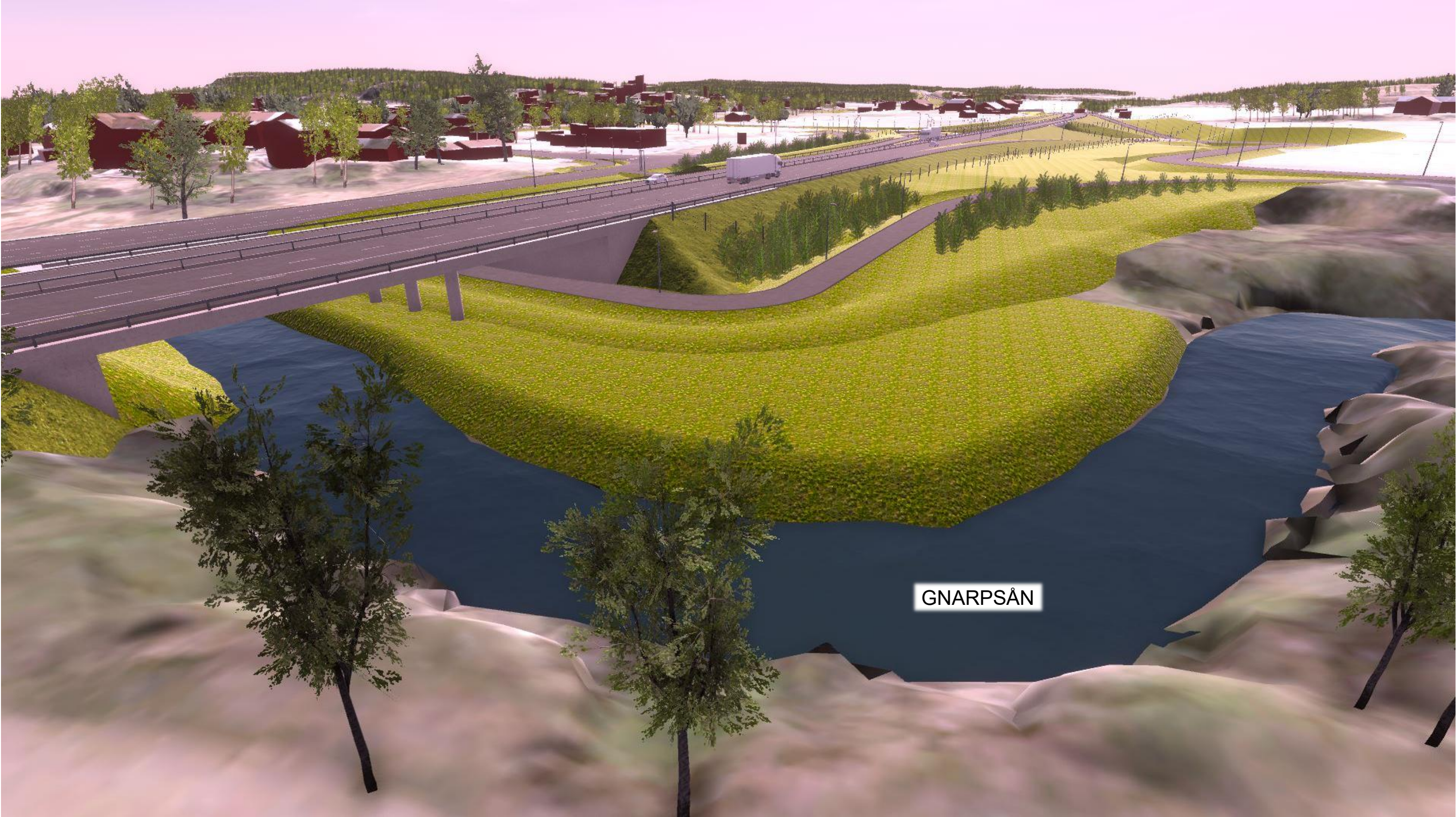




Sekt 20/500-21/000, Befintlig bro för befintlig E4 över Gnarpån



Sekt 20/500-21/000, Ny bro för ny E4 över Gnarpsån

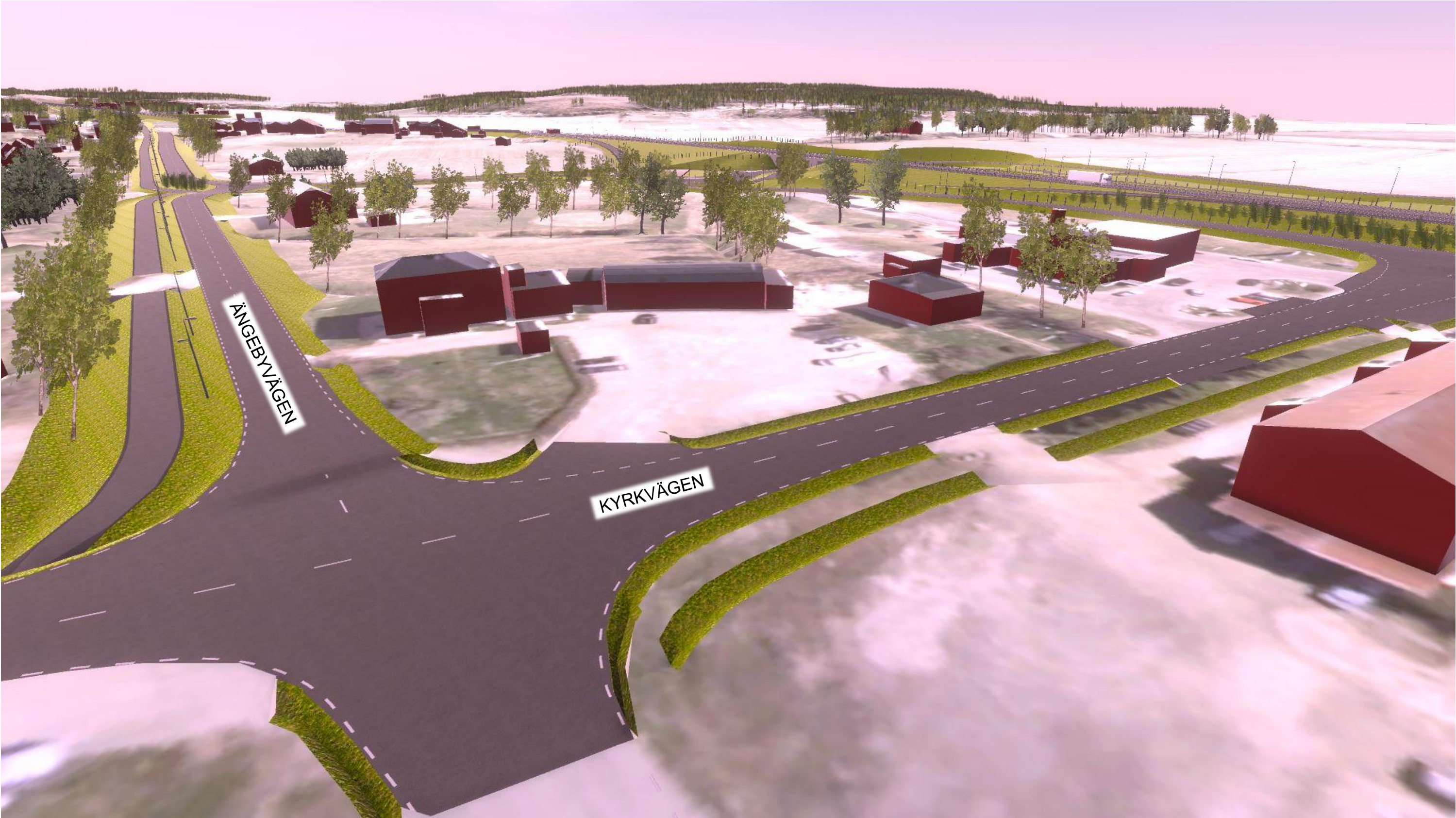


GNARPSÅN

Sekt 20/500-21/000, Trafikplats Gnarp södra mot väst



Sekt 20/500-21/000, Kyrkvägen och Ängebyvägen



Sekt 20/500-21/000, Trafikplats Gnarp södra mot öst. Anslutningsväg mellan trafikplats och Ängebyvägen



Sekt 21/000-21/500, Trafikplats Gnarp södra mot norr.

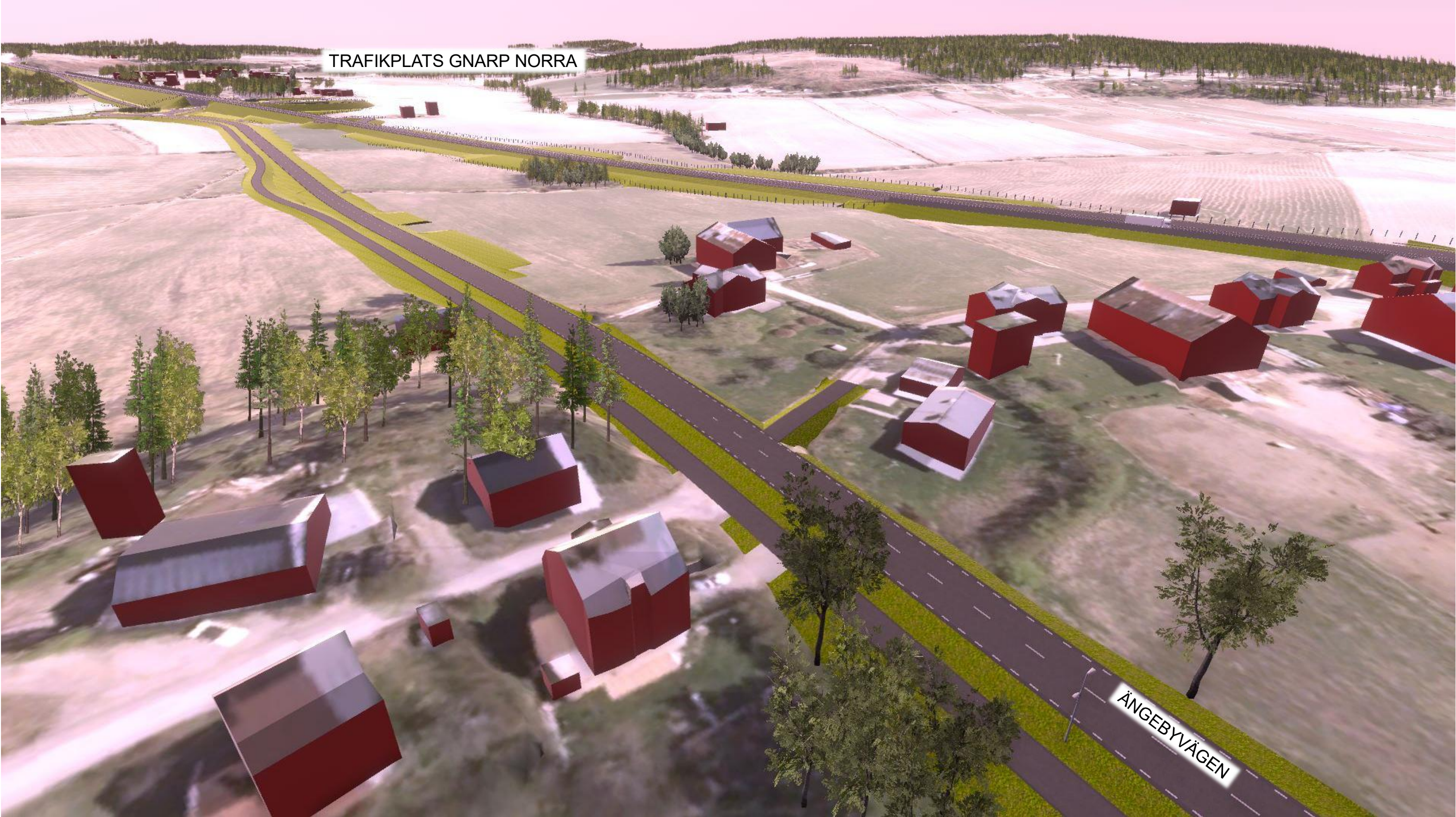


TRAFIKPLATS GNARP SÖDRA

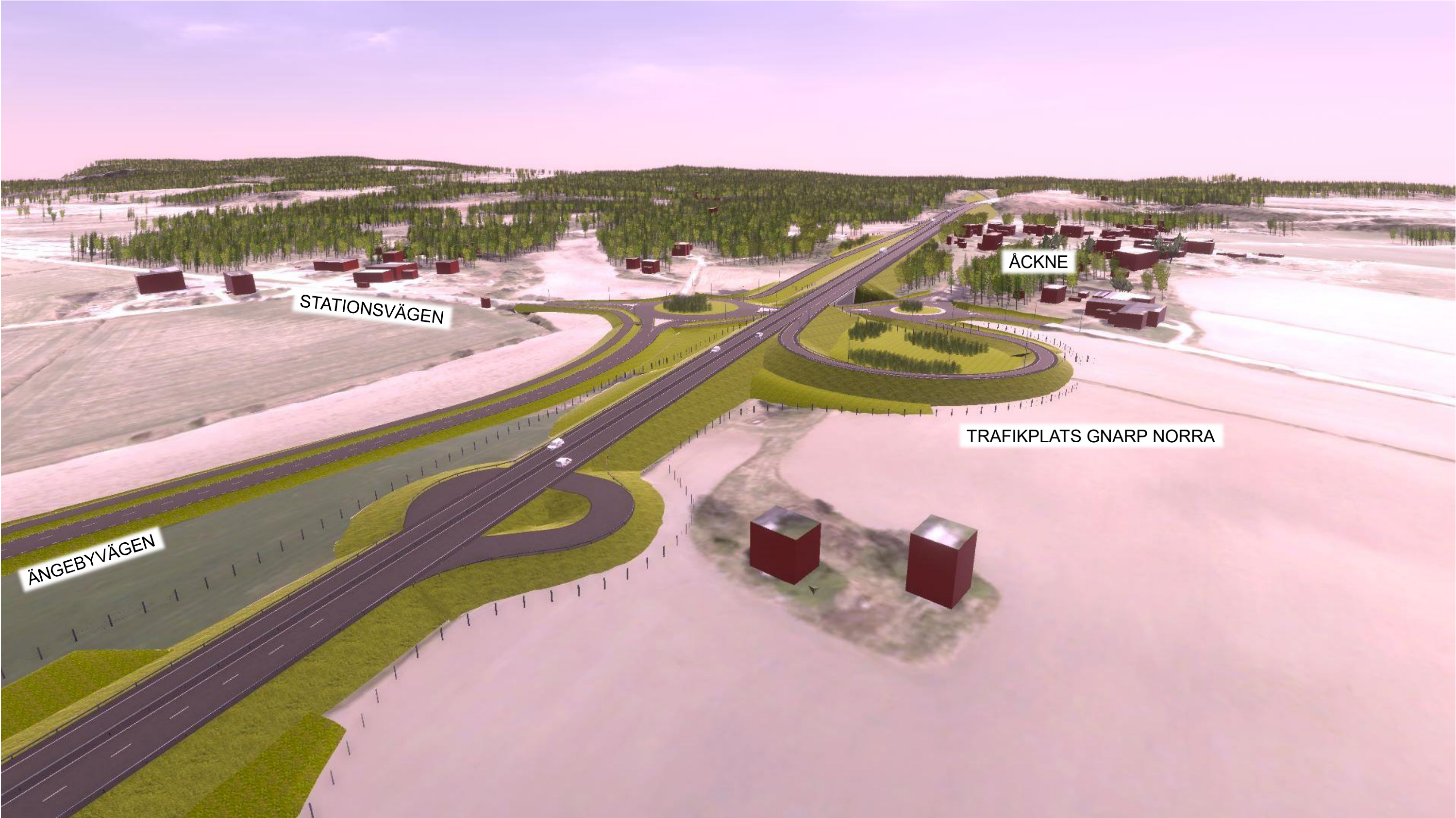




Sekt 21/500-22/000, Ängebyvägen







Sekt 22/000-22/500, Trafikplats Gnarp norra mot öst



