



LtCol Per-Ove Norell
SWE Armed Forces HQ

Director of Transport Services
Liasion officer to the National Traffic Administration

The Arctic and the High North are rapidly increasing in strategic importance, both militarily, economically and politically due to:

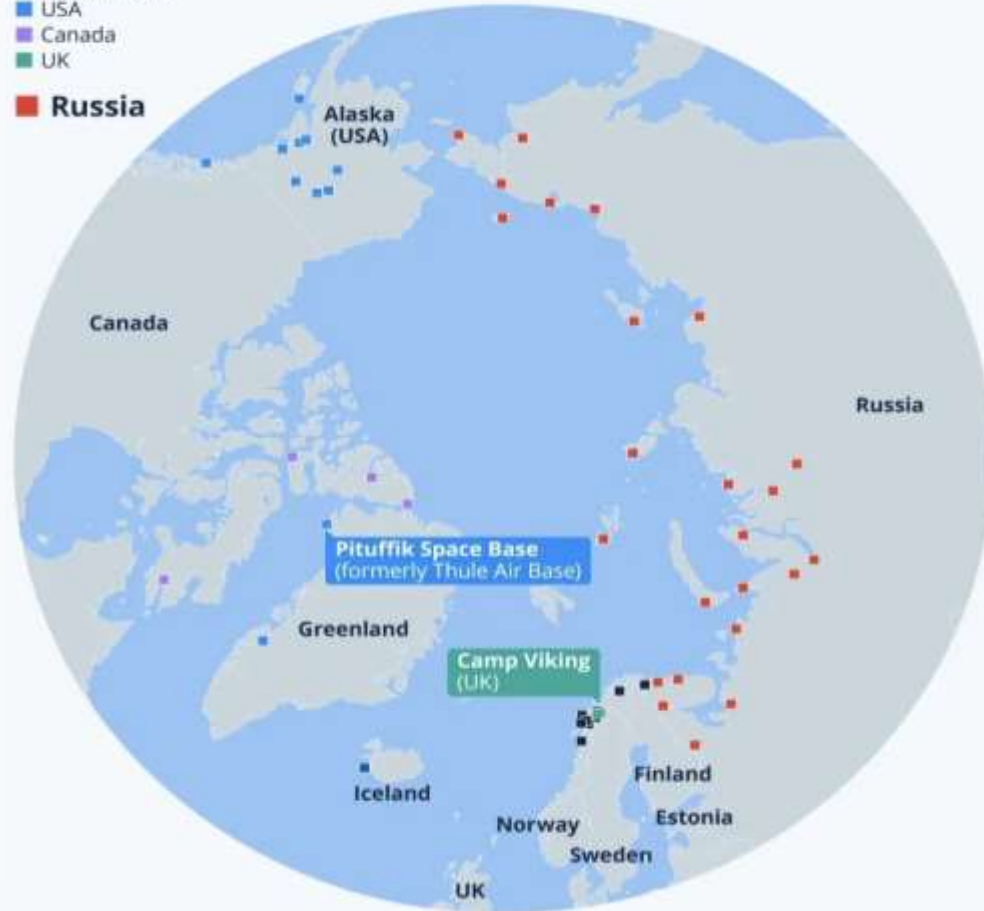
- Russia's **increased** military activity.
- Nato **expansion** (Finland + Sweden)
- Great **power rivalry** between Russia, the US and China-Tensions are **expected to continue to increase** for the foreseeable future.
- The **Northern Sea Route** (NSR) is becoming gradually strategically important.
- **Nato's SLOC** in the North Atlantic and the Norwegian Sea is becoming increasingly important for European supply.
- The Arctic contains **significant natural resources** (gas, oil, minerals, rare earth metals). Shipping routes and energy infrastructure are becoming priority protection objects - but also potential targets.

■ Military bases in the Arctic belonging to NATO and Russia

NATO

- Norway
- Iceland, USA
- USA
- Canada
- UK

Russia



Russia considers the Arctic to be one of its most important strategic areas, especially for:

- ❑ Nuclear deterrence
- ❑ Second-strike capability (Submarines on the Kola Peninsula)
- ❑ Protection of the Northern Fleet and bastion defense

Concrete Russian measures:

- ❑ Massive rearmament of the Kola Peninsula
- ❑ Modernization of bases, airfields, radar and air defense
- ❑ Increased submarine and surface combat operations in the Barents Sea and the Arctic Ocean
- ❑ Expanded military infrastructure along the Northern Sea Route

➔ MUST assesses that Russia's military presence in the Arctic is now greater than during the Cold War.



- ✓ Russia's strategic nuclear weapons base on the Kola Peninsula makes the area extremely sensitive
- ✓ The Arctic is central to the global nuclear balance, making the region both stabilizing and destabilizing:

--Stabilizing → High level of deterrence

--Destabilizing → High risk of confrontation

MUST assesses that the High North and the Arctic are developing into one of Europe's most strategically sensitive areas, where deterrence, military presence, surveillance and cooperation within Nato are crucial for stability.

Nato lifeline

USA → Europa → the Baltics → High North/Arctic

Energy → Military reinforcement/Military sustainment



- Ukraine's drone attacks have forced Russia to rebase a large part of its strategic bomber fleet to the Kola Peninsula in order to reduce losses.
- The Northern Navy is responsible for the defense of the Arctic, and Russia is expected to continue the development of military infrastructure there, such as air and military bases as well as radar stations and coastal defense facilities.
- Russia currently has about 40 icebreakers operational, and will likely receive a couple more modern ones within a year, while older ones are being phased out.
- Russia currently has the world's largest icebreaker fleet.



SOURCES: The Heritage Foundation, TASS, Sputnik News, RT, USNI News, The Moscow Times, Associated Air Charter, Barents Observer, Council on Foreign Relations, The Economist.

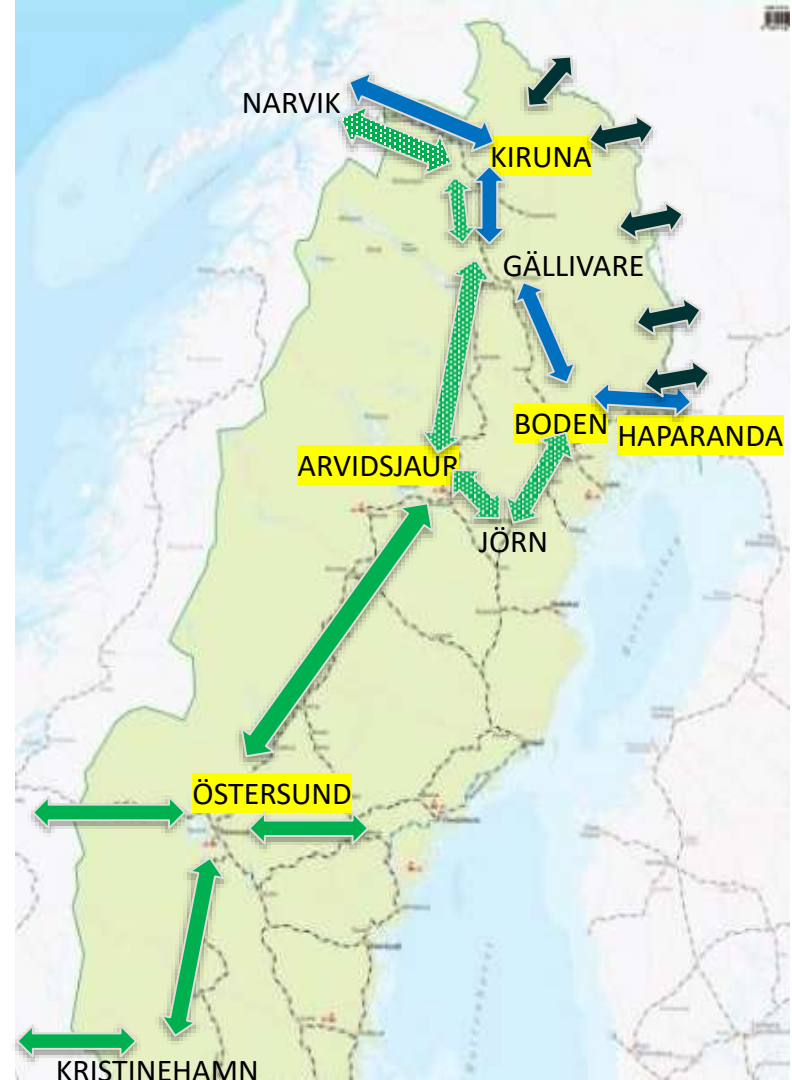
Filmtajm

Military railway transport during Cold Response Jan/Feb 2026

- Very cold-average day temperature -16°C (3°F), night temperature during transports between -30°C (-22°F) and -35°C (-31°F).
- Very difficult with train heating (tågvärme). The heating in the personnel coach broke down due to extrem cold -33°C (-26°F) at night in Arvidsjaur in January. The soldiers where literally packed in the drivers' cab to find heat and survive.
- Things/stuff wear down more and brakes easier with very cold wheater-below -20°C (-4°F)
- A lot of problems occured but commendable Ad Hoc solutions to encountered problems by Green Cargo & Inlandståg/Inlandsbanan
- The Railway operators must, to a greater extent, again dare to and learn how to operate trains in very cold wheater -deterrence demands it. However, it requires diesel-powered onboard generators for train heating. A national and strategic resource shortage where both expertize and equipment must be arranged immediately.

High North and deterrence

- High North (North parts of Norway, Sweden and Finland is part of a much larger context, mainly military strategic and affected by the fight/rivalry for natural resources (Russia & China)
- The Russian regime do not follow the logic, morality or thought pattern of "Westerners".
- Limited infrastructure- struggle over space in the transport system.
- Military mobility is a basic requirement that must be ensured!
- We (**ALL**) must start thinking total defence/comprehensive approach (TF) in everyday life and include our neighbouring countries. Our time for war preparations is now-not tomorrow.
- But we are not alone! We are #Nato supported by #EU
- ÖB och GD Trafikverket has the intention to form av TF common financing analyst group for the intention of applying means from NSIP and CEF.
- **Deterrence can be many things but is always our last option before military confrontation- that's why it's so important!**



Thank You!

