

Snabbreferens för inställning av modem i JZU840

Quick Reference Modem settings within object controller system JZU840

Abstract

Följande tre typer av modem används i utdelssystemet JZU840. Inställningsmöjligheterna för dessa modem beskrivs i detta dokument.

There are three types of modems used with JZU840. In this document the modem settings are described.

- ROF137 5271/1
- 3NSS003154-01
- 3NSS003154-03 (-04)

| Information reference | Date | Document number | Version | Status | Page |
|-----------------------|------------|-----------------|---------|----------|-------|
| TSBC/J. Söderlund | 2019-11-05 | 1DOC-1001407 | 2.2 | Released | 1 (9) |

File name: Modem Instruction_2.2.docx

This document and its contents are the property of Bombardier Inc. or its subsidiaries. This document contains confidential proprietary information. The reproduction, distribution, utilization or the communication of this document or any part thereof, without express authorisation is strictly prohibited. Offenders will be held liable for the payment of damages.

© 2019, Bombardier Inc. or its subsidiaries. All rights reserved.

Innehållsförteckning - *Table of contents*

| | |
|---|----------|
| Innehållsförteckning - <i>Table of contents</i> | 2 |
| 1. Förutsättningar - <i>Prerequisites</i> | 3 |
| 2. Inställningar - <i>Settings ROF137 5271/1</i> | 3 |
| 2.1 Linjekabel - <i>line cable</i> | 3 |
| 2.2 ”Kort” resp. ”lång” kabel – ” <i>Short</i> ” resp. ” <i>long</i> ” kabel..... | 4 |
| 2.3 PCM-interface (<i>only used in Sweden</i>)..... | 5 |
| 3. Inställningar - <i>Settings 3NSS003154-01</i> | 5 |
| 3.1 Linjekabel - <i>Line cable</i> | 5 |
| 3.2 PCM-interface (<i>only used in Sweden</i>)..... | 6 |
| 4. Inställningar - <i>Settings 3NSS003154-03 (-04)</i> | 7 |
| 4.1 Linjekabel - <i>Line cable</i> | 7 |
| 4.2 PCM-interface (<i>only used in Sweden</i>)..... | 8 |
| Version History | 9 |

| Information reference | Date | Document number | Version | Status | Page |
|-----------------------|------------|-----------------|---------|----------|-------|
| TSBC/J. Söderlund | 2019-11-05 | 1DOC-1001407 | 2.2 | Released | 2 (9) |

File name: Modem Instruction_2.2.docx

This document and its contents are the property of Bombardier Inc. or its subsidiaries. This document contains confidential proprietary information. The reproduction, distribution, utilization or the communication of this document or any part thereof, without express authorisation is strictly prohibited. Offenders will be held liable for the payment of damages.

© 2019, Bombardier Inc. or its subsidiaries. All rights reserved.

1. Förutsättningar - *Prerequisites*

Denna instruktion är giltig om kabelinstallation är utförd enligt *Tillämpningsinformation för koncentrator (KC)*, 15518-CNJ31107.

This instruction is valid if the installed cable is following the directions stated in 'Tillämpningsinformation för koncentrator (KC)', 15518-CNJ31107.

2. Inställningar - *Settings* ROF137 5271/1



2.1 Linjekabel - *line cable*

1. DIP-switcharnas normalinställning ses på bilden nedan.

| | B | |
|-----|----------|----|
| OFF | | ON |
| | 1 | |
| | 2 | |
| | 3 | |
| | 4 | |

| | A | |
|-----|----------|----|
| OFF | | ON |
| | 1 | |
| | 2 | |
| | 3 | |
| | 4 | |

2. Anslut linjekabeln (handsken) till kortet. LED på fronten ska lysa stadigt om signal finns och är tillräckligt bra.
3. Normalt behöver inställningen inte ändras med långa kablar kan switch A1 behöva sättas till "ON". Se tabellen i kapitel 2.2 för

| Information reference | Date | Document number | Version | Status | Page |
|-----------------------|------------|-----------------|---------|----------|-------|
| TSBC/J. Söderlund | 2019-11-05 | 1DOC-1001407 | 2.2 | Released | 3 (9) |

File name: Modem Instruction_2.2.docx

This document and its contents are the property of Bombardier Inc. or its subsidiaries. This document contains confidential proprietary information. The reproduction, distribution, utilization or the communication of this document or any part thereof, without express authorisation is strictly prohibited. Offenders will be held liable for the payment of damages.

© 2019, Bombardier Inc. or its subsidiaries. All rights reserved.

ungefärliga längder.

För ytterligare information se *Driftsättningsinstruktion för modem MDM 1537-ROF137 5271/1*.

1. *The default setting of the DIP-switches is according the figure below:*



2. *Connect the line to the modem (front connector) and the LED will be lit steady if the line is active and the signal quality is good enough.*
3. *Normally it is not necessary to adjust the settings but with long cables switch A1 can be set to ON. See chapter 2.2 for approx. length of cable.*

For more information see 'Driftsättningsinstruktion för modem MDM' 1537-ROF137 5271/1.

2.2 "Kort" resp. "lång" kabel – "Short" resp. "long" cable

Gränsen mellan "kort" och "lång" kabel är inte exakt. Många faktorer påverkar kvaliteten på datatransmissionen men som riktlinje kan nedstående tabell användas.

The definition of "short" or "long" cable is not exact. There are many factors that will influence the transmission quality. But as a benchmark the following table can be used:

| Tråddiameter - Wire diameter | "Kort kabel" - "Short cable" | "Lång kabel" - "Long cable" |
|---------------------------------|---------------------------------|--------------------------------|
| 0.6 mm | 0-6 km | 6-10 km |
| 0.9 mm | 0-12 km | 12-20 km |

| Information reference | Date | Document number | Version | Status | Page |
|-----------------------|------------|-----------------|---------|----------|-------|
| TSBC/J. Söderlund | 2019-11-05 | 1DOC-1001407 | 2.2 | Released | 4 (9) |

File name: Modem Instruction_2.2.docx

This document and its contents are the property of Bombardier Inc. or its subsidiaries. This document contains confidential proprietary information. The reproduction, distribution, utilization or the communication of this document or any part thereof, without express authorisation is strictly prohibited. Offenders will be held liable for the payment of damages.

© 2019, Bombardier Inc. or its subsidiaries. All rights reserved.

2.3 PCM-interface (*only used in Sweden*)

I de installationer där modemerna används i PCM-interfacerack (riktning mot APN-dator) skall "B"- switcharna ha följande inställning ("A" normalinst.):

B2 "OFF"

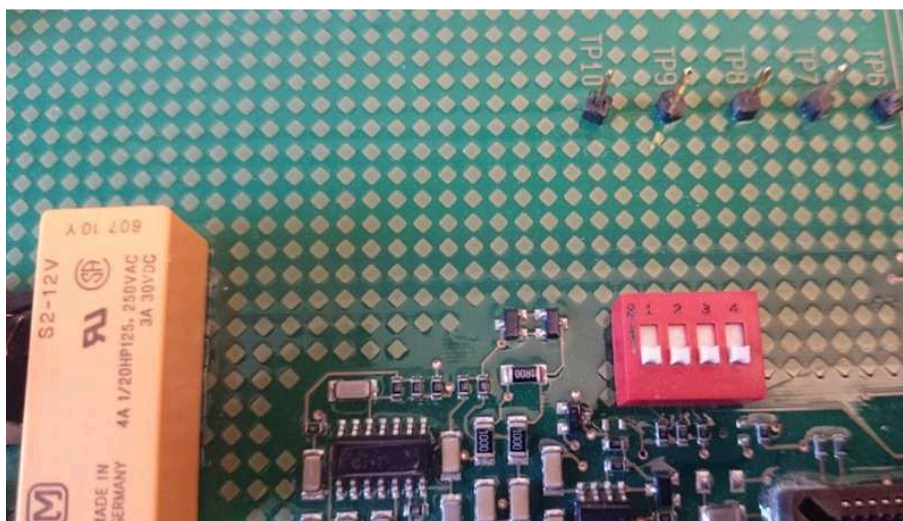
B1 "ON"

För ytterligare information se *Object Controller Transmission with PCM Interface* 15518-CNJ31109. I detta dokument kan även inställningarna aktuellt PLC-BANKort ses.

3. Inställningar - *Settings* 3NSS003154-01

OBS: Detta kort skall ej användas med CON-kort ROF137 3013/101!

Note: This modem shall not be used with CON board ROF137 3013/101!



3.1 Linjekabel - *Line cable*

1. Normalinställning SW1: samtliga "OFF".
2. Anslut linjekabeln (handsken) till kortet. LED högst upp på fronten ska lysa stadigt om signal finns och är tillräckligt bra.
3. Normalt behöver inställningen inte ändras men om datatransmissionen är ostabil kan SW1:1 sättas till "ON".

| Information reference | Date | Document number | Version | Status | Page |
|-----------------------|------------|-----------------|---------|----------|-------|
| TSBC/J. Söderlund | 2019-11-05 | 1DOC-1001407 | 2.2 | Released | 5 (9) |

File name: Modem Instruction_2.2.docx

This document and its contents are the property of Bombardier Inc. or its subsidiaries. This document contains confidential proprietary information. The reproduction, distribution, utilization or the communication of this document or any part thereof, without express authorisation is strictly prohibited. Offenders will be held liable for the payment of damages.

© 2019, Bombardier Inc. or its subsidiaries. All rights reserved.

För ytterligare information se *Användarmanual MDM*, 3NSS003154D0105

1. *Default setting of SW 1 is all OFF.*
2. *Connect the line to the modem (front connector) and the upper most LED will be lit steady if the line is active and the signal quality is good enough.*
3. *Normally it is not necessary to adjust the settings but SW1:1 can be set to ON if the signal/communication is unstable.*

For more information see 'User Manual MDM', 3NSS003154D0105

3.2 PCM-interface (*only used in Sweden*)

I de installationer där modemerna används i PCM-interfacerack (riktning mot APN-dator) skall SW1:3 sättas till "ON".

För ytterligare information se *Object Controller Transmission with PCM Interface* 15518-CNJ31109. I detta dokument kan även inställningarna aktuellt PLC-BAN-kort ses.

| Information reference | Date | Document number | Version | Status | Page |
|-----------------------|------------|-----------------|---------|----------|-------|
| TSBC/J. Söderlund | 2019-11-05 | 1DOC-1001407 | 2.2 | Released | 6 (9) |

File name: Modem Instruction_2.2.docx

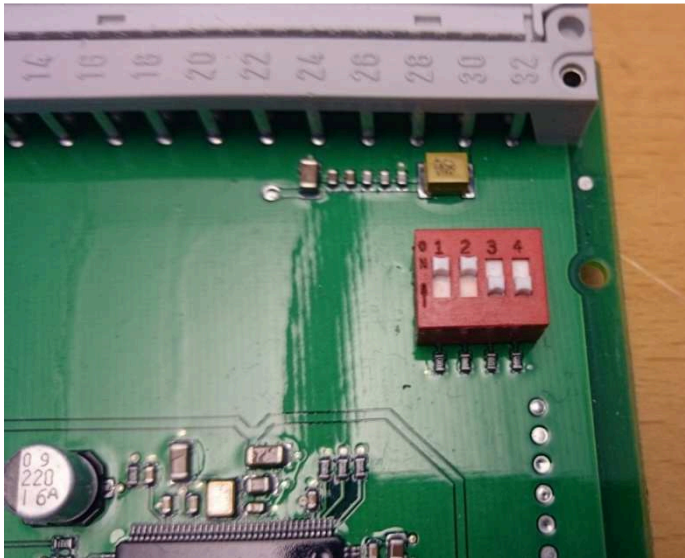
This document and its contents are the property of Bombardier Inc. or its subsidiaries. This document contains confidential proprietary information. The reproduction, distribution, utilization or the communication of this document or any part thereof, without express authorisation is strictly prohibited. Offenders will be held liable for the payment of damages.

© 2019, Bombardier Inc. or its subsidiaries. All rights reserved.

4. Inställningar - *Settings* 3NSS003154-03 (-04)

OBS: Detta kort skall ej användas med CON-kort ROF137 3013/101!

Note: This modem shall not be used with CON board ROF137 3013/101!



4.1 Linjekabel - *Line cable*

1. Normalinställning SW1:

SW1:1 ON
SW1:2 ON
SW1:3 OFF
SW1:4 OFF

2. Anslut linjekabeln (handsken) till kortet. LED längst till vänster på fronten ska lysa stadigt om signal finns och är tillräckligt bra.
3. Normalt behöver inställningen inte ändras men om datatransmissionen är ostabil kan SW1:1 sättas till "OFF".

För ytterligare information se *Användarmanual MDM3 och MDM4*, 3NSS003154D0307.

| Information reference | Date | Document number | Version | Status | Page |
|-----------------------|------------|-----------------|---------|----------|-------|
| TSBC/J. Söderlund | 2019-11-05 | 1DOC-1001407 | 2.2 | Released | 7 (9) |

File name: Modem Instruction_2.2.docx

This document and its contents are the property of Bombardier Inc. or its subsidiaries. This document contains confidential proprietary information. The reproduction, distribution, utilization or the communication of this document or any part thereof, without express authorisation is strictly prohibited. Offenders will be held liable for the payment of damages.

© 2019, Bombardier Inc. or its subsidiaries. All rights reserved.

1. *Make sure that the setting of SW 1 is:*

SW1:1 ON

SW1:2 ON

SW1:3 OFF

SW1:4 OFF

2. *Connect the line to the modem (front connector) and the left most LED will be lit steady if the line is active and the signal quality is good enough.*
3. *Normally it is not necessary to adjust the settings but SW1:1 can be set to OFF if the signal/communication is unstable.*

*For more information see 'User Manual MDM3 and MDM4',
3NSS003154D0307*

4.2 PCM-interface (*only used in Sweden*)

I de installationer där modemerna används i PCM-interfacerack (riktning mot APN-dator) skall SW1:3 sättas till "ON".

För ytterligare information se *Object Controller Transmission with PCM Interface 15518-CNJ31109*. I detta document kan även inställningarna aktuellt PLC-BANKort ses.

| Information reference | Date | Document number | Version | Status | Page |
|-----------------------|------------|-----------------|---------|----------|-------|
| TSBC/J. Söderlund | 2019-11-05 | 1DOC-1001407 | 2.2 | Released | 8 (9) |

File name: Modem Instruction_2.2.docx

This document and its contents are the property of Bombardier Inc. or its subsidiaries. This document contains confidential proprietary information. The reproduction, distribution, utilization or the communication of this document or any part thereof, without express authorisation is strictly prohibited. Offenders will be held liable for the payment of damages.

© 2019, Bombardier Inc. or its subsidiaries. All rights reserved.

Approval

Prepared by
Name signature:Verified by
Name signature:Approved by
Name signature:Name clarification:
Jan Söderlund
Role:
HW DesignerName clarification:
Hans Kjellegard
Role:
SW and System EngineerName clarification:
Benny Slotteborn
Role:
Product owner JZU840

Version History

| Version | Changes/Comment | Signature | Date |
|----------------|--|------------------|-------------|
| 1.0 | Created | Jan Söderlund | 2014-07-04 |
| 2.0 | SAM removed due to unclear product structure. | Jan Söderlund | 2014-09-22 |
| 2.1 | Swedish language added. | Jan Söderlund | 2014-11-04 |
| 2.2 | Chapter 2.2 added (new structure). Corrections in 2.1, switch setting. | Jan Söderlund | 2019-11-05 |

| Information reference | Date | Document number | Version | Status | Page |
|-----------------------|------------|-----------------|---------|----------|-------|
| TSBC/J. Söderlund | 2019-11-05 | 1DOC-1001407 | 2.2 | Released | 9 (9) |

File name: Modem Instruction_2.2.docx

This document and its contents are the property of Bombardier Inc. or its subsidiaries. This document contains confidential proprietary information. The reproduction, distribution, utilization or the communication of this document or any part thereof, without express authorisation is strictly prohibited. Offenders will be held liable for the payment of damages.

© 2019, Bombardier Inc. or its subsidiaries. All rights reserved.